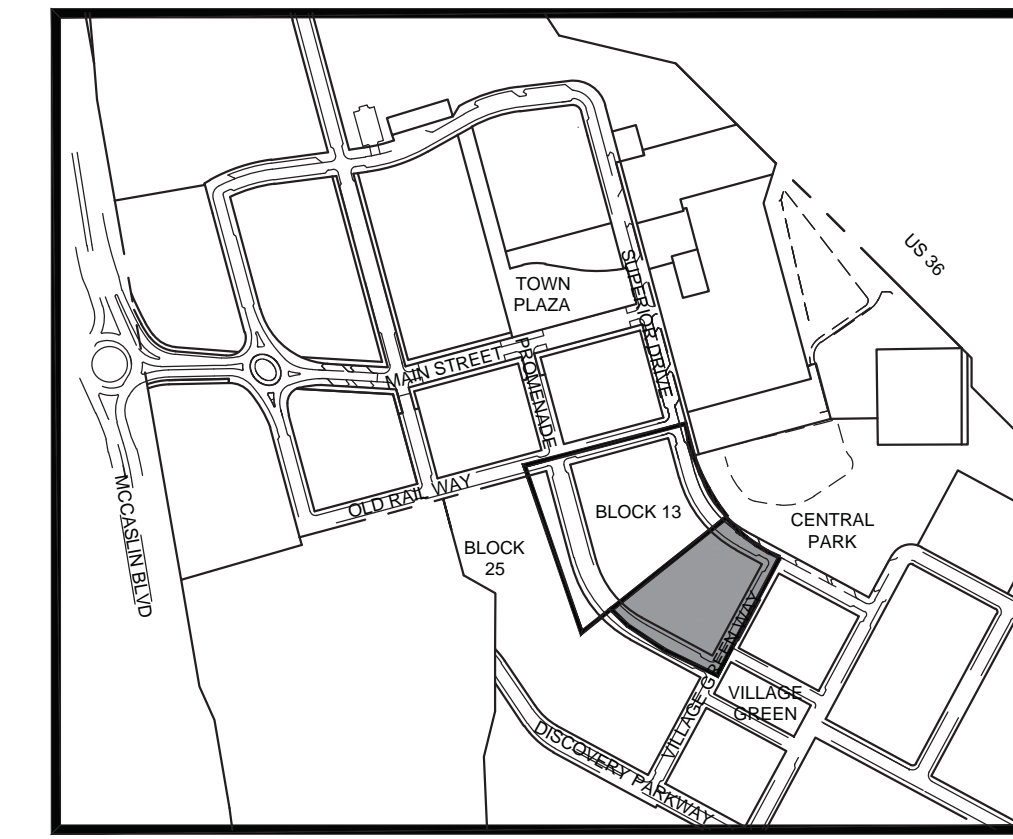
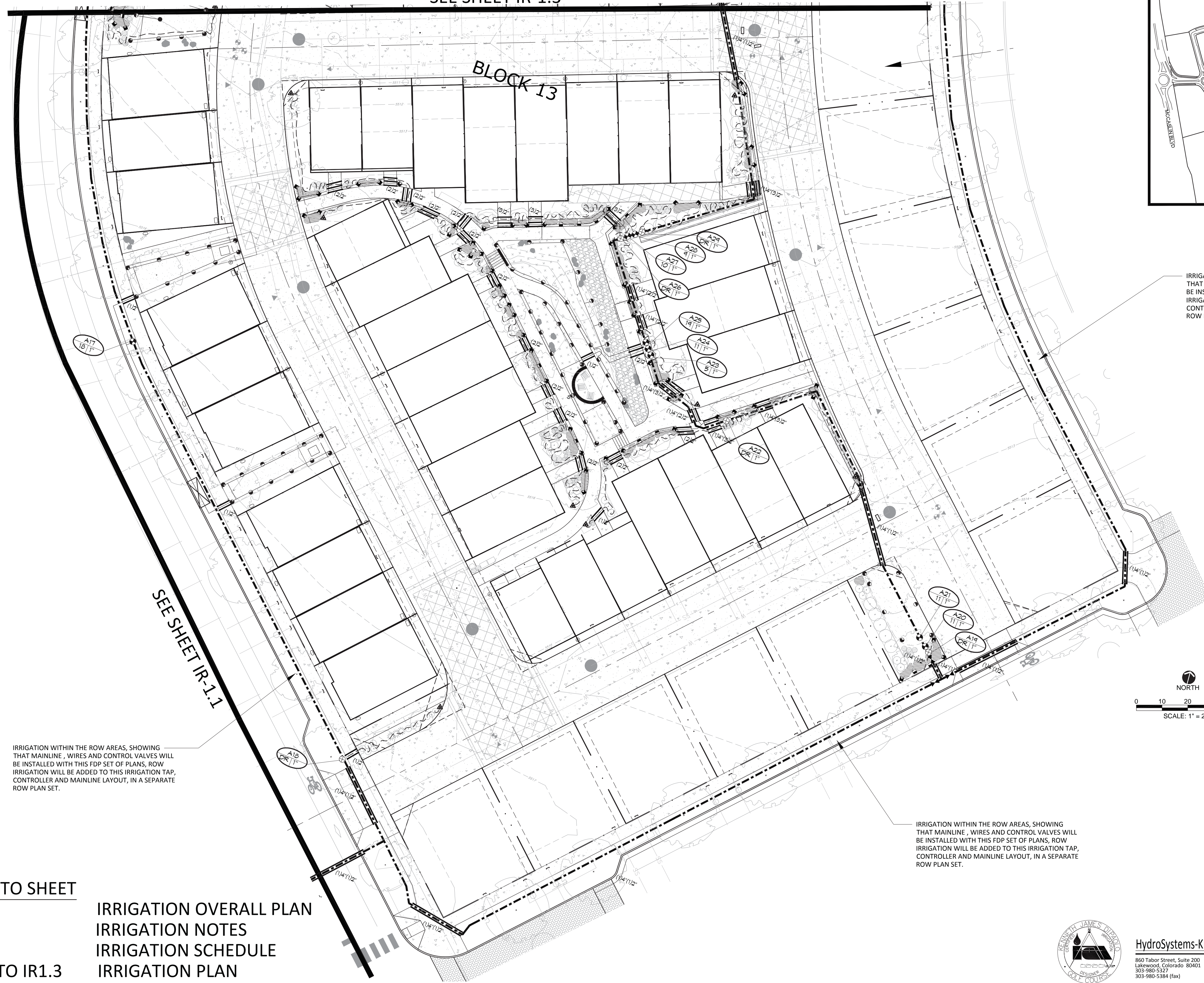


SEE SHEET IR-1.3



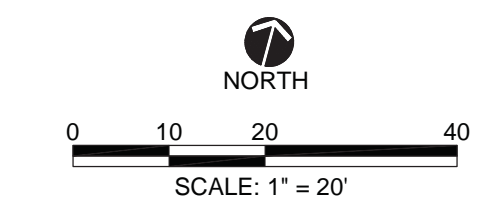
KEY MAP
NORTH

IRRIGATION WITHIN THE ROW AREAS, SHOWING THAT MAINLINE, WIRES AND CONTROL VALVES WILL BE INSTALLED WITH THIS FDP SET OF PLANS, ROW IRRIGATION WILL BE ADDED TO THIS IRRIGATION TAP, CONTROLLER AND MAINLINE LAYOUT, IN A SEPARATE ROW PLAN SET.



IRRIGATION WITHIN THE ROW AREAS, SHOWING THAT MAINLINE, WIRES AND CONTROL VALVES WILL BE INSTALLED WITH THIS FDP SET OF PLANS, ROW IRRIGATION WILL BE ADDED TO THIS IRRIGATION TAP, CONTROLLER AND MAINLINE LAYOUT, IN A SEPARATE ROW PLAN SET.

IRRIGATION WITHIN THE ROW AREAS, SHOWING THAT MAINLINE, WIRES AND CONTROL VALVES WILL BE INSTALLED WITH THIS FDP SET OF PLANS, ROW IRRIGATION WILL BE ADDED TO THIS IRRIGATION TAP, CONTROLLER AND MAINLINE LAYOUT, IN A SEPARATE ROW PLAN SET.



SEE SHEET IR-1.1

REFER TO SHEET
IR1.0
IR1.1
IR1.1
IR1.1 TO IR1.3

IRRIGATION OVERALL PLAN
IRRIGATION NOTES
IRRIGATION SCHEDULE
IRRIGATION PLAN

STC METROPOLITAN DISTRICT #2
141 UNION BLVD., STE 150
LAKEWOOD, CO 80228

SUPERIOR TOWN CENTER
FDP 2 (BLOCK 13) & FDP 3 PHASE 1 (PARTIAL BLOCK 25)
IRRIGATION PLANS

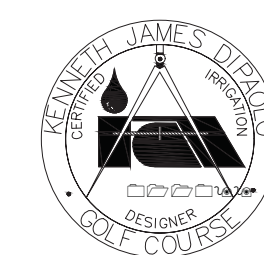
REVISIONS		
NO.	DESCRIPTION	DATE
1	STAFF COMMENTS	5/18/16
2	STAFF COMMENTS -#2	6/01/16
3	STAFF COMMENTS -#3	6/14/16

VESTED RIGHTS
THIS PLAN CONSTITUTES A SITE SPECIFIC DEVELOPMENT PLAN AS DEFINES IN SECTION 24-68-101, ET SEQ., C.R.S., AND CHAPTER 16 OF THE SUPERIOR MUNICIPAL CODE, AVAILABLE AT THE SUPERIOR TOWN HALL, 124 EAST COAL CREEK DRIVE, SUPERIOR, COLORADO.

DESIGNED BY: KJD DATE: 04-08-2016
DRAWN BY: KJD SCALE: AS SHOWN
CHECKED BY: JSB
JOB NO.:
DWG NAME:

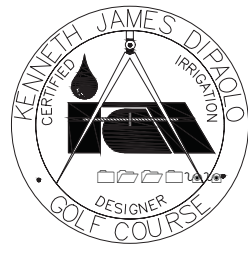
IRRIGATION PLAN

IR1.2



HydroSystems-KDI, Inc. Irrigation Consulting
860 Tabor Street, Suite 200
Lakewood, Colorado 80401
303-980-5327
303-980-5384 (fax)





REFER TO SHEET
 IR1.0
 IR1.1
 IR1.1
 IR1.1 TO IR1.3

IRRIGATION OVERALL PLAN
 IRRIGATION NOTES
 IRRIGATION SCHEDULE
 IRRIGATION PLAN

CONTROLLER LOCATION "A"

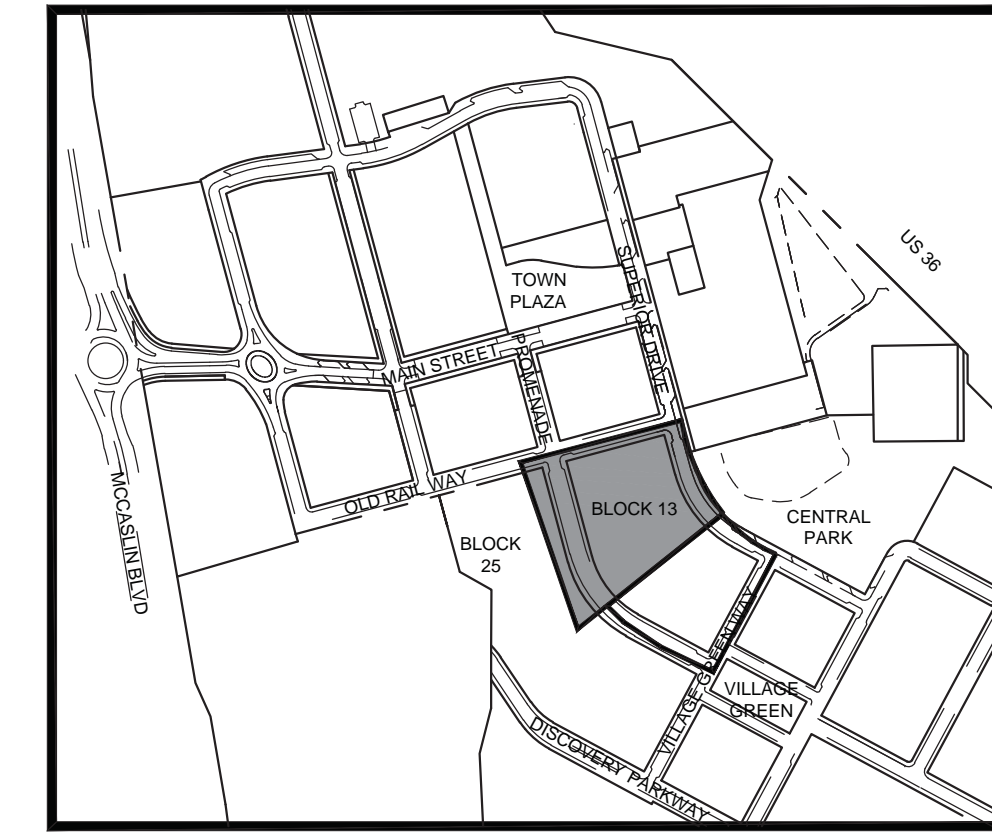
PEDESTAL/WALL MOUNT ONE 98 STATION WEATHERMATIC 2-WIRE CONTROLLER, AT INDICATED LOCATION. 120 VOLT POWER IS AVAILABLE WITHIN 40 LF. OF CONTROLLER LOCATION FROM RESIDENTIAL PEDESTAL ELECTRICAL METER, WIRE/CONDUIT, STEP-DOWN TRANSFORMER AND POWER CONNECTION TO CONTROLLER IS BY CONTRACTOR WITH WORK CONFORMING TO LOCAL CODES. EXTEND PE89 SHIELDED CABLE FROM THE FLOW SENSOR AND 4 #14 UFUL WIRES (TWO BLUE AND TWO ORANGE) FROM MASTER VALVE TO ASSOCIATED CONTROLLER. CONNECT WIRES TO THE APPROPRIATE SENSOR INPUT PORTS. FEES AND PERMITS ASSOCIATED WITH WORK ARE TO BE OBTAINED AND PAID BY CONTRACTOR. FINAL CONTROLLER LOCATION SHALL BE APPROVED BY CONSULTANT PRIOR TO INSTALLATION. MOUNT ONE RAIN SENSOR ON POLE WHERE THERE IS 20 FT. OF CLEARANCE FROM ANY OVERHANG OR OBSTRUCTING FEATURE. CONNECT RAIN GAUGE WIRES TO IRRIGATION CONTROLLER SENSOR PORT THROUGH CONDUIT/INSTALL RAIN SENSOR RECEIVER IN CONTROLLER ENCLOSURE. FINAL RAIN SENSOR LOCATION SHALL BE APPROVED BY CONSULTANT PRIOR TO INSTALLATION.

IRRIGATION WITHIN THE ROW AREAS, SHOWING THAT MAINLINE, WIRES AND CONTROL VALVES WILL BE INSTALLED WITH THIS FDP SET OF PLANS. ROW IRRIGATION WILL BE ADDED TO THIS IRRIGATION TAP, CONTROLLER AND MAINLINE LAYOUT, IN A SEPARATE ROW PLAN SET.

SEE SHEET IR-1.1

POINT OF CONNECTION #1 - 1" NON-POTABLE

PEAK FLOW REQUIREMENT: 20 GPM. REQUIRED STATIC PRESSURE: (TBD) PSI
 TIE ONTO EXISTING 1" COPPER STUB-OUT DOWNSTREAM OF WATER METER AT 54" DEPTH IN THIS APPROXIMATE LOCATION. EXTEND 1" TYPE K SOFT COPPER AT 54" MINIMUM DEPTH TO BACKFLOW PREVENTER LOCATION. INSTALL ONE 1" STOP AND WASTE VALVE, ONE 1" REDUCED PRESSURE BACKFLOW PREVENTER WITH PROTECTIVE ENCLOSURE, ONE MANUAL DRAIN VALVE, ONE QUICK COUPLING VALVE, ONE 1" FLOW SENSOR, ONE 1" MASTER VALVE, ONE 1.5" GATE VALVE, AND EXTEND PVC MAINLINE AS SHOWN. EXTEND ONE PE89 SHIELDED CABLE FROM FLOW SENSOR TO DATA RETRIEVAL UNIT LOCATED IN CONTROLLER "A". EXTEND 4 UFUL14# WIRE (TWO ORANGE AND TWO BLUE) AND CONNECT 2 OF THE WIRES FROM THE MASTER VALVE TO THE DATA RETRIEVAL BOARD IN CONTROLLER "A". SEE DETAIL SHEET FOR REQUIRED PIPE LENGTHS UPSTREAM AND DOWNSTREAM OF FLOW SENSING UNIT. WORK SHALL CONFORM TO LOCAL CODE. FEES AND PERMITS ASSOCIATED WITH WORK ARE TO BE OBTAINED AND PAID FOR BY CONTRACTOR. FINAL BACKFLOW PREVENTER LOCATION SHALL BE REVIEWED AND APPROVED BY CONSULTANT PRIOR TO INSTALLATION.



KEY MAP NORTH

STC METROPOLITAN DISTRICT #2

141 UNION BLVD., STE 150
 LAKEWOOD, CO 80228

SUPERIOR TOWN CENTER
 FDP 2 (BLOCK 13) & FDP 3 PHASE 1 (PARTIAL BLOCK 25)
 IRRIGATION PLANS

REVISIONS		
NO.	DESCRIPTION	DATE
1	STAFF COMMENTS	5/18/16
2	STAFF COMMENTS-#2	6/01/16
3	STAFF COMMENTS-#3	6/14/16

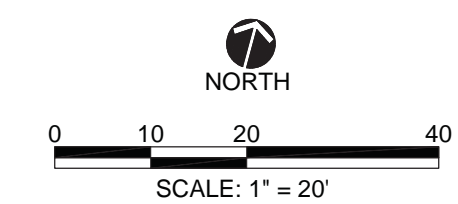
VESTED RIGHTS
 THIS PLAN CONSTITUTES A SITE SPECIFIC DEVELOPMENT PLAN AS DEFINES IN SECTION 24-68-101, ET SEQ., C.R.S., AND CHAPTER 16 OF THE SUPERIOR MUNICIPAL CODE, AVAILABLE AT THE SUPERIOR TOWN HALL, 124 EAST COAL CREEK DRIVE, SUPERIOR, COLORADO.

DESIGNED BY: KJD DATE: 04-08-2016
 DRAWN BY: KJD SCALE: AS SHOWN
 CHECKED BY: JSB
 JOB NO.:
 DWG NAME:

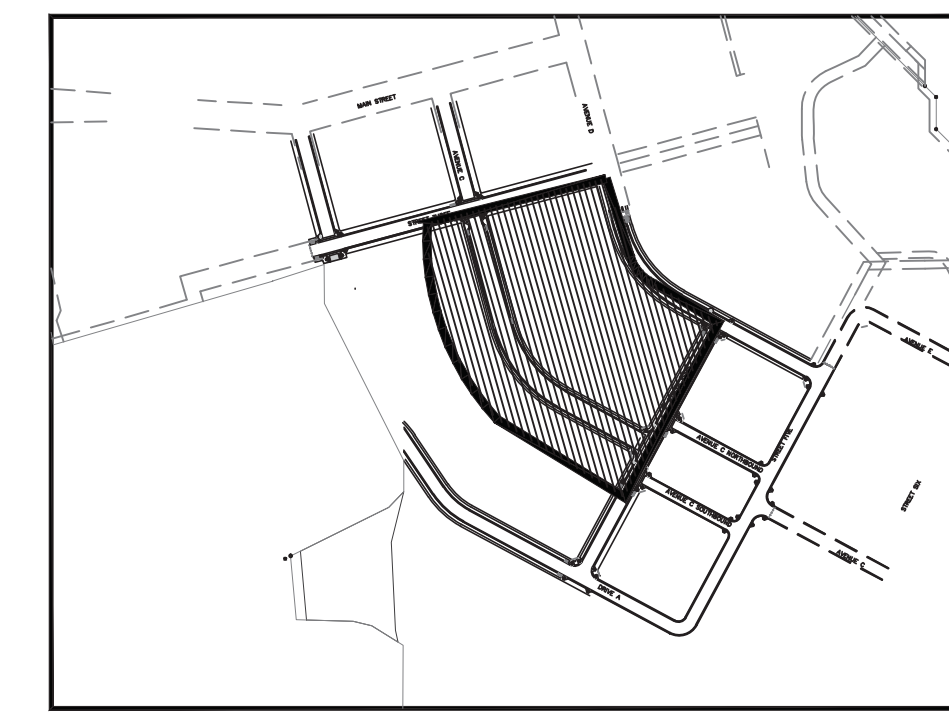
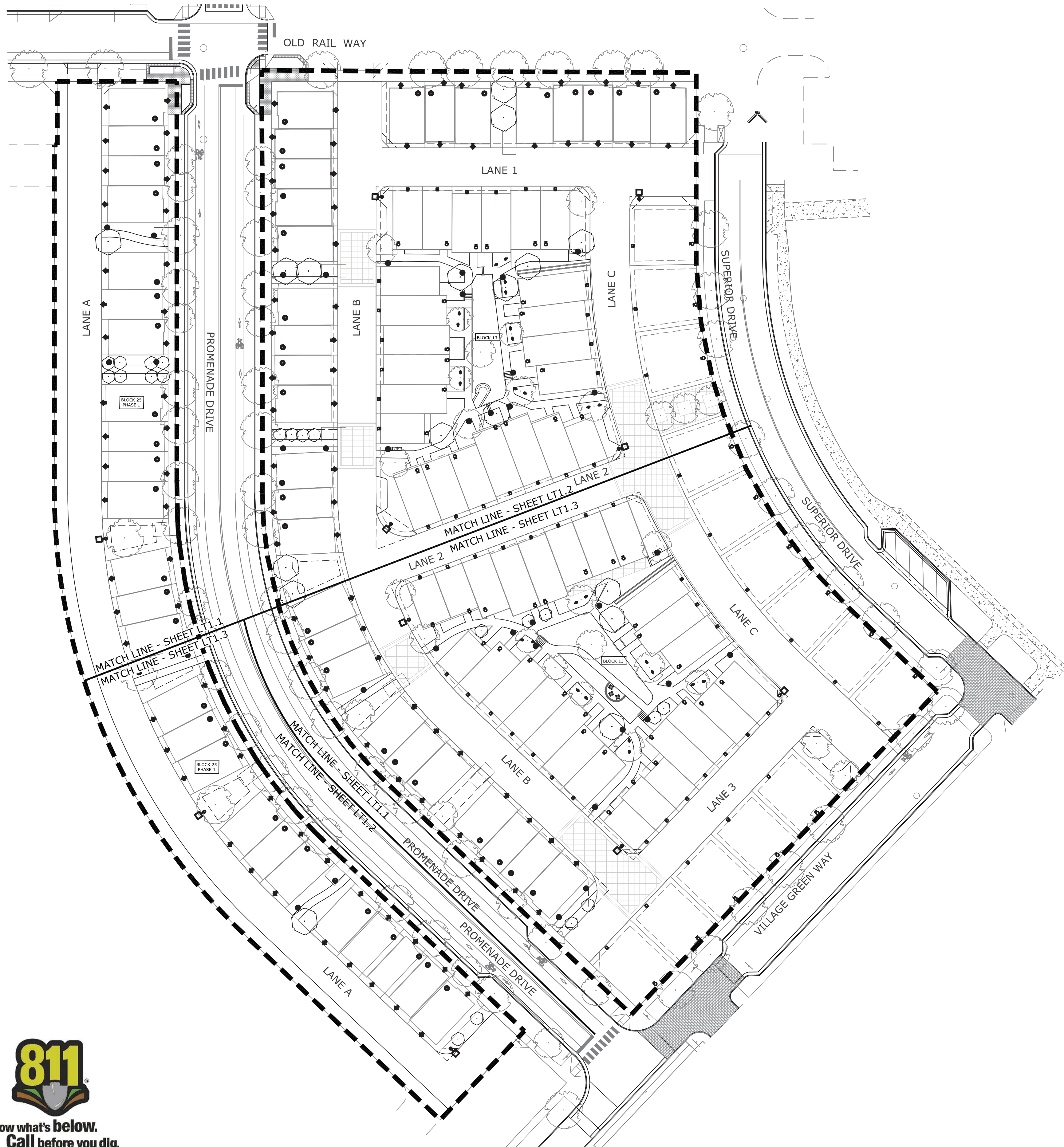
IRRIGATION PLAN

IR1.3

IRRIGATION WITHIN THE ROW AREAS, SHOWING THAT MAINLINE, WIRES AND CONTROL VALVES WILL BE INSTALLED WITH THIS FDP SET OF PLANS. ROW IRRIGATION WILL BE ADDED TO THIS IRRIGATION TAP, CONTROLLER AND MAINLINE LAYOUT, IN A SEPARATE ROW PLAN SET.



SEE SHEET IR-1.2



KEY MAP
NORTH

LABEL	SYMBOL	DESCRIPTION	COLOR TEMP.	BUG RATING	APPROX WATTS	APPROX LUMENS	MOUNTING	LLF	QTY
W01	⊙	(1) WALL-MOUNTED FULL CUTOFF LED SCOFF WITH INTEGRAL DRIVER MOUNTED AT FRONT ENTRIES. NOTE: RECESSED DOWNLIGHT OPTIONAL AT THIS LOCATION IN LIEU OF WALL SCOFF	3000K	-	8	200 - 1000	SURFACE WALL OR RECESSED OPTIONAL	1.00	62
W02	⊠	(1) WALL-MOUNTED FULL CUTOFF LED SCOFF WITH INTEGRAL DRIVER MOUNTED ABOVE GARAGES	3000K	-	18	805	SURFACE WALL	1.00	62
W03	⊙	(1) CEILING RECESSED LED DOWNLIGHT	3000K	-	8	650	CEILING RECESSED	1.00	55
W04	⊠	(1) WALL-MOUNTED BARN STYLE GOOSENECK LED SCOFF	3000K	-	15	1000	SURFACE WALL	1.00	110
G01	⊕	(1) LOW-OUTPUT LED BOLLARD PATHLIGHT WITH INTEGRAL DRIVER	3000K	-	10	720	GROUND	1.00	34
G02	⊠	(1) GROUND-MOUNTED DIRECTIONAL LED LANDSCAPE ACCENT LIGHT	2900K	-	3.6	196	GROUND	1.00	20
G03	⊕	(1) 12-# PEDESTRIAN POLE-MOUNTED LED LUMINAIRE	3000K	B1-U1-G1	47	2150	GROUND / POLE	1.00	9

ILLUMINANCE CALCULATION SUMMARY - WALKWAYS AND DRIVEWAYS (fc)				
	avg	max	min	avg/min
TYPICAL CUT-THROUGH WALKWAYS	0.22	0.9	0.0	N/A
BLOCK 25 DRIVEWAYS	0.47	4.1	0.0	N/A
BLOCK 13 DRIVEWAYS	0.91	4.1	0.2	4.6
NORTH COURTYARD WALKWAYS	0.23	2.1	0.0	N/A
SOUTH COURTYARD WALKWAYS	0.19	1.7	0.0	N/A

CLANTON & ASSOCIATES
LIGHTING DESIGN AND ENGINEERING

STC METROPOLITAN DISTRICT

141 UNION BLD., SUITE 150
LAKEWOOD, CO 80228

SUPERIOR TOWN CENTER
FDP 2 (BLOCK 13) & FDP 3 PHASE 1 (PARTIAL BLOCK 25)
SUPERIOR, COLORADO

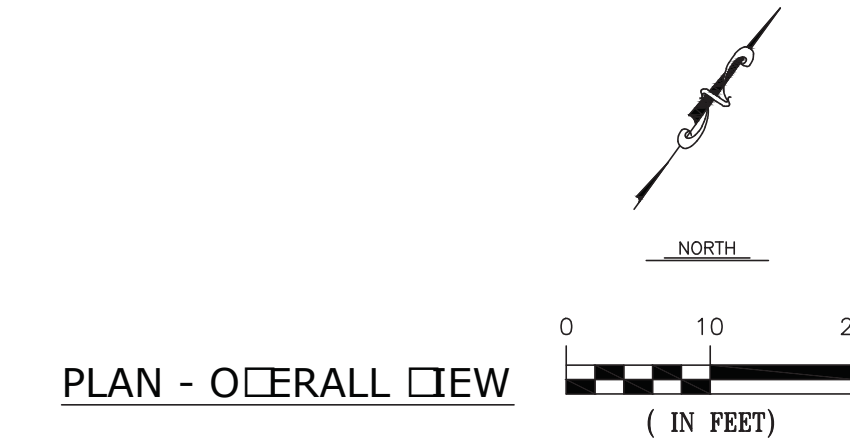
REVISIONS		
NO.	DESCRIPTION	DATE
2	STAFF COMMENTS	06/01/16
3	STAFF COMMENTS	06/14/16

VESTED RIGHTS
THIS PLAN CONSTITUTES A SITE SPECIFIC DEVELOPMENT PLAN AS DEFINES IN SECTION 24-68-101, ET SEQ., C.R.S., AND CHAPTER 16 OF THE SUPERIOR MUNICIPAL CODE, AVAILABLE AT THE SUPERIOR TOWN HALL, 124 EAST COAL CREEK DRIVE, SUPERIOR, COLORADO.

DESIGNED BY: AS DATE: June 10, 2016
DRAWN BY: TP SCALE: 1"=20'
CHECKED BY: GA
JOB NO.: 228.001.04
DWG NAME: STC\PH2-FDP2\LIGHTING\PLANS.DWG

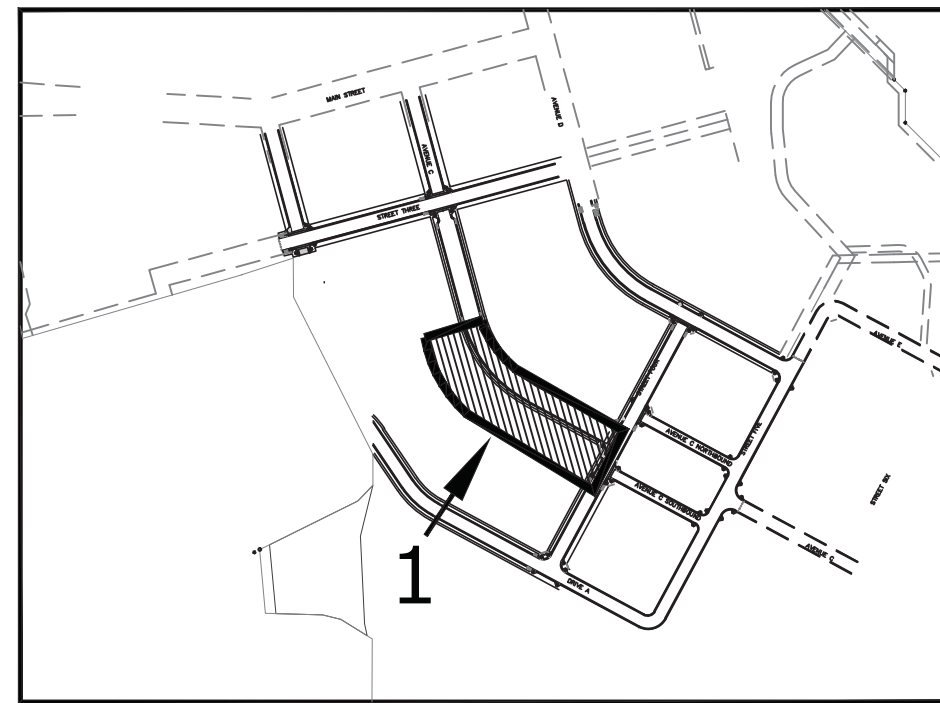
OVERALL SITE LIGHTING PLAN

SHEET:
LT1.0

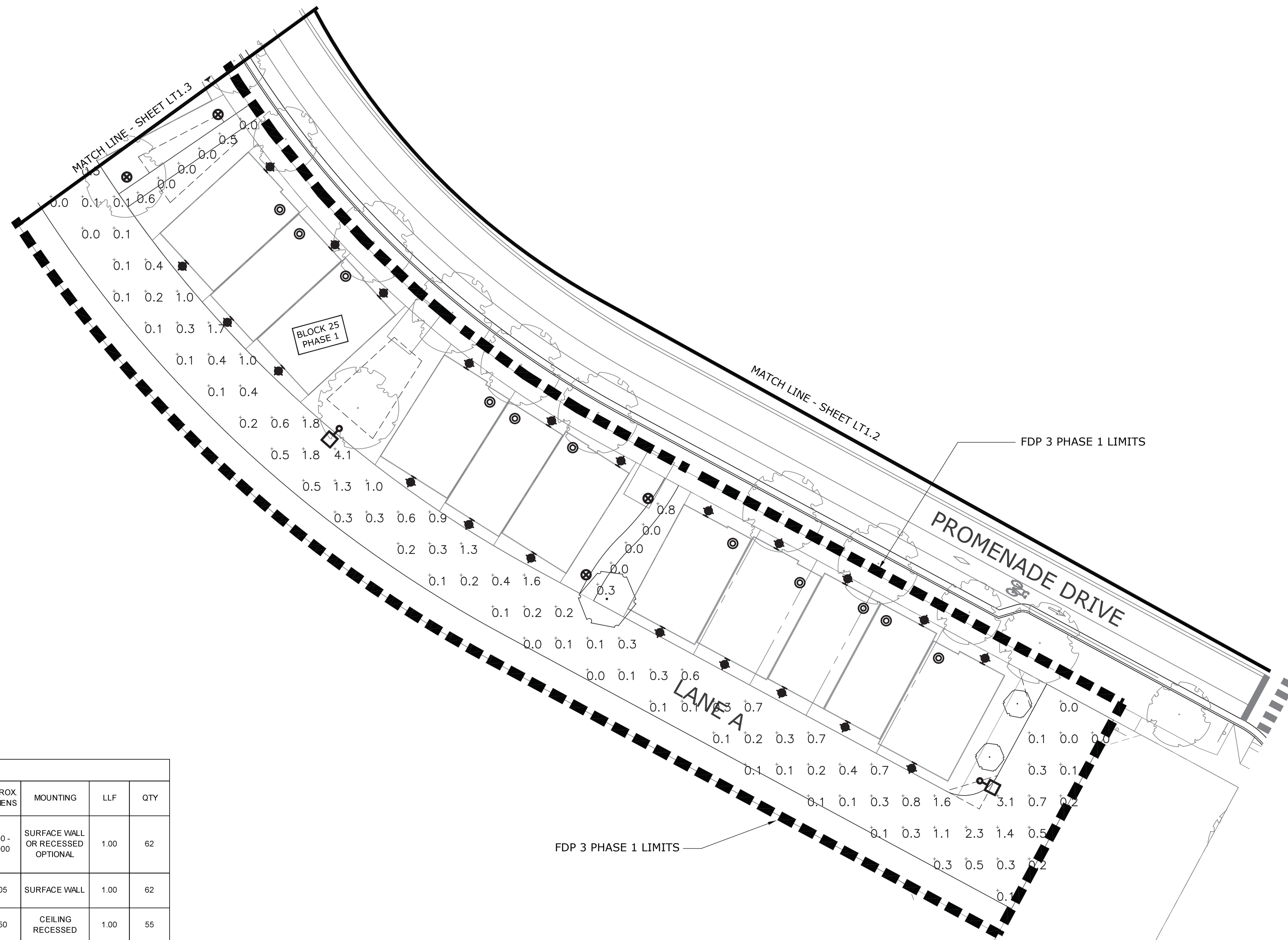




Know what's below.
Call before you dig.



KEY MAP



LUMINAIRE SCHEDULE									
LABEL	SYMBOL	DESCRIPTION	COLOR TEMP.	BUG RATING	APPROX WATTS	APPROX LUMENS	MOUNTING	LLF	QTY
W01	⊙	(1) WALL-MOUNTED FULL CUTOFF LED SCOFF WITH INTEGRAL DRIVER MOUNTED AT FRONT ENTRIES. NOTE: RECESSED DOWNLIGHT OPTIONAL AT THIS LOCATION IN LIEU OF WALL SCOFF	3000K	-	8	200-1000	SURFACE WALL OR RECESSED OPTIONAL	1.00	62
W02	⊠	(1) WALL-MOUNTED FULL CUTOFF LED SCOFF WITH INTEGRAL DRIVER MOUNTED ABOVE GARAGES	3000K	-	18	805	SURFACE WALL	1.00	62
W03	⊙	(1) CEILING RECESSED LED DOWNLIGHT	3000K	-	8	650	CEILING RECESSED	1.00	55
W04	⬢	(1) WALL-MOUNTED BARN STYLE GOOSENECK LED SCOFF	3000K	-	15	1000	SURFACE WALL	1.00	110
G01	⊕	(1) LOW-OUTPUT LED BOLLARD PATHLIGHT WITH INTEGRAL DRIVER	3000K	-	10	720	GROUND	1.00	34
G02	↔	(1) GROUND-MOUNTED DIRECTIONAL LED LANDSCAPE ACCENT LIGHT	2900K	-	3.6	196	GROUND	1.00	20
G03	⊙	(1) 12-# PEDESTRIAN POLE-MOUNTED LED LUMINAIRE	3000K	B1-U1-G1	47	2150	GROUND / POLE	1.00	9

CLANTON & ASSOCIATES
LIGHTING DESIGN AND ENGINEERING

STC METROPOLITAN DISTRICT

141 UNION BLDG., SUITE 150
LAKEWOOD, CO 80228

SUPERIOR TOWN CENTER
FDP 2 (BLOCK 13) & FDP 3 PHASE 1 (PARTIAL BLOCK 25)
SUPERIOR, COLORADO

REVISIONS		
NO.	DESCRIPTION	DATE
2	STAFF COMMENTS	06/01/16
3	STAFF COMMENTS	06/14/16

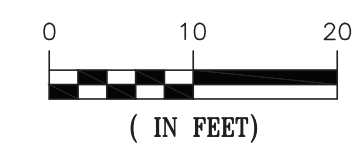
VESTED RIGHTS
THIS PLAN CONSTITUTES A SITE SPECIFIC DEVELOPMENT PLAN AS DEFINES IN SECTION 24-68-101, ET SEQ., C.R.S., AND CHAPTER 16 OF THE SUPERIOR MUNICIPAL CODE, AVAILABLE AT THE SUPERIOR TOWN HALL, 124 EAST COAL CREEK DRIVE, SUPERIOR, COLORADO.

DESIGNED BY: AS DATE: June 10, 2016
DRAWN BY: TP SCALE: 1"=20'
CHECKED BY: GA
JOB NO.: 228.001.04
DWG NAME: STC\PH2-FDP2\LIGHTING\PLANS.DWG

PARTIAL LIGHTING PLAN

SHEET:
LT1.1

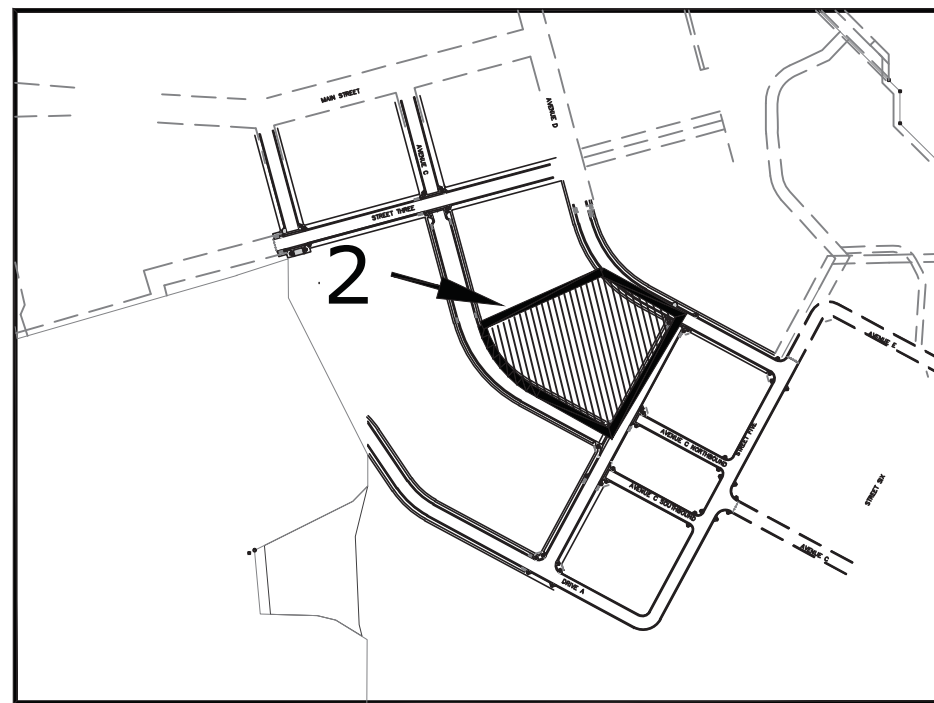
PLAN - VIEW 1



(IN FEET)

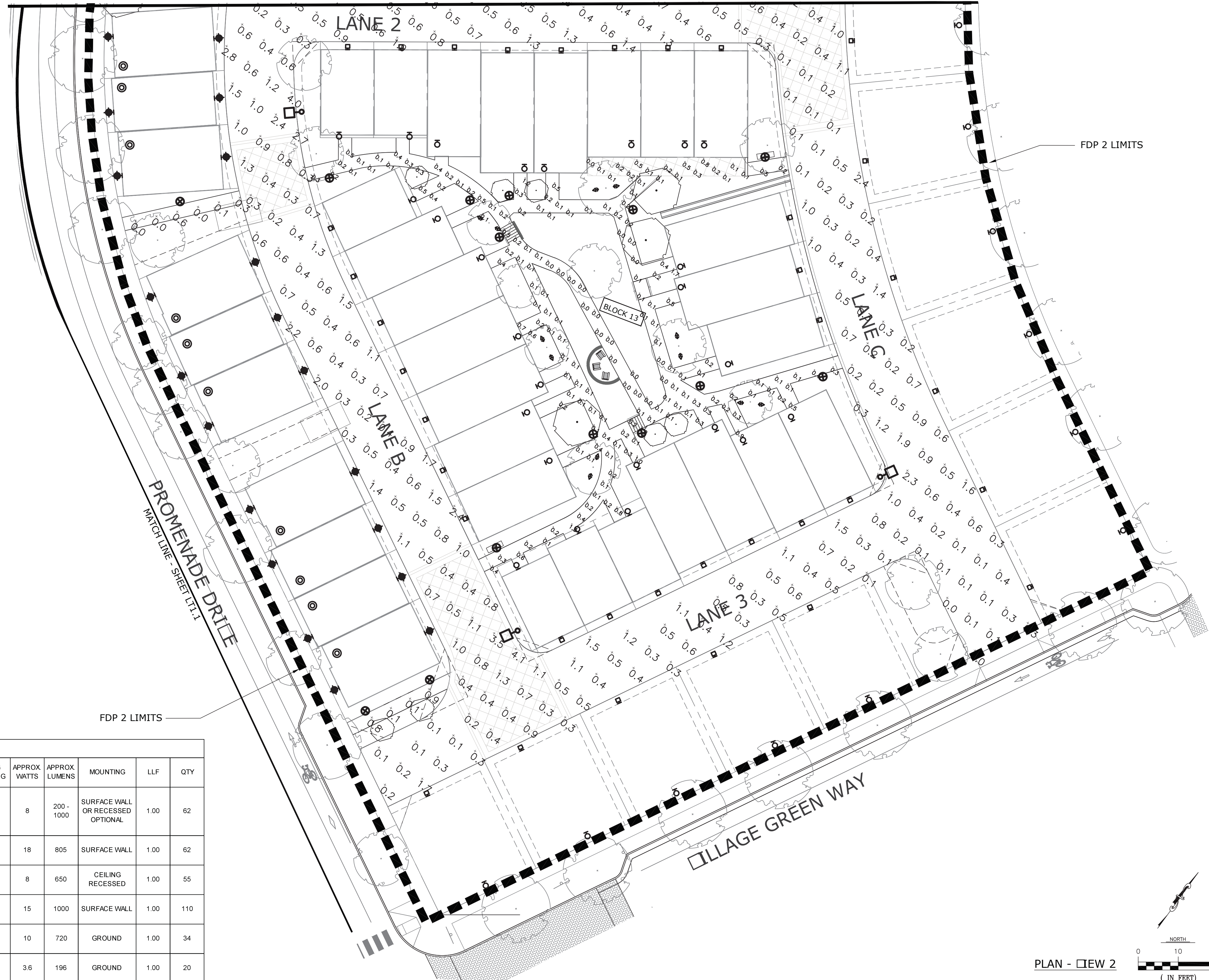


Know what's below.
Call before you dig.



KEY MAP
NORTH

MATCH LINE - SHEET LT1.3



CLANTON & ASSOCIATES

LIGHTING DESIGN AND ENGINEERING

STC METROPOLITAN DISTRICT

141 UNION BLDG., SUITE 150
LAKEWOOD, CO 80228

SUPERIOR TOWN CENTER
FDP 2 (BLOCK 13) & FDP 3 PHASE 1 (PARTIAL BLOCK 25)
SUPERIOR, COLORADO

REVISIONS

NO.	DESCRIPTION	DATE
2	STAFF COMMENTS	06/01/16
3	STAFF COMMENTS	06/14/16

VESTED RIGHTS

THIS PLAN CONSTITUTES A SITE SPECIFIC DEVELOPMENT PLAN AS DEFINES IN SECTION 24-68-101, ET SEQ., C.R.S., AND CHAPTER 16 OF THE SUPERIOR MUNICIPAL CODE, AVAILABLE AT THE SUPERIOR TOWN HALL, 124 EAST COAL CREEK DRIVE, SUPERIOR, COLORADO.

DESIGNED BY: AS DATE: June 10, 2016
DRAWN BY: TP SCALE: 1"=20'
CHECKED BY: GA
JOB NO.: 228.001.04
DWG NAME: STC\CPH2-FDP2\LIGHTING\PLANS.DWG

PARTIAL LIGHTING PLAN

SHEET:
LT1.2

LUMINAIRE SCHEDULE

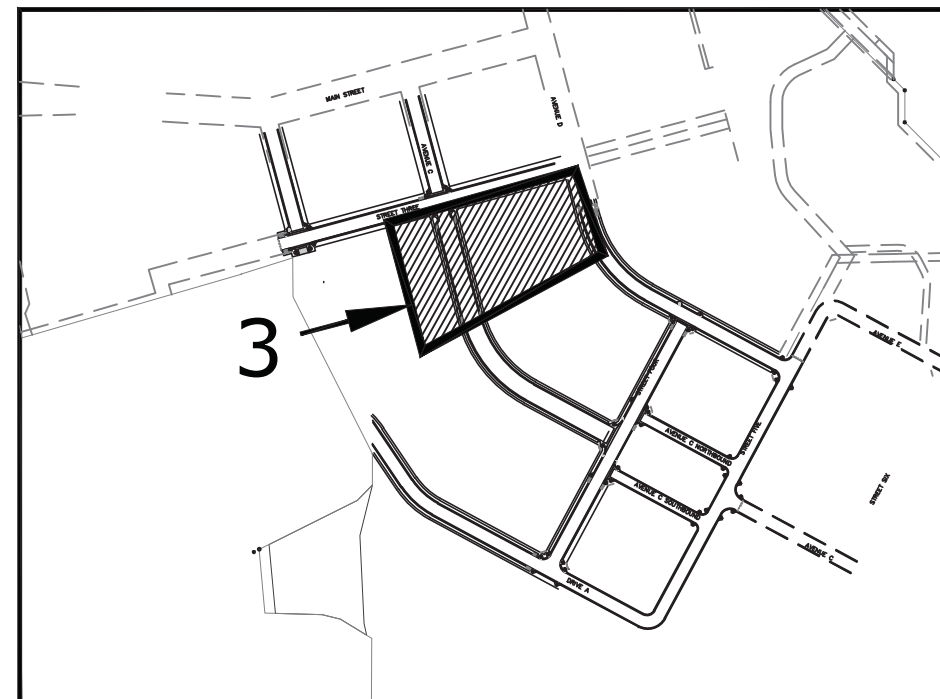
LABEL	SYMBOL	DESCRIPTION	COLOR TEMP.	BUG RATING	APPROX. WATTS	APPROX. LUMENS	MOUNTING	LLF	QTY
W01	⊙	(1) WALL-MOUNTED FULL CUTOFF LED SCENCE WITH INTEGRAL DRIVER MOUNTED AT FRONT ENTRIES. NOTE: RECESSED DOWNLIGHT OPTIONAL AT THIS LOCATION IN LIEU OF WALL SCENCE	3000K	-	8	200 - 1000	SURFACE WALL OR RECESSED OPTIONAL	1.00	62
W02	⊠	(1) WALL-MOUNTED FULL CUTOFF LED SCENCE WITH INTEGRAL DRIVER MOUNTED ABOVE GARAGES	3000K	-	18	805	SURFACE WALL	1.00	62
W03	⊙	(1) CEILING RECESSED LED DOWNLIGHT	3000K	-	8	650	CEILING RECESSED	1.00	55
W04	⬢	(1) WALL-MOUNTED BARN STYLE GOOSENECK LED SCENCE	3000K	-	15	1000	SURFACE WALL	1.00	110
G01	⊕	(1) LOW-OUTPUT LED BOLLARD PATHLIGHT WITH INTEGRAL DRIVER	3000K	-	10	720	GROUND	1.00	34
G02	⬢	(1) GROUND-MOUNTED DIRECTIONAL LED LANDSCAPE ACCENT LIGHT	2900K	-	3.6	196	GROUND	1.00	20
G03	⊙	(1) 12-# PEDESTRIAN POLE-MOUNTED LED LUMINAIRE	3000K	B1-U1-G1	47	2150	GROUND / POLE	1.00	9

PLAN - VIEW 2



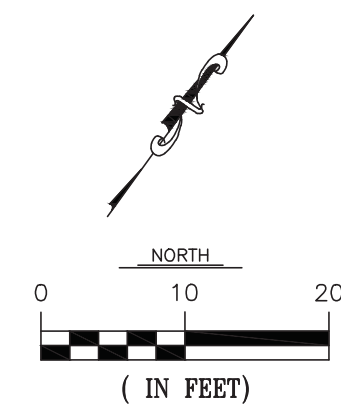


Know what's below.
Call before you dig.



KEY MAP

NORTH



(IN FEET)

FDP 3 PHASE 1 LIMITS

OLD RAIL WAY

FDP 2 LIMITS

PROMENADE DRIVE

SUPERIOR DRIVE

LANE 1

LANE B

LANE C

LANE 2

BLOCK 25
PHASE 1

BLOCK 13

LUMINAIRE SCHEDULE

LABEL	SYMBOL	DESCRIPTION	COLOR TEMP.	BUG RATING	APPROX. WATTS	APPROX. LUMENS	MOUNTING	LLF	QTY
W01	⊙	(1) WALL-MOUNTED FULL CUTOFF LED SCOFF WITH INTEGRAL DRIVER MOUNTED AT FRONT ENTRIES. NOTE: RECESSED DOWNLIGHT OPTIONAL AT THIS LOCATION IN LIEU OF WALL SCOFF	3000K	-	8	200-1000	SURFACE WALL OR RECESSED OPTIONAL	1.00	62
W02	⊠	(1) WALL-MOUNTED FULL CUTOFF LED SCOFF WITH INTEGRAL DRIVER MOUNTED ABOVE GARAGES	3000K	-	18	805	SURFACE WALL	1.00	62
W03	⊙	(1) CEILING RECESSED LED DOWNLIGHT	3000K	-	8	650	CEILING RECESSED	1.00	55
W04	⬢	(1) WALL-MOUNTED BARN STYLE GOOSENECK LED SCOFF	3000K	-	15	1000	SURFACE WALL	1.00	110
G01	⊕	(1) LOW-OUTPUT LED BOLLARD PATHLIGHT WITH INTEGRAL DRIVER	3000K	-	10	720	GROUND	1.00	34
G02	⬢	(1) GROUND-MOUNTED DIRECTIONAL LED LANDSCAPE ACCENT LIGHT	2900K	-	3.6	196	GROUND	1.00	20
G03	⊠	(1) 12-A PEDESTRIAN POLE-MOUNTED LED LUMINAIRE	3000K	B1-U1-G1	47	2150	GROUND/POLE	1.00	9

CLANTON & ASSOCIATES
LIGHTING DESIGN AND ENGINEERING

STC METROPOLITAN DISTRICT

141 UNION BLD., SUITE 150
LAKEWOOD, CO 80228

SUPERIOR TOWN CENTER
FDP 2 (BLOCK 13) & FDP 3 PHASE 1 (PARTIAL BLOCK 25)
SUPERIOR, COLORADO

NO.	DESCRIPTION	DATE
2	STAFF COMMENTS	06/01/16
3	STAFF COMMENTS	06/14/16

VESTED RIGHTS
THIS PLAN CONSTITUTES A SITE SPECIFIC DEVELOPMENT PLAN AS DEFINES IN SECTION 24-68-101, ET SEQ., C.R.S., AND CHAPTER 16 OF THE SUPERIOR MUNICIPAL CODE, AVAILABLE AT THE SUPERIOR TOWN HALL, 124 EAST COAL CREEK DRIVE, SUPERIOR, COLORADO.

DESIGNED BY: AS DATE: June 10, 2016
DRAWN BY: TP SCALE: 1"=20'
CHECKED BY: GA
JOB NO.: 228.001.04
DWG NAME: STC\PH2-FDP2\LIGHTINGPLANS.DWG

PARTIAL LIGHTING PLAN

SHEET:
LT1.3

MATCH LINE - SHEET LT1.1

MATCH LINE - SHEET LT1.2

PLAN - VIEW 3

PASADENA - model: WS-W626 LED Interior & Exterior Sconce



Fixture Type:

Catalog Number:

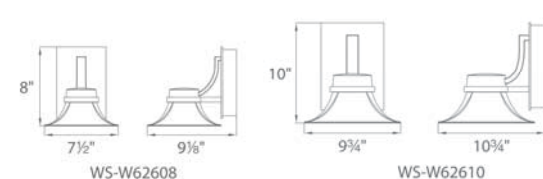
Project:

Location:

PRODUCT DESCRIPTION
Design inspired by the Gamble House, one of the finest examples of American bungalow style architecture. Pasadena exhibits California arts and crafts styling in an energy conscious LED design that also prevents light pollution of the night sky.

- FEATURES**
- ETL & cETL wet location listed, IP65 rated
 - Dark Sky friendly
 - Aluminum construction with mouth blown etched opal glass
 - Full range dimming when used with compatible dimmers
 - Driver located in canopy
 - Universal driver (120V-220V-277V)
 - 80,000 hour rated life
 - Color Temp: 3000K
 - CRI: 90

SPECIFICATIONS
Construction: Aluminum construction with mouth blown etched opal glass.
Light Source: High output LED.
Finish: Graphite (GH), Bronze (BZ).
Standards: ETL & cETL damp location listed, IP65 rated, Dark Sky friendly.



ORDER NUMBER

Model	Height	Wattage	Voltage	LED Lumens	Delivered Lumens	Finish
WS-W62608	8"	30W	120V-220V-277V	425	210	BZ Bronze
WS-W62610	10"	30W	120V-220V-277V	425	210	GH Graphite

Example: WS-W62608-BZ

modernforms.com Phone: (800) 526-2588 Fax: (800) 526-2585
Headquarters/Eastern Distribution Center 44 Harbor Park Drive Port Washington, NY 11050
Central Distribution Center 1600 Distribution Ct Lithia Springs, GA 30122
Western Distribution Center 1750 Archibald Avenue Ontario, CA 91760

TUBE ARCHITECTURAL DS-WS05 WAC LIGHTING LED Wall Mounts Responsible Lighting®



PRODUCT DESCRIPTION
The latest energy efficient LED technology in an appealing cylindrical profile delivers accent and wall wash lighting. Comes in various light distribution and beam angle options.

FEATURES

- High performance exterior rated LED pendant
- Fixture can install upside down to alter light distribution
- Aluminum construction
- 80,000 hour rated life
- 5-year warranty

SPECIFICATIONS
Input: 120V-277VAC
Dimming: 0-10V Dimming
Standards: Energy Star®, Meets 2013 California Title 24 Efficiency IP65 rated, ETL & cETL wet location listed

ORDERING NUMBER

Diámetro	Watt	Color Temp	CRI	Lumen	CRCP	Energy Star® Title 24	Light Distribution	Finish
59275	2700K	80	1071	4830			Straight up or down 20°	Black
5275	2700K	85	1260	5730			Straight up or down 20°	White
59305	3000K	90	1210	5430			Straight up or down 20°	Bronze
5305	3000K	85	1360	6110			Straight up or down 20°	Graphite
5355	3500K	85	1610	7065			Straight up or down 20°	
62275	2700K	80	1067	3094			Straight up or down 20°	Black
N275	2700K	85	1255	3640			Straight up or down 20°	White
N9305	3000K	90	1242	3119			Straight up or down 20°	Bronze
N1305	3000K	85	1309	3021			Straight up or down 20°	Graphite
N355	3500K	85	1575	4485			Straight up or down 20°	
F9275	2700K	90	986	2057			36°	Black
F275	2700K	85	1160	2420			36°	White
F9305	3000K	90	1228	2390			36°	Bronze
F305	3000K	85	1380	2065			36°	Graphite
F355	3500K	85	1450	3045			36°	
F927A	2700K	90	1029				Away from the wall	Black
F27A	2700K	85	1210				Away from the wall	White
F930A	3000K	90	1195				Away from the wall	Bronze
F30A	3000K	85	1455				Away from the wall	Graphite
F35A	3500K	85	1560				Away from the wall	
F927B	2700K	90	1029				Towards the wall	Black
F27B	2700K	85	1210				Towards the wall	White
F930B	3000K	90	1295				Towards the wall	Bronze
F30B	3000K	85	1455				Towards the wall	Graphite
F35B	3500K	85	1560				Towards the wall	

DS-WS05 - _____
Example: DS-WS05-F930A-WT

wacighting.com Phone: (800) 526-2588 Fax: (800) 526-2585
Headquarters/Eastern Distribution Center 44 Harbor Park Drive Port Washington, NY 11050
Central Distribution Center 1600 Distribution Ct Lithia Springs, GA 30122
Western Distribution Center 1750 Archibald Avenue Ontario, CA 91760

PHILIPS LIGHTOLIER Downlighting LyteCaster
4" Round downlight 650 Lumens

Project: _____
Location: _____
Cat. No.: _____
Type: _____
Lamps: Qty. _____
Notes: _____

Complete product = Frame-in kit + Adjustable light engine / Trim Order each separately

Ordering guide: Frame-in kit Example: L4RAEVA

Series	Frame type	Dimming	Input voltage	Version
L4R	LyteCaster 4" Round	ELV/Triac dimming	120V	Version A¹

Ordering guide: Light engine Example: L4R0682VA

Series	Lumens	CRI	CCT	Version
L4R	650	80	27-2700K	Version A¹

Ordering guide: Trim Example: L4R0W

Series	Luminaire type	Finish
L4R	Open Downlight	Clear diffuse (with white flange)

1. Version A (VA) frames and light engines are not compatible with previous versions.
LyteCaster L4R Downlight Spec: 12/15 page 1 of 4

RUBIX - model: WS-W2509, WS-W2510 WAC LIGHTING LED Wall Mount Responsible Lighting®



Fixture Type:

Catalog Number:

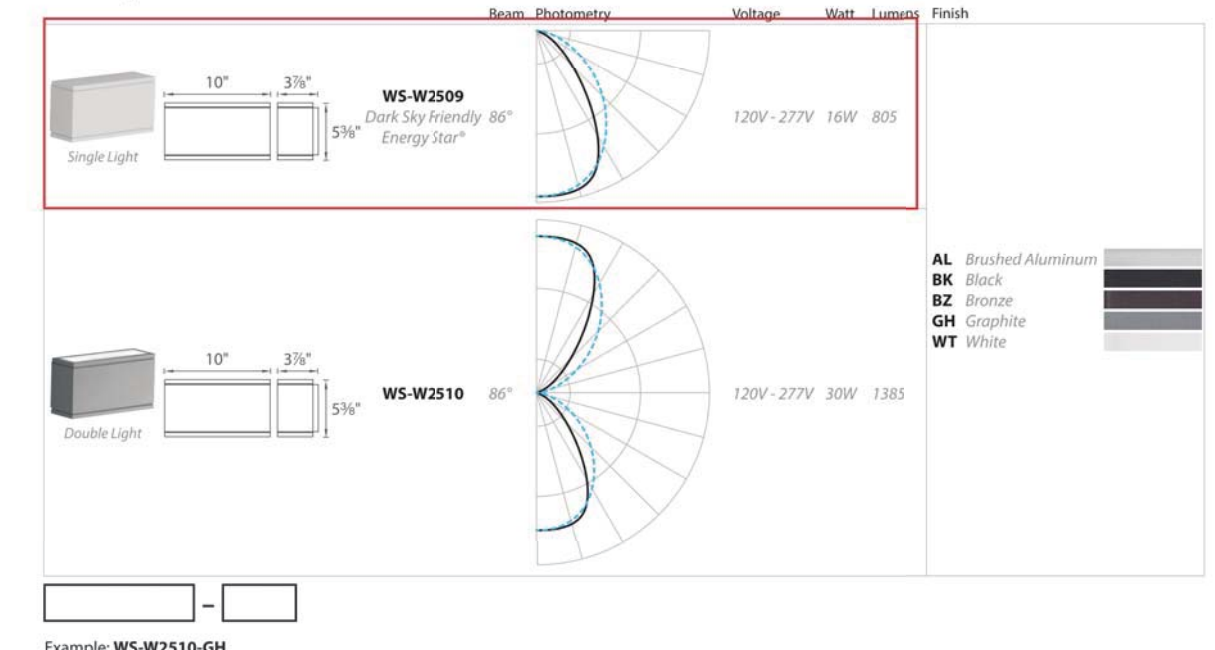
Project:

Location:

PRODUCT DESCRIPTION
Available in angle- and twin-light configurations, this die cast aluminum LED wall luminaire is wet location listed for a broad range of exterior lighting applications. Designed with an oblong profile, this version of Rubix mounts upwards or downwards.

SPECIFICATIONS
Construction: Aluminum with etched glass.
Power: Integral driver in luminaire, 120V-277V input.
Light Source: High output LED
Mounting: Mounts directly to junction box
Dimming: 0-10V Dimming, 100%-10%
ELV Dimming: 100%-15% (120V only)
Finish: Brushed Aluminum (AL), Black (BK), Bronze (BZ), Graphite (GH), White (WT)
Color Temp: 3000K
Rated Life: 70,000 hours
Standards: Energy Star® rated, IP65 Rated, ETL & cETL Wet Location Listed, CEC Title 24 Compliant, Dark Sky Friendly, ADA Compliant

- FEATURES**
- Energy Star® rated
 - CEC Title 24 Compliant
 - Mounts Up or Down
 - IP65 Rated, ETL & cETL Wet Location Listed
 - Die Cast Aluminum Construction
 - Universal Voltage Input (120V-277V)
 - Dimming: ELV (120V) or 0-10V
 - ADA Compliant



wacighting.com Phone: (800) 526-2588 Fax: (800) 526-2585
Headquarters/Eastern Distribution Center 44 Harbor Park Drive Port Washington, NY 11050
Central Distribution Center 1600 Distribution Ct Lithia Springs, GA 30122
Western Distribution Center 1750 Archibald Avenue Ontario, CA 91760

1 TYPE W01ENTRY - OPTION 1 - WALL SCENCE LT1.4 NOT TO SCALE

2 TYPE W01ENTRY - OPTION 2 - WALL SCENCE LT1.4 NOT TO SCALE

3 TYPE W01ENTRY - OPTION 3 - DOWN LIGHT LT1.4 NOT TO SCALE

4 TYPE W02WALL SCENCE - GARAGE LT1.4 NOT TO SCALE

PHILIPS LIGHTOLIER Downlighting LyteCaster
4" Round downlight 650 Lumens

Project: _____
Location: _____
Cat. No.: _____
Type: _____
Lamps: Qty. _____
Notes: _____

Complete product = Frame-in kit + Adjustable light engine / Trim Order each separately

Ordering guide: Frame-in kit Example: L4RAEVA

Series	Frame type	Dimming	Input voltage	Version
L4R	LyteCaster 4" Round	ELV/Triac dimming	120V	Version A¹

Ordering guide: Light engine Example: L4R0682VA

Series	Lumens	CRI	CCT	Version
L4R	650	80	27-2700K	Version A¹

Ordering guide: Trim Example: L4R0W

Series	Luminaire type	Finish
L4R	Open Downlight	Clear diffuser (with white flange)

1. Version A (VA) frames and light engines are not compatible with previous versions.
LyteCaster L4R Downlight Spec: 12/15 page 1 of 4

5 TYPE W03ENTRY - RECESSED DOWN LIGHT - WONDERLAND HOMES LT1.4 NOT TO SCALE

6/13/2016 Warehouse 9 1/2" Barn Black Goose-neck Outdoor Wall Light - BSC414 | LampsPlus.com
LAMPS PLUS THE NATION'S LARGEST LIGHTING RETAILER
Shop by Room/Trends Store Locations Rate Us 800-782-1967
Warehouse 9 1/2" Barn Black Goose-neck Outdoor Wall Light
Write a Review
White finish inside this rustic outdoor wall light's shade increases reflectivity to produce a powerful illumination.
Add a chic, rustic touch to your house, garage or any outdoor building with this black finish, barn style aluminum outdoor wall light. Made in the U.S.A., it features a classic RLM shade with white interior to maximize reflectivity. Stylish and functional, it can accept a high-wattage bulb to produce plentiful, bright light.
• Barn style outdoor wall light.
• Made in the USA.
• Black finish.
• RLM warehouse shade with white finish interior.
• Aluminum construction.
• A fresh take on the look of industrial or barn lights.
• Maximum 200 watt or equivalent bulb (not included).
• Measures 16" wide, 3 1/2" high.
• Extends 22 1/2" from the wall.
• Back plate is 4 3/4" wide.

6 TYPE W04WALL SCENCE - WONDERLAND HOMES LT1.4 NOT TO SCALE

aurora light. TYPE: CAT # LSL2
LSL2 KENTIA
The Kentia is a compact, low energy LED spotlight machined from solid brass and copper bar. Artistic styling and precise machining make this fixture attractive and functional. Engineered to provide an ideal heat-sink for the High Flux LED array, the Kentia addresses the need for thermal management head on. The exceptional thermal conductivity of brass or copper construction together with the finned design provides excellent convection to the exterior environment. The Kentia has an integral LED driver that allows it to operate on standard 12 volt systems with no additional hardware needed. The Kentia, while not intended for submerged applications, is engineered to IP 68 standards protecting against water intrusion. Testing at the factory by total submersion virtually guarantees that the luminaire and all its internal components will remain protected from moisture regardless of mounting orientation. Manufactured exclusively by AuroraLight, in the USA and backed by our Lifetime Warranty.

ORDERING GUIDE: LSL2
RED INDICATES REQUIRED FIELD

MATERIAL	OPTIC	LED (3 WATT)	MOUNT	ACCESSORIES	FINISH
[BR] Brass	[N] Narrow 10°	[27] 270K	[12] 1/2" Male Thread	[R5] Hex Bolt	[NAT] Natural
[CU] Copper	[M] Medium 25°	[29] 290K	[15] 3/8" Male Thread		[BLP] Bronze Living Pattern
	[W] Wide 47°	[45] 450K	[18-X] Outdoor Spike (Specify 9" or 12")		[DN] Brushed Natural PVD
	[WP] Flood 60°	[270] 270K	[TR-X] Trident Spike (Specify 9" or 12")		
	[A] 40°	[300] 300K	[TR-X] 120-12V Power Box w/ (Specify) O Box Only, B Stake or TR Trident Spike		
		[450] 450K XPG	[183-X] J-Box Mount w/ (Specify) O Box Only, B Stake or TR Trident Spike		
		[0] Dimmable	[X] Telescope Rod (Specify) S-10: 7.6x, R-18: or 11x22; [FR-X] Fixed Rod		

SSL SPECIFICATIONS:
Light Source: Cree XP-L R3 Typical
LED Driver: Integral, Adaptive IC w/ Dim, Decoder
Dimming: TRIAC dimming to ~10% Typical [D]
Current Protection: Surge Suppression w/ Auto-Reset
Over-Temp Protection: On-board monitor w/ auto-dimming
Source Compatibility: Electronic or Magnetic 12-15v
Current Rating: 300ma (3.6 Amps) Typical
LED Life (L70): 50,000 hours average
Input Voltage: 10 to 15V AC, Universal
Power Factor: >0.90 Typical

8 TYPE W02LANDSCAPE LUMINAIRE LT1.4 NOT TO SCALE

NOTE: THE LUMINAIRES SHOWN ARE FOR REFERENCE ONLY TO ESTABLISH THE BASIS OF DESIGN WITH RESPECT TO LUMEN OUTPUT, DISTRIBUTION, AND COLOR TEMPERATURE. EXACT FITURE SPECIFICATIONS WILL BE CHOSEN BY THE BUILDERS.

REVISIONS

NO	DESCRIPTION	DATE
2	STAFF COMMENTS	06/11/16
3	STAFF COMMENTS	06/14/16

VESTED RIGHTS
THIS PLAN CONSTITUTES A SITE SPECIFIC DEVELOPMENT PLAN AS DEFINES IN SECTION 24-68-101, ET SEQ., C.R.S., AND CHAPTER 16 OF THE SUPERIOR MUNICIPAL CODE, AVAILABLE AT THE SUPERIOR TOWN HALL, 124 EAST COAL CREEK DRIVE, SUPERIOR, COLORADO.

DESIGNED BY: AS DATE: June 10, 2016
DRAWN BY: TB SCALE: 1/4"=1'-0"
CHECKED BY: GA
JOB NO.: 228.001.04
DWG NAME: STC\FDP2-FDP3\LIGHTING\PLANS.DWG

ASHBERY PEDESTRIAN

Product Data Sheet

landscape forms



Ashbery is a trio of lights that brings together advanced LED technology and optics with an homage to traditional style lights that have a special place in the American lexicon. The pedestrian light is offered in 12', 14' and 16' heights and is ideal for campuses, parks and plazas, helping to create public spaces that are usable 24 hours a day. Options include single luminaires or a double-mount option for dual luminaires, one on either side of the pole. Patent-pending glare control requires less eye adaptation, enabling lower light levels and lower energy use with excellent visual acuity, while sconce-mounted luminaires can be retrofitted in the field. Cast aluminum parts in a full color palette are finished with Landscape Forms proprietary Pongard IP HAPS, VOC, lead-free polyester powdercoat.

Lighting Facts®

Landscape Forms is committed to the development of energy efficient lighting. We participate in the Department of Energy Lighting Facts® label program. This activity is voluntary but helps consumers evaluate the multitude of products on the market today. The Lighting Facts® label provides a quick but comprehensive summary of luminaire performance as measured by the EISA LM-79 photometric test standard for solid state lighting.

Electrical

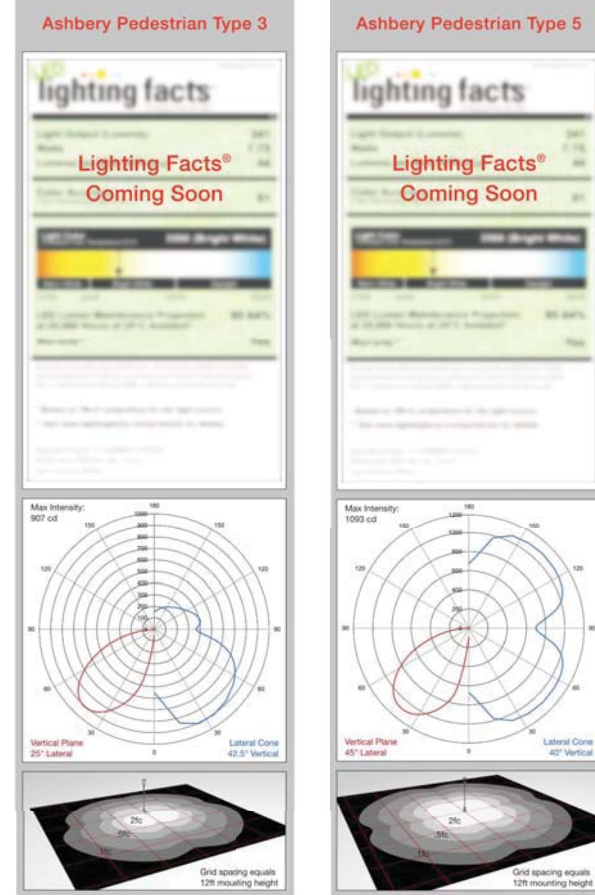
Surge protected 100V-277V 50/60 Hz, Class 2 LED dimmable driver. LED cartridge with weatherproof quick-disconnect provides ease of installation and serviceability. Ashbery Pedestrian ships pre-wired.

Pedestrian Type 3

Photometrics:
EISA Type 3 Distribution
Lumen Output (lumens): 2150
Watts: 47
Luminaire Efficacy: 46 lm/w
CRI (Color Accuracy): 84
CCT: 3000K, 3500K, 4000K
BUG Rating: B1 U1 G1
Components:
Lamp: 6 Cree HiPower LEDs
L70: >100,000 hrs
Drive Current: 1000mA
Optic: Clear Optics
Lens: Diffused Acrylic®
Power Supply: 100V-277V
LED Driver: 18V PLED-50W
Dimmable: 0-10V
IP Rating: IP66 for LED Cartridge

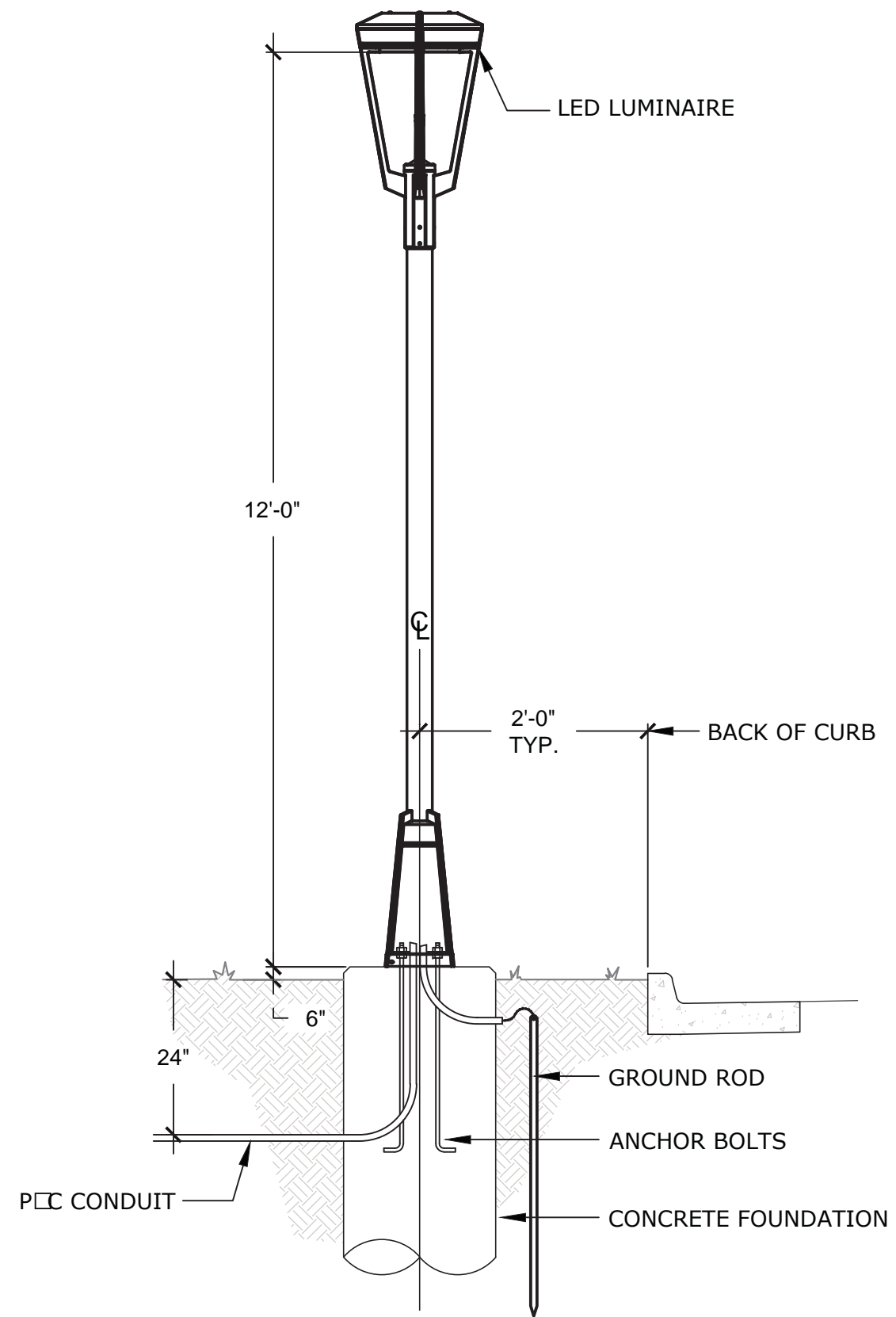
Pedestrian Type 5

Photometrics:
EISA Type 5 Distribution
Lumen Output (lumens): 4100
Watts: 82.5
Luminaire Efficacy: 49.5 lm/w
CRI (Color Accuracy): 84
CCT: 3000K, 3500K, 4000K
BUG Rating: B2 U1 G1
Components:
Lamp: 12 Cree HiPower LEDs
L70: >100,000 hrs
Drive Current: 1000mA
Optic: Clear Optics
Lens: Diffused Acrylic®
Power Supply: 100V-277V
LED Driver: 18V PLED-100W
Dimmable: 0-10V
IP Rating: IP66 for LED Cartridge



page 1 of 4

Landscape Forms, Inc. | 800.521.2546 | F 269.381.3450 | 7800 E. Michigan Ave., Kalamazoo, MI 49008



2 TYPICAL DRICE LIGHT
NOT TO SCALE

1 TYPE G03 PEDESTRIAN DRIVEWAY LUMINAIRE
NOT TO SCALE

CLANTON & ASSOCIATES
LIGHTING DESIGN AND ENGINEERING

STC METROPOLITAN DISTRICT

141 UNION BLDG., SUITE 150
LAKEWOOD, CO 80228

SUPERIOR TOWN CENTER
FDP 2 (BLOCK 13) & FDP 3 PHASE 1 (PARTIAL BLOCK 25)
SUPERIOR, COLORADO

NO.	DESCRIPTION	DATE
2	STAFF COMMENTS	06/01/16
3	STAFF COMMENTS	06/14/16

VESTED RIGHTS
THIS PLAN CONSTITUTES A SITE SPECIFIC DEVELOPMENT PLAN AS DEFINES IN SECTION 24-68-101, ET SEQ., C.R.S., AND CHAPTER 16 OF THE SUPERIOR MUNICIPAL CODE, AVAILABLE AT THE SUPERIOR TOWN HALL, 124 EAST COAL CREEK DRIVE, SUPERIOR, COLORADO.

DESIGNED BY: AS DATE: June 10, 2016
DRAWN BY: TB SCALE: 1"=20'
CHECKED BY: GA
JOB NO.: 228.001.04
DWG NAME: STC\PH2-FDP2\LIGHTING\PLANS.DWG

LIGHTING DETAILS

SHEET:
LT1.5

NOTE:
THE LUMINAIRES SHOWN ARE FOR REFERENCE ONLY TO ESTABLISH THE BASIS OF DESIGN WITH RESPECT TO LUMEN OUTPUT, DISTRIBUTION, AND COLOR TEMPERATURE. EXACT FIGURE SPECIFICATIONS WILL BE CHOSEN BY THE BUILDERS.



BUILDING TYPE INFORMATION:

	TYPE 3A	TYPE 3B	TYPE 4	TYPE 5
MAX HEIGHT:	55' - 4 STORIES	55' - 4 STORIES	55' - 4 STORIES	55' - 4 STORIES
ACTUAL HEIGHT:	49'-3" - 4 STORIES	49'-3" - 4 STORIES	49'-3" - 4 STORIES	49'-3" - 4 STORIES
BLDG FOOTPRINT:	2627 SF	2590 SF	3435 SF	4350 SF
BUILDING LOT AREA:	3144 SF (3 LOTS)	3100 SF (3 LOTS)	4103 SF (4 LOTS)	5196 SF (5 LOTS)
LOT COVERAGE:	83.5%	83.5%	83.7%	83.7%
TOTAL FLOOR AREA:	6555 SF (3 UNITS)	7053 SF (3 UNITS)	8299 SF (4 UNITS)	10805 SF (5 UNITS)
UNIT MIX:	4, 1, 3	4, 2, 4	3, 1, 2, 3	3, 1, 2, 3, 4
MINIMUM PROPOSED SETBACKS:				
FRONT	2'-6"	3'-0"	2'-6"	2'-6"
SIDE	0'-0"	0'-0"	0'-0"	0'-0"
SIDE AT CORNER	5'-0"	5'-0"	5'-0"	5'-0"
BACK	3'-0"	3'-0"	3'-0"	3'-0"

UNIT INFORMATION: RESIDENTIAL TYPOLOGY J-TOWNHOMES (1200-2500sf):

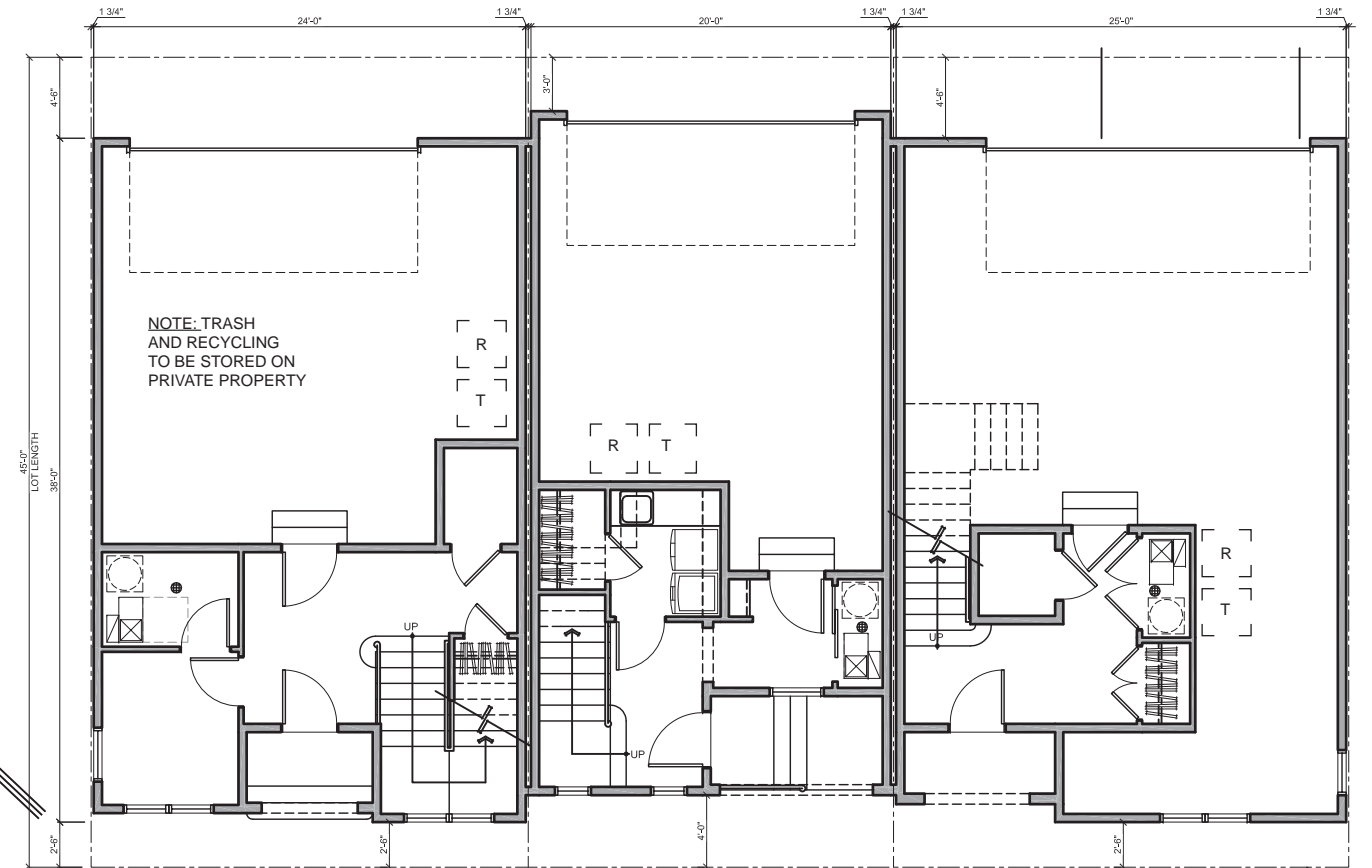
	UNIT 1	UNIT 2	UNIT 3	UNIT 4
UNIT AREA:	1840 SF	2041 SF	2209 SF	2498 SF
UNIT FOOTPRINT:	771 SF	771 SF	947 SF	910 SF
LOT AREA AND COVERAGE:	914 SF (84.3%)	914 SF (84.3%)	1139 SF (83.1%)	1094 SF (83.1%)
CORNER LOT AREA:	N/A	N/A	1357 SF (69.7%)	1402 SF (64.9%)
UNIT COUNT:	11	11	18	15

NOTE: TRASH AND RECYCLING BINS SHALL NOT BE PLACED IN PUBLIC VIEW, WITH THE EXCEPTION OF SERVICE DAYS.

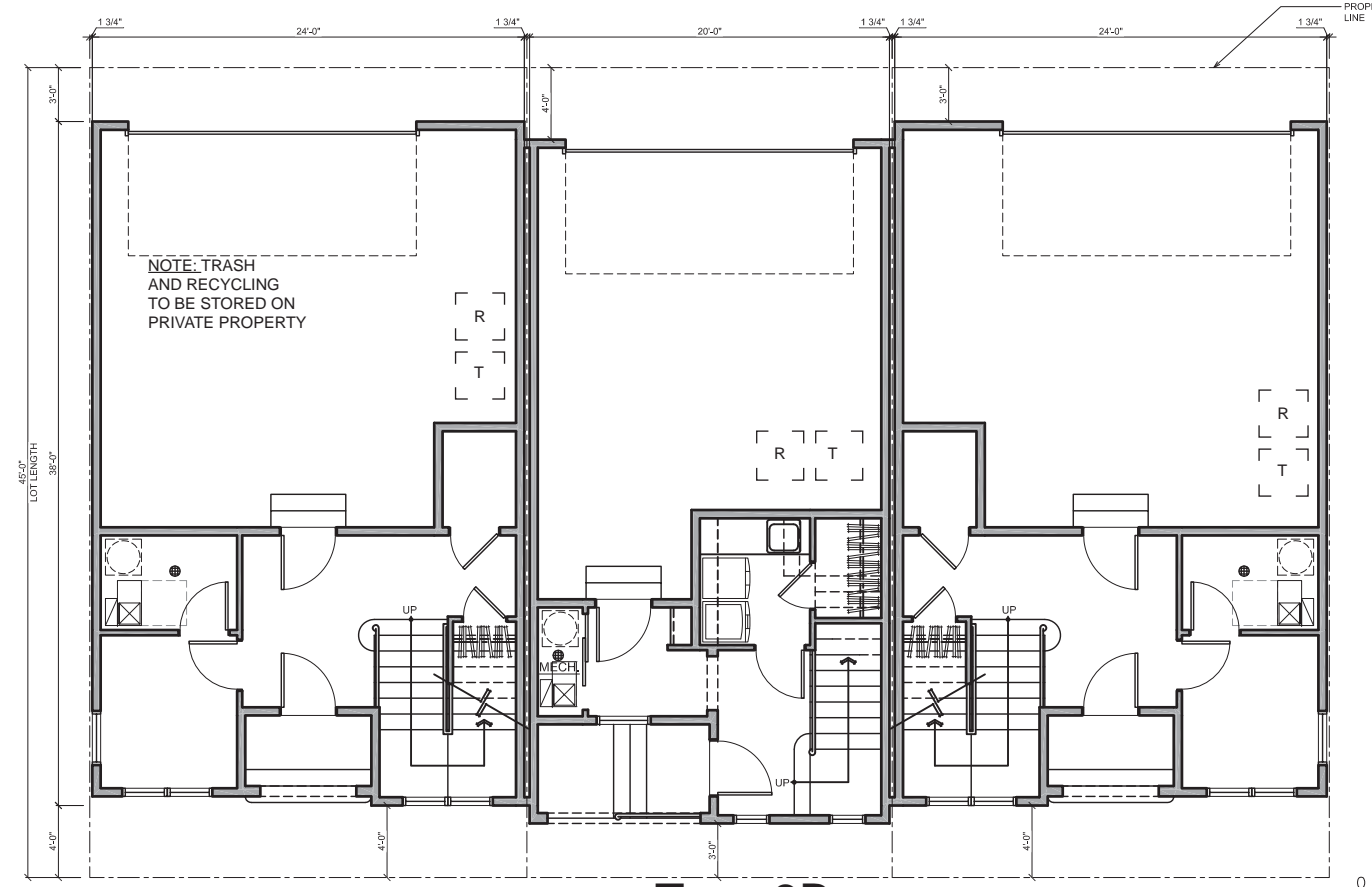
SITE LEGEND:

- FDP LIMIT LINES
- WONDERLAND HOMES LOT COLOR SCHEME 1
- WONDERLAND HOMES LOT COLOR SCHEME 2
- WONDERLAND HOMES LOT COLOR SCHEME 3
- WONDERLAND HOMES LOT COLOR SCHEME 4
- PRIVATE LANE

SEE SHEET AW.26 FOR COLOR SCHEME DETAILS



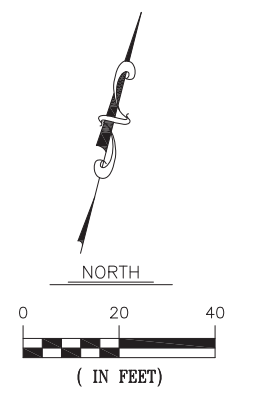
Type 3A



Type 3B

Typical Setback Conditions

NOTE: DIMENSIONS NOTED WITHIN THE TYPICAL SETBACK CONDITION INSERTS SHOW TYPICAL SETBACK CONDITIONS. BUILDING FOOTPRINTS VARY ACROSS THE SITE WITHIN THE MINIMUM PROPOSED SETBACK CONDITIONS, WHICH ARE REPRESENTED IN THE BUILDING TYPE INFORMATION ABOVE.



DTJ DESIGN
3101 Iris Avenue, Suite 130
Boulder, Colorado 80301
T 303.443.7533
F 303.443.7534
www.dtjdesign.com

WONDERLAND HOMES
it's about character...

STC METROPOLITAN DISTRICT #2
141 UNION BLVD., STE 150
LAKEWOOD, CO 80228

SUPERIOR TOWN CENTER
FDP 2 (BLOCK 13) & FDP 3 PHASE 1 (PARTIAL BLOCK 25)
SUPERIOR, COLORADO

REVISIONS

NO.	DESCRIPTION	DATE
1	STAFF COMMENTS	05/18/16
2	STAFF COMMENTS	06/01/16
3	STAFF COMMENTS	06/14/16

VESTED RIGHTS
THIS PLAN CONSTITUTES A SITE SPECIFIC DEVELOPMENT PLAN AS DEFINES IN SECTION 24-68-101, ET SEQ., C.R.S., AND CHAPTER 16 OF THE SUPERIOR MUNICIPAL CODE, AVAILABLE AT THE SUPERIOR TOWN HALL, 124 EAST COAL CREEK DRIVE, SUPERIOR, COLORADO.

DESIGNED BY: SH DATE: 05/18/2016
DRAWN BY: SHRM SCALE:
CHECKED BY: SH.DW
JOB NO.: 2015.058
DWG NAME:

WONDERLAND HOMES
SITE PLAN

SHEET: **AW.01**



DTJ DESIGN
 3101 Iris Avenue, Suite 130
 Boulder, Colorado 80301
 T 303.443.7533
 F 303.443.7534
 www.dtjdesign.com



STC METROPOLITAN DISTRICT #2
 141 UNION BLVD., STE 150
 LAKEWOOD, CO 80228

SUPERIOR TOWN CENTER
 FDP 2 (BLOCK 13) & FDP 3 PHASE 1 (PARTIAL BLOCK 25)
SUPERIOR, COLORADO

REVISIONS		
NO.	DESCRIPTION	DATE
1	STAFF COMMENTS	05/18/16
2	STAFF COMMENTS	06/01/16
3	STAFF COMMENTS	06/14/16

VESTED RIGHTS
 THIS PLAN CONSTITUTES A SITE SPECIFIC DEVELOPMENT PLAN AS DEFINES IN SECTION 24-68-101, ET SEQ., C.R.S., AND CHAPTER 16 OF THE SUPERIOR MUNICIPAL CODE, AVAILABLE AT THE SUPERIOR TOWN HALL, 124 EAST COAL CREEK DRIVE, SUPERIOR, COLORADO.

DESIGNED BY: SH DATE: 05/18/2016
 DRAWN BY: SHRM SCALE:
 CHECKED BY: SH,DW
 JOB NO.: 2015.058
 DWG NAME:

BUILDING TYPE 3A FRONT ELEVATION

SHEET: **AW.02**



NOTES:

1. Elevations currently shown on flat lot condition. Individual units within each building type may step as necessary per site grading.
2. See Sheet AW.26 for color scheme details.

Building Type 3A
 Front Elevation
 Example of Color Scheme 1





DTJ DESIGN

3101 Iris Avenue, Suite 130
Boulder, Colorado 80301
T 303.443.7533
F 303.443.7534
www.dtjdesign.com



WONDERLAND
HOMES
it's about character...

STC METROPOLITAN
DISTRICT #2

141 UNION BLVD., STE 150
LAKEWOOD, CO 80228

SUPERIOR TOWN CENTER
FDP 2 (BLOCK 13) & FDP 3 PHASE 1 (PARTIAL BLOCK 25)
SUPERIOR, COLORADO

49'-3" (APPROXIMATE AVERAGE GRADE/LOCATION VARIES)
MAX HEIGHT: 35'-0"

REVISIONS		
NO.	DESCRIPTION	DATE
1	STAFF COMMENTS	05/18/16
2	STAFF COMMENTS	06/01/16
3	STAFF COMMENTS	06/14/16

VESTED RIGHTS
THIS PLAN CONSTITUTES A SITE SPECIFIC DEVELOPMENT PLAN AS DEFINES IN SECTION 24-68-101, ET SEQ., C.R.S., AND CHAPTER 16 OF THE SUPERIOR MUNICIPAL CODE, AVAILABLE AT THE SUPERIOR TOWN HALL, 124 EAST COAL CREEK DRIVE, SUPERIOR, COLORADO.

DESIGNED BY: SH DATE: 05/18/2016
DRAWN BY: SHRM SCALE:
CHECKED BY: SHDW
JOB NO.: 2015.058
DWG NAME:

**BUILDING
TYPE 3A
SIDE
ELEVATIONS**

SHEET:
AW.03



Building Type 3A
Left Elevation
Example of Color Scheme 1

Building Type 3A
Right Elevation
Example of Color Scheme 1

