

Planting Quantities Analysis

Area	Specs	Specs	Specs	Specs	Total
Common Landscaping Area Filing 20	11.5	500,762	125	1,200	199
Stormwater R.O.W. (Colleton Filing 20)	6	12	6	12	6
Total	17.5	512,774	131	1,212	205

- Note:
- Refer to the final landscaping plan for detailed size and location of all planting materials.
 - Plant materials requirement per Rock Creek PDP are based on 1 tree and 10 shrubs per 4,000 S.F. of open space, 1 tree and 6 shrubs per 600 S.F. of aerial coverage (ACU); and 1 tree and 2 shrubs per 600 S.F. of collector stormwater ROW.
 - Plant quantities are based on actual square foot calculations indicated in the table. The average calculations indicated are a guideline provided from the square footage and provided for additional information only.

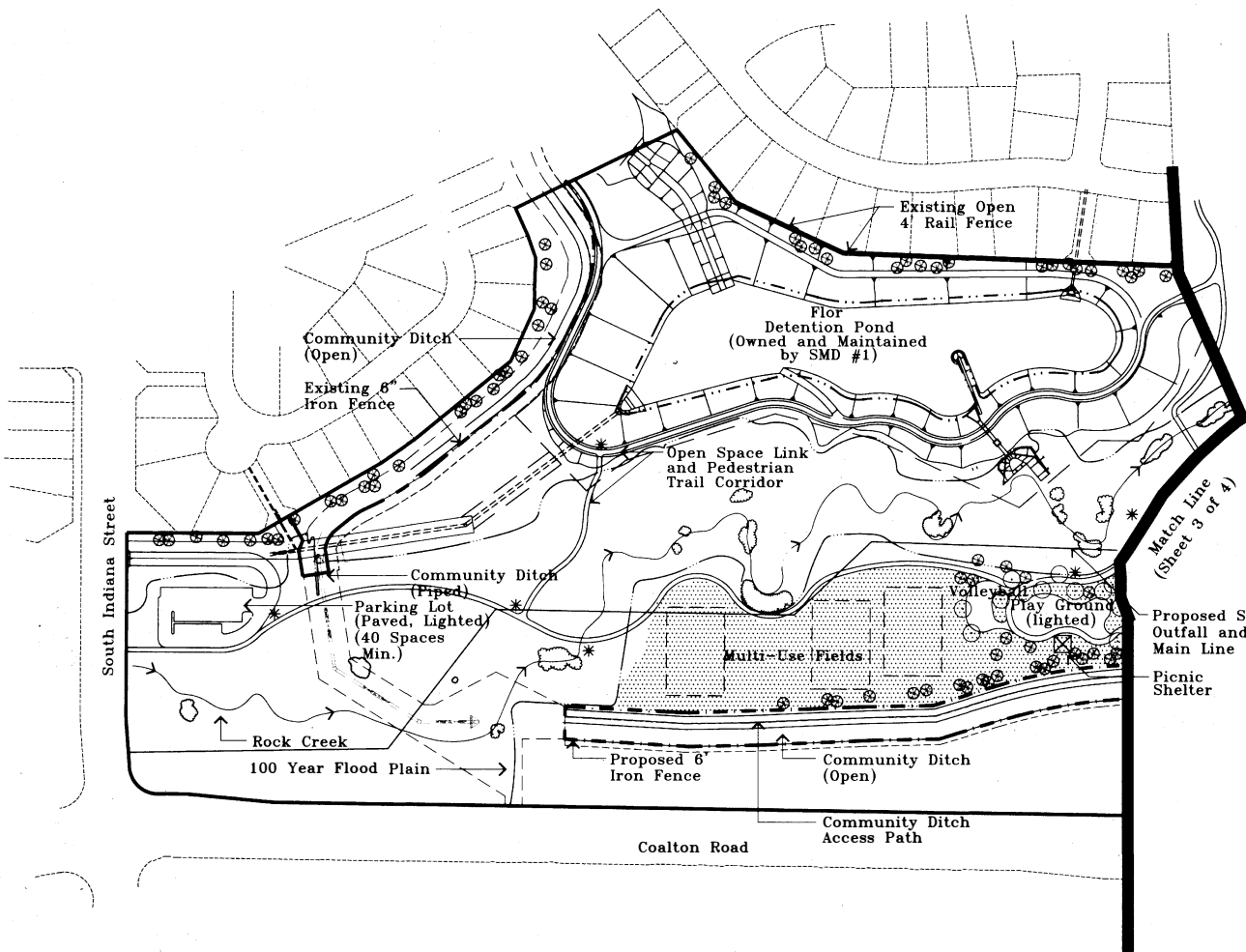
- Note:
- Trash cans to be located in picnic areas, play areas and along pathways where appropriate.
 - Bathroom/Concession building to be constructed to accommodate second floor.

ROCK CREEK

Final Plat Site Plan No. 21

Amendment

Rock Creek Ranch Filing 20



Plant List

COMMON NAME BOTANIC NAME

Evergreen Trees (Minimum Size 6" Ht.)

Fir, Douglas	<i>Pseudotsuga menziesii</i>
Fir, White	<i>Abies concolor</i>
Juniper, Common	<i>Juniperus horizontalis</i>
Juniper, Rocky Mountain	<i>Juniperus scopulorum</i>
Yew, Australian	<i>Taxus nigra</i>
Yew, Lambert	<i>Taxus floridana</i>
Yew, Plant	<i>Taxus canadensis</i>
Yew, Scotch	<i>Taxus sylvatica</i>
Yew, Korean	<i>Taxus koraiensis</i>

Shrub Trees (Minimum Size 2" Cal.)

Ash, Autumn Purple	<i>Fraxinus americana 'Autumn Purple'</i>
Ash, Marshall's Seedling	<i>Fraxinus pennsylvanica 'Marshall's'</i>
Cottonwood, Laceleaf	<i>Populus alata</i>
Cottonwood, Narrowleaf	<i>Populus angustifolia</i>
Cottonwood, Plains	<i>Populus nigra 'Cottonwood'</i>
Hackberry	<i>Celtis occidentalis</i>
Honeylocust, Thorns	<i>Gleditsia triacanthos 'Inermis'</i>
Kentucky Coffeetree	<i>Gymnocladia dioica</i>
Linden, Littleleaf	<i>Tilia cordata</i>
Maple, Norway	<i>Acer glaberrimum</i>
Oak, Burr	<i>Quercus macrocarpa</i>
Oak, English	<i>Quercus robur</i>
Oak, Northern Red	<i>Quercus rubra</i>
Oak, White	<i>Quercus alba</i>
Poplar, Lombardy	<i>Populus nigra</i>
Poplar, White	<i>Populus alba</i>
Witcham, Cuticle	<i>Celtis occidentalis</i>
Willow	<i>Salix sp.</i>

Ornamental Trees (Minimum Size 1 1/2" Cal.)

Aspen	<i>Populus tremuloides</i>
Alder, Rocky Mountain	<i>Alnus incana</i>
Birch, Rocky Mountain	<i>Betula fontinalis</i>
Chokeberry	<i>Fraxinus sp.</i>
Cornus	<i>Sida sp.</i>
Headbroom	<i>Crataegus sp.</i>
Maple, Amur	<i>Acer glaberrimum</i>
Olive, Russian	<i>Elaeagnus angustifolia</i>
Pear, Bradford	<i>Pyrus bairdiana</i>
Servitoria	<i>Amelanchier canadensis</i>

Shrubs (Minimum Size 5 Gal. Container)

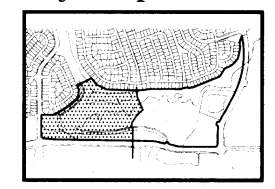
Burberry	<i>Berberis sp.</i>
Black Chokeberry	<i>Amelanchier sp.</i>
Blue Mist Spruce	<i>Caryopteris monnina</i>
Budding	<i>Platanus occidentalis</i>
Burning Bush	<i>Elaeagnus alata</i>
Chokeberry and Flowering Almond	<i>Fraxinus sp.</i>
Cornus	<i>Syringa sp.</i>
Cornus sp.	<i>Cornus sp.</i>
Dogwood	<i>Fraxinus sp.</i>
Forsythia	<i>Lonicera sp.</i>
Honeysuckle	<i>Syringa sp.</i>
Juniper	<i>Philadelphus sp.</i>
Lilac	<i>Syringa sp.</i>
Mockorange	<i>Potentilla sp.</i>
Potentilla	<i>Potentilla sp.</i>
Rock Spire	<i>Spiraea sp.</i>
Rocky Mountain Maple	<i>Acer glaberrimum</i>
Sand Rose	<i>Rosa sp.</i>
Silver Buffaloberry	<i>Shepherdia argentea</i>
Spiraea	<i>Spiraea sp.</i>
Sweet	<i>Abies sp.</i>
Viburnum	<i>Viburnum sp.</i>
Willow	<i>Salix sp.</i>

Ground Covers/Perennials (Minimum Size 1 Gal. Container)
To Be Determined

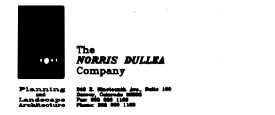
Legend

- Final Plat Site Boundary
- 4' - 8' Concrete Walk/Trail
- Deciduous Trees
- Evergreen Trees
- Irrigated Turf Areas (all other areas will be served by drip irrigation)
- 6' Iron Fence
- Ends of Future Lighting Conduit Runs (Conduit By Applicant, Lighting By Town) Conduit Installed Parallel To Walkway

Key Map



Scale: 1" = 200'
Date: 2/16/2016
Sheet 2 of 4

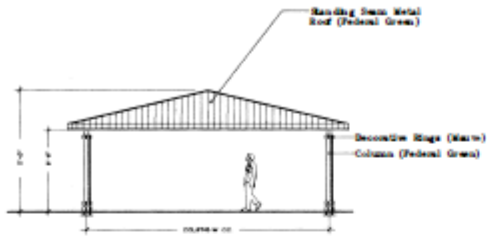


ROCK CREEK

Final Plat Site Plan No. 21

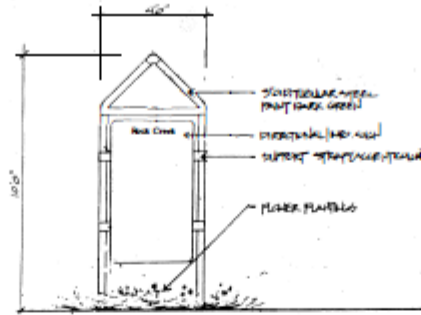
Amendment

Rock Creek Ranch Filing 20

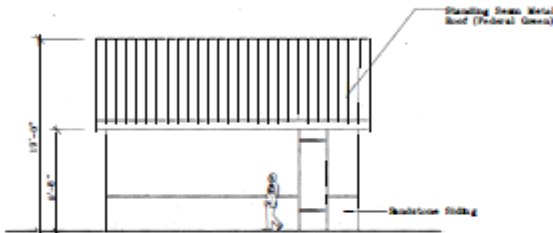


Note: All paint and stone colors are to match colors currently used at Rock Creek Ranch.

Picnic Shelter
N.T.S.

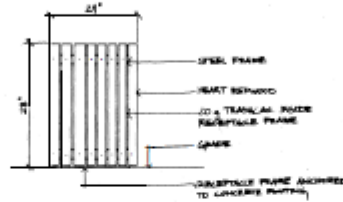


Information Sign
N.T.S.

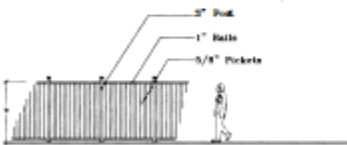


Note: All paint and stone colors are to match colors currently used at Rock Creek Ranch. Concessions area will be a 100 sq. ft. Compliant for support a professional event floor.

Bathroom And Concessions Building
N.T.S.



Typical Liter Receptacle
N.T.S.

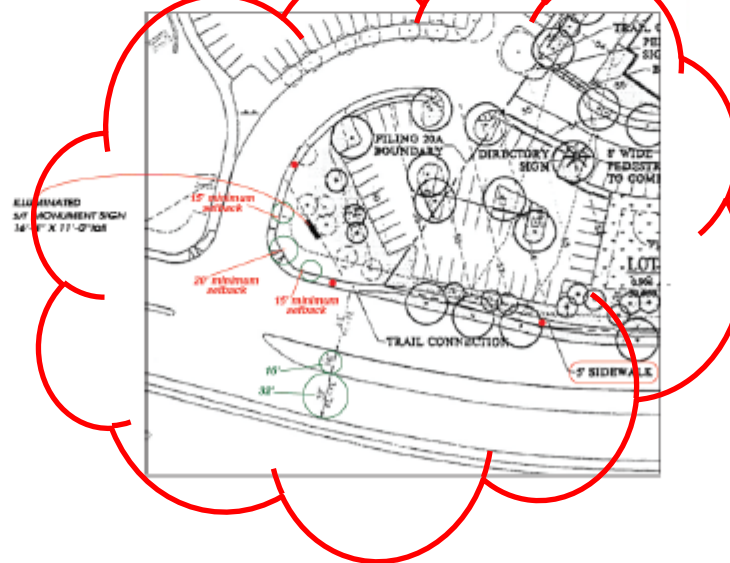


6' Iron Fence
N.T.S.



Notes:

- 1) The Amendment request is limited to the addition of the 16.3' wide x 11' tall monument shown above.
- 2) The location of this sign (east of access drive from Coalton) is shown via illustration to the left. The sign will be set back a minimum of 15' from both the Coalton ROW and the access drive.



Date: 2/16/18
Sheet 4 of 4

