

- The Spicer-Carlson (6.1) property has a reasonably contiguous ecological type, with the exception of a biologically significant pond on the west side of the property. The Spicer-Carlson property also has the fourth largest acreage extent of all properties studied and an impressive viewshed.
- The Zaharias property (5.9) has a less favorable (less diverse) contiguous Weedy/Disturbed ecological type. The habitat and species diversity of the property is, however, enhanced by a 1.5-acre cattail/willow/cottonwood wetland area.

The other remaining properties receiving a “Moderate” rating include the Bolejack (5.7), 76<sup>th</sup> Street (5.5), and Arsenault properties (5.3). These properties are slightly less desirable due to smaller property sizes, generally less water availability, and lower habitat diversity. Of these three properties, the Bolejack property had the highest OHQR rating because it has two small wetland areas. Steep terrain, lack of water on site, and limited scenic quality for the southern half of the property limit the recreational use and value of this property. The 76<sup>th</sup> Street Property has a biologically significant pond and wetland area in the northern half of the property. The southern half of the property is moderately to heavily impacted by human activity and would require substantial financial investment to clean up debris piles and old vehicles, and find a suitable use or disposal of existing houses on the property. Various biological and human-disturbance factors cause the Arsenault property to have the lowest “Moderate” rating. The property, however, has a high scenic quality at the elevated south end of the site, offering views of Old Town Superior and the mountains. There is a developed water resource adjacent to the south end this property in the form of a concrete-lined irrigation canal. Access to and usage of this canal for the purposes of making habitat improvements to the Arsenault property would be largely dependent on the acquisition of senior water rights.

Eight of the seventeen properties evaluated earned a “Low” habitat rating. These properties include: Ridge II, Horizon, Rogers Farm, Weinstein, Richmond, Aweida, Madson, and Steward. Compared to the “High” and “Moderate” properties, these properties have smaller acreages, with lower biological quality (i.e., presence of various plant species listed as noxious weeds by the State of Colorado Department of Agriculture, higher level of or close proximity to of human disturbance, and a general lack of water resources) and lower aesthetic value. These properties may require more enhancement efforts and/or on-going maintenance upon acquisition, including higher financial investment associated with these activities. For these “Low” rated properties, their OHQR value does not necessarily reflect their priority for acquisition. Only three properties in this classification are recommended for potential acquisition for open space. Properties recommended for acquisition include Horizon (4.4), Rogers Farm (4.3) and Weinstein (4.3). Of these three properties, Rogers Farm should be acquired first to preserve the biological integrity of the Coal Creek corridor, despite the degradation present over much of the rest of the property. The Horizon property should then be acquired to preserve the pond on the eastern side of the property, adjacent to Flatirons Crossing Mall. The water resources on Rogers Farm and Horizon are important to numerous wildlife species. These water resources can be manipulated to improve wildlife habitat on these properties after more crucial enhancement steps have been taken. The Weinstein property should then be considered for acquisition as this property serves as a connection between two sizeable areas of wildlife habitat on the Spicer-Carlson and Zaharias properties. The Ridge II (4.5) and Richmond (4.2) properties are only marginally recommended for

acquisition due to a lack of biological features comprising significant habitat for any wildlife species. The usefulness of these properties is derived solely from their proximity to other undeveloped land properties owned by other entities. The Aweida (4.1), Madson (4.1) and Steward (3.7) properties are not generally recommended for open space acquisition based on the high level of human disturbance on these properties. There are two potential exceptions to this statement. The northwest corner of the Madson property adjacent to Coal Creek and the Ochsner property should be acquired to preserve the biological integrity of the Coal Creek corridor as it enters Old Town Superior. The other exception may include the southern half of the Aweida property, which is currently scheduled to remain as undeveloped open space.

Properties which contain floodplains may be considered by the Town to be more suitable for acquisition and open space designation, should private landowners be more willing to sell their properties based on the lower feasibility (i.e., risk of property loss, mandatory flood insurance requirement) for development within the floodplain.

### 3.3 BEST MANAGEMENT PRACTICES

After properties, or portions thereof have been acquired, SEI recommends four best management practices to the Town to ensure scenic opportunities, facilitate enjoyable recreational experiences, and foster a sense of public responsibility for local wildlife and their habitat. These suggestions are as follows:

1. **Acquire and protect properties along the Coal Creek and Rock Creek corridors** to preserve the biological integrity and connectivity of these areas as wildlife corridors. Properties with ponds and/or wetland areas sustaining or capable of sustaining fish, amphibians, reptiles and water-dependent bird species should then be acquired and protected.
2. **When feasible, acquire and protect large tracts of contiguous, quality habitat** to accommodate life history attributes for various wildlife species. These attributes include forage needs, proximity or arrangement of resources, home range and territory size, social structure, dispersal of young animals, genetic exchange within and among populations, and disease concerns, among others.
3. **No development within 100 yards of sensitive creek habitats** (primarily Coal Creek and Rock Creek) to allow wildlife species safe passage through and minimize potential conflicts with proposed protection corridors. Development should not be permitted within 50 yards of ponds or sensitive wetland areas. The purpose of this recommendation is two-fold. First the protection of wildlife species from human impacts (noise disturbance, pets, etc.) is important. Second, this buffer may also serve to minimize the risk of exposure to mosquitoes that carry the West Nile virus, a growing human health threat in Boulder County.
4. **Development impacting jurisdictional wetlands shall be mitigated for** according to the guidelines established by Section 404 of the Clean Water Act and the U.S. Army Corps of Engineers (as the regulating agency). Development should also be

done in consultation with wildlife professionals, especially the Colorado Division of Wildlife and the United States Fish and Wildlife Service to ensure compliance with all legal wildlife laws, such as the Migratory Bird Treaty Act, the Endangered Species Act, Title 33 within the Colorado Revised Statutes, and Colorado Division of Wildlife regulations.

5. **Creation of a public education program** that emphasizes the biological significance of developing habitat for and preserving native plant and wildlife species in the vicinity of the Town. A suitable example of this program is the National Wildlife Federation's Backyard Wildlife Habitat Program (2003). Informational kiosks could be built adjacent to proposed trails and/or open space trailheads to discuss the natural history of the Town and surrounding area and the importance of public stewardship of and responsibility for wildlife and other natural resources. This public education program should also discuss strategies to minimize human-urban wildlife conflicts (e.g., prairie dogs, raccoons, skunks, foxes, etc.). These guidelines are available from the Colorado Division of Wildlife.

#### 4.0 CONCLUSION

SEI conducted a wildlife assessment and developed a GIS database of wildlife information for 17 properties in the Town during the summer of 2003. This assessment resulted in identifying the Lastoka property as having the highest overall habitat quality rating. Nine properties were identified as having a "Moderate" overall habitat quality rating. Six of these properties are specifically recommended for open space designation (Ochsner, Biella-Menkick, Level 3, Verhey, Spicer-Carlson, and Zaharias).

The results of this report are designed to assist Town administrators in land use (open space designation, future zoning determinations, development review, etc.) and land acquisition decisions. The results of this study may be used whether the Town wishes to acquire entire properties via fee title, acquire portions of individual properties, acquire conservation easements for portions of properties, or subsidize private landowners for maintaining wildlife habitat.

The recent development of several large residential subdivisions and commercial areas in the Town, and nearby Flatirons Mall (to the east of the Town) have resulted in a dramatic increase in pressure to develop the remaining undeveloped properties in the Superior area. Local land values are near record levels, making the sale of long-held, family-owned properties more likely. The citizens and administrators of the Town have proactively identified the need to preserve open space and wildlife resources contained therein, before there is no longer the capacity to do so. More importantly, with the initiation and completion of this study, they have begun to facilitate this process.

## 5.0 REFERENCES

- Andrews, R. and R. Righter. 1992. Colorado birds: a reference to their distribution and habitat. Denver Museum of Natural History. Denver, CO.
- Boulder County. 2003. ArcView coverage for 100 year floodplain. Available from: [http://www.co.boulder.co.us/gis/downloads/dl\\_shapefiles.htm](http://www.co.boulder.co.us/gis/downloads/dl_shapefiles.htm). Boulder, CO.
- Colorado Department of Transportation. 2003. ArcView coverages for roads and hydrological features. Available from: [http://www.dot.state.co.us/App\\_DTD\\_DataAccess/GeoData/index.cfm?fuseaction=GeoDataMain&MenuType=GeoData](http://www.dot.state.co.us/App_DTD_DataAccess/GeoData/index.cfm?fuseaction=GeoDataMain&MenuType=GeoData). Denver, CO.
- Colorado Division of Wildlife. 2003. Natural Diversity Information Source. Wildlife species occurrence list for Boulder County, Colorado. [http://ndis.nrel.colostate.edu/aspresponse/spxbycnty\\_res.asp](http://ndis.nrel.colostate.edu/aspresponse/spxbycnty_res.asp). Denver, CO.
- Colorado Natural Heritage Program. 2003. CNHP potential conservation areas (PCAs) known from the vicinity of the Louisville Quad. Fort Collins, CO.
- Fitzgerald, J.P., C.A. Meaney and D.M. Armstrong. 1994. Mammals of Colorado. University Press of Colorado. Niwot, CO.
- Hammerson, G.A. 1999. Amphibians and reptiles in Colorado. University Press of Colorado. Niwot, CO.
- Kaempfer, W. 1998. 1997 Boulder County Winter Bird List. Available from: <http://www.geocities.com/RainForest/Vines/1410/boulderwin97.html>. Denver, CO.
- Kingery, H.E., editor. 1998. Colorado breeding bird atlas. Colorado Breeding Bird Atlas and Colorado Division of Wildlife. Denver, CO.
- Menough, D.L. 2003. Personal communication with Jennifer Dunn of Town of Superior. List of birds observed in the Superior vicinity during 2002 - 2003 Westminster, CO
- MapMart. 2003. Ortho-rectified aerial photograph of the Superior vicinity. Englewood, CO.
- National Wildlife Federation. 2003. Backyard Wildlife Habitat Program. Available at: <http://www.nwf.org/backyardwildlifehabitat/>. Reston, VA.
- Town of Superior. 2003a. Request for proposal for a wildlife survey and habitat evaluation. Superior, CO.
- Town of Superior. 2003b. Unpublished base drawing for the Rock Creek floodplain. Superior, CO

Town of Superior. 2003c. Town of Superior community newsletter (dated 7/15/03 – 8/15/03). Superior, CO

---

SMITH ENVIRONMENTAL, INC.

---

**APPENDIX A – List of wildlife species known or potentially occurring in the Superior vicinity and their estimated relative abundance**

<b>Group</b>	<b>Common Name</b>	<b>Scientific Name</b>	<b>Occurrence Status in the Superior area</b>	<b>Likely Relative Abundance in the Superior area</b>
Amphibians	Bullfrog	<i>Rana catesbeiana</i>	Likely to occur	Common
Amphibians	Great Plains Toad	<i>Bufo cognatus</i>	May occur	Rare
Amphibians	Northern Leopard Frog	<i>Rana pipiens</i>	Likely to occur	Uncommon *State species of special concern
Amphibians	Plains Spadefoot	<i>Spea bombifrons</i>	Likely to occur	Uncommon
Amphibians	Tiger Salamander	<i>Ambystoma tigrinum</i>	Likely to occur	Common
Amphibians	Western Chorus Frog	<i>Pseudacris triseriata</i>	Likely to occur	Uncommon
Amphibians	Woodhouse's Toad	<i>Bufo woodhousii</i>	Likely to occur	Common
Reptiles	Common Garter Snake	<i>Thamnophis sirtalis</i>	Known to occur	Common *State species of special concern
Reptiles	Fence Lizard	<i>Sceloporus undulatus</i>	Likely to occur	Common
Reptiles	Gopher Snake/Bullsnake	<i>Pituophis catenifer</i>	Known to occur	Common
Reptiles	Lined Snake	<i>Tropidoclonion lineatum</i>	May occur	Rare
Reptiles	Milk Snake	<i>Lampropeltis triangulum</i>	Likely to occur	Rare
Reptiles	Northern Water Snake	<i>Nerodia sipedon</i>	May occur	Uncommon
Reptiles	Painted Turtle	<i>Chrysemys picta</i>	Known to occur	Fairly Common
Reptiles	Plains Black-headed Snake	<i>Tantilla nigriceps</i>	May occur	Rare

Reptiles	Plains Garter Snake	<i>Thamnophis radix</i>	Known to occur	Common
Reptiles	Racer	<i>Coluber constrictor</i>	Known to occur	Uncommon - Sparsely Common
Reptiles	Short-horned Lizard	<i>Phrynosoma hernandesi</i>	May occur	Uncommon
Reptiles	Six-lined Racrunner	<i>Cnemidophorus sexlineatus</i>	May occur	Uncommon
Reptiles	Smooth Green Snake	<i>Liochlorophis vernalis</i>	May occur	Rare
Reptiles	Snapping Turtle	<i>Chelydra serpentina</i>	May occur	Uncommon
Reptiles	Western Rattlesnake	<i>Crotalus viridis</i>	Known to occur	Fairly Common
Reptiles	Western Terrestrial Garter Snake	<i>Thamnophis elegans</i>	Known to occur	Common
Birds	American Avocet	<i>Recurvirostra americana</i>	Known to occur	Fairly Common
Birds	American Bittern	<i>Botaurus lentiginosus</i>	Known to occur	Rare
Birds	American Coot	<i>Fulica americana</i>	Known to occur	Fairly Common
Birds	American Crow	<i>Corvus brachyrhynchos</i>	Known to occur	Common
Birds	American Dipper	<i>Cinclus mexicanus</i>	May occur	Uncommon
Birds	American Golden Plover	<i>Pluvialis dominica</i>	May occur	Very Rare - Rare
Birds	American Goldfinch	<i>Carduelis tristis</i>	Known to occur	Common
Birds	American Kestrel	<i>Falco sparverius</i>	Known to occur	Fairly Common
Birds	American Pipit	<i>Anthus rubescens</i>	May occur	Uncommon
Birds	American Redstart	<i>Setophaga ruticilla</i>	May occur	Rare
Birds	American Robin	<i>Turdus migratorius</i>	Known to occur	Common
Birds	American Tree Sparrow	<i>Spizella arborea</i>	Known to occur	Fairly Common



Birds	American White Pelican	<i>Pelecanus erythrorhynchos</i>	Known to occur	Fairly Common *State species of special concern
Birds	American Wigeon	<i>Anas americana</i>	Known to occur	Uncommon
Birds	Ash-throated Flycatcher	<i>Myiarchus cinerascens</i>	May occur	Rare
Birds	Baird's Sandpiper	<i>Calidris bairdii</i>	May occur	Uncommon
Birds	Bald Eagle	<i>Haliaeetus leucocephalus</i>	Known to occur	Uncommon * Federally-threatened species
Birds	Baltimore Oriole	<i>Icterus galbula</i>	May occur	Rare
Birds	Band-tailed Pigeon	<i>Columba fasciata</i>	May occur	Uncommon
Birds	Bank Swallow	<i>Riparia riparia</i>	Likely to occur	Common
Birds	Barn Owl	<i>Tyto alba</i>	May occur	Rare
Birds	Barn Swallow	<i>Hirundo rustica</i>	Known to occur	Abundant
Birds	Barrow's Goldeneye	<i>Bucephala islandica</i>	May occur	Rare
Birds	Belted Kingfisher	<i>Ceryle alcyon</i>	Likely to occur	Fairly Common
Birds	Bewick's Wren	<i>Thryomanes bewickii</i>	May occur	Very Rare
Birds	Black Tern	<i>Chlidonias niger</i>	May occur	Rare
Birds	Black-and-white Warbler	<i>Mniotilta varia</i>	May occur	Casual - Rare
Birds	Black-bellied Plover	<i>Pluvialis squatarola</i>	May occur	Uncommon
Birds	Black-billed Cuckoo	<i>Coccyzus erythrophthalmus</i>	May occur	Rare
Birds	Black-billed Magpie	<i>Pica pica</i>	Known to occur	Common
Birds	Black-capped Chickadee	<i>Poecile atricapillus</i>	Known to occur	Common
Birds	Black-crowned Night-Heron	<i>Nycticorax nycticorax</i>	Known to occur	Fairly Common

Birds	Black-headed Grosbeak	<i>Pheucticus melanocephalus</i>	May occur	Uncommon
Birds	Black-necked Stilt	<i>Himantopus mexicanus</i>	May occur	Rare
Birds	Blackpoll Warbler	<i>Dendroica striata</i>	May occur	Rare - Uncommon
Birds	Black-throated Gray Warbler	<i>Dendroica nigrescens</i>	May occur	Rare
Birds	Black-throated Sparrow	<i>Amphispiza bilineata</i>	May occur	Very Rare
Birds	Blue Grosbeak	<i>Guiraca caerulea</i>	Likely to occur	Uncommon
Birds	Blue Jay	<i>Cyanocitta cristata</i>	Known to occur	Fairly Common
Birds	Blue-gray Gnatcatcher	<i>Poliophtila caerulea</i>	May occur	Rare
Birds	Blue-winged Teal	<i>Anas discors</i>	Known to occur	Fairly Common
Birds	Bobolink	<i>Dolichonyx oryzivorus</i>	Likely to occur	Uncommon
Birds	Bohemian Waxwing	<i>Bombycilla garrulus</i>	May occur	Rare
Birds	Bonaparte's Gull	<i>Larus philadelphia</i>	May occur	Rare
Birds	Brewer's Blackbird	<i>Euphagus cyanocephalus</i>	Likely to occur	Fairly Common
Birds	Brewer's Sparrow	<i>Spizella breweri</i>	May occur	Uncommon
Birds	Broad-tailed Hummingbird	<i>Selasphorus platycercus</i>	Known to occur	Uncommon
Birds	Broad-winged Hawk	<i>Buteo platypterus</i>	May occur	Rare
Birds	Brown Creeper	<i>Certhia americana</i>	May occur	Uncommon
Birds	Brown Thrasher	<i>Toxostoma rufum</i>	May occur	Very Rare
Birds	Brown-headed Cowbird	<i>Molothrus ater</i>	Known to occur	Fairly Common
Birds	Bufflehead	<i>Bucephala albeola</i>	Known to occur	Uncommon
Birds	Bullock's Oriole	<i>Icterus bullockii</i>	Known to occur	Uncommon

SMITH ENVIRONMENTAL, INC.

Birds	Bushtit	<i>Psaltriparus minimus</i>	May occur	Uncommon
Birds	California Gull	<i>Larus californicus</i>	Known to occur	Fairly Common
Birds	Calliope Hummingbird	<i>Stellula calliope</i>	May occur	Very Rare
Birds	Canada Goose	<i>Branta canadensis</i>	Known to occur	Abundant
Birds	Canvasback	<i>Aythya valisineria</i>	May occur	Rare
Birds	Carolina Wren	<i>Thryothorus ludovicianus</i>	May occur	Very Rare
Birds	Cattle Egret	<i>Bubulcus ibis</i>	Known to occur	Rare
Birds	Cedar Waxwing	<i>Bombycilla cedrorum</i>	May occur	Rare
Birds	Chestnut-collared Longspur	<i>Calcarius ornatus</i>	May occur	Rare
Birds	Chimney Swift	<i>Chaetura pelagica</i>	Likely to occur	Fairly Common
Birds	Chipping Sparrow	<i>Spizella passerina</i>	Known to occur	Common
Birds	Cinnamon Teal	<i>Anas cyanoptera</i>	Known to occur	Fairly Common
Birds	Clark's Grebe	<i>Aechmophorus clarkii</i>	May occur	Rare
Birds	Clark's Nutcracker	<i>Nucifraga columbiana</i>	May occur	Rare
Birds	Clay-colored Sparrow	<i>Spizella pallida</i>	May occur	Rare
Birds	Cliff Swallow	<i>Petrochelidon pyrrhonota</i>	Known to occur	Abundant
Birds	Common Goldeneye	<i>Bucephala clangula</i>	Known to occur	Uncommon
Birds	Common Grackle	<i>Quiscalus quiscula</i>	Known to occur	Abundant
Birds	Common Loon	<i>Gavia immer</i>	May occur	Rare
Birds	Common	<i>Mergus merganser</i>	May occur	Uncommon

	Merganser			
Birds	Common Nighthawk	<i>Chordeiles minor</i>	Known to occur	Fairly Common
Birds	Common Poorwill	<i>Phalaenoptilus nuttallii</i>	May occur	Uncommon
Birds	Common Raven	<i>Corvus corax</i>	May occur	Uncommon
Birds	Common Redpoll	<i>Carduelis flammea</i>	May occur	Rare
Birds	Common Snipe	<i>Gallinago gallinago</i>	May occur	Uncommon
Birds	Common Tern	<i>Sterna hirundo</i>	May occur	Rare
Birds	Common Yellowthroat	<i>Geothlypis trichas</i>	Likely to occur	Fairly Common
Birds	Cooper's Hawk	<i>Accipiter cooperii</i>	Likely to occur	Uncommon
Birds	Cordilleran Flycatcher	<i>Empidonax occidentalis</i>	May occur	Uncommon
Birds	Dark-eyed Junco	<i>Junco hyemalis</i>	Known to occur	Fairly Common
Birds	Double-crested Cormorant	<i>Phalacrocorax auritus</i>	Known to occur	Common
Birds	Downy Woodpecker	<i>Picoides pubescens</i>	Likely to occur	Uncommon
Birds	Dusky Flycatcher	<i>Empidonax oberholseri</i>	May occur	Uncommon
Birds	Eared Grebe	<i>Podiceps nigricollis</i>	Known to occur	Uncommon
Birds	Eastern Bluebird	<i>Sialia sialis</i>	May occur	Rare
Birds	Eastern Kingbird	<i>Tyrannus tyrannus</i>	Known to occur	Fairly Common
Birds	Eastern Phoebe	<i>Sayornis phoebe</i>	May occur	Rare
Birds	Eastern Screech-Owl	<i>Otus asio</i>	May occur	Uncommon
Birds	European Starling	<i>Sturnus vulgaris</i>	Known to occur	Abundant
Birds	Evening Grosbeak	<i>Coccothraustes vespertinus</i>	May occur	Uncommon

Birds	Ferruginous Hawk	<i>Buteo regalis</i>	Likely to occur	Fairly Common *State species of special concern
Birds	Field Sparrow	<i>Spizella pusilla</i>	May occur	Rare
Birds	Forster's Tern	<i>Sterna forsteri</i>	May occur	Rare
Birds	Fox Sparrow	<i>Passerella iliaca</i>	May occur	Uncommon
Birds	Franklin's Gull	<i>Larus pipixcan</i>	Known to occur	Uncommon
Birds	Gadwall	<i>Anas strepera</i>	May occur	Rare - Uncommon
Birds	Glaucous Gull	<i>Larus hyperboreus</i>	May occur	Rare
Birds	Golden Eagle	<i>Aquila chrysaetos</i>	May occur	Uncommon
Birds	Golden-crowned Kinglet	<i>Regulus satrapa</i>	May occur	Rare
Birds	Grace's Warbler	<i>Dendroica graciae</i>	May occur	Very Rare
Birds	Grasshopper Sparrow	<i>Ammodramus savannarum</i>	Likely to occur	Uncommon
Birds	Gray Catbird	<i>Dumetella carolinensis</i>	Known to occur	Uncommon
Birds	Gray Flycatcher	<i>Empidonax wrightii</i>	May occur	Very Rare
Birds	Great Blue Heron	<i>Ardea herodias</i>	Known to occur	Common
Birds	Great Horned Owl	<i>Bubo virginianus</i>	Known to occur	Fairly Common
Birds	Greater Scaup	<i>Aythya marila</i>	May occur	Rare
Birds	Greater White-fronted Goose	<i>Anser albifrons</i>	May occur	Rare
Birds	Greater Yellowlegs	<i>Tringa melanoleuca</i>	May occur	Rare
Birds	Great-tailed Grackle	<i>Quiscalus mexicanus</i>	May occur	Rare
Birds	Green-backed Heron	<i>Butorides striatus</i>	May occur	Rare
Birds	Green-tailed Towhee	<i>Pipilo chlorurus</i>	Known to occur	Common
Birds	Green-winged Teal	<i>Anas crecca</i>	Likely to	Uncommon

			occur	
Birds	Hairy Woodpecker	<i>Picoides villosus</i>	May occur	Uncommon
Birds	Harris' Sparrow	<i>Zonotrichia querula</i>	May occur	Uncommon
Birds	Hermit Thrush	<i>Catharus guttatus</i>	Known to occur	Common
Birds	Herring Gull	<i>Larus argentatus</i>	May occur	Uncommon
Birds	Hooded Merganser	<i>Lophodytes cucullatus</i>	May occur	Rare
Birds	Horned Grebe	<i>Podiceps auritus</i>	May occur	Rare
Birds	Horned Lark	<i>Eremophila alpestris</i>	Likely to occur	Common
Birds	House Finch	<i>Carpodacus mexicanus</i>	Known to occur	Abundant
Birds	House Sparrow	<i>Passer domesticus</i>	Known to occur	Abundant
Birds	House Wren	<i>Troglodytes aedon</i>	Known to occur	Common
Birds	Indigo Bunting	<i>Passerina cyanea</i>	May occur	Very rare
Birds	Killdeer	<i>Charadrius vociferus</i>	Known to occur	Common
Birds	Lapland Longspur	<i>Calcarius lapponicus</i>	May occur	Rare
Birds	Lark Bunting	<i>Calamospiza melanocorys</i>	May occur	Rare
Birds	Lark Sparrow	<i>Chondestes grammacus</i>	Known to occur	Fairly Common
Birds	Lazuli Bunting	<i>Passerina amoena</i>	Known to occur	Uncommon
Birds	Least Bittern	<i>Ixobrychus exilis</i>	May occur	Casual-Accidental
Birds	Least Sandpiper	<i>Calidris minutilla</i>	May occur	Uncommon
Birds	Lesser Goldfinch	<i>Carduelis psaltria</i>	Known to occur	Uncommon
Birds	Lesser Scaup	<i>Aythya affinis</i>	Known to occur	Fairly Common
Birds	Lesser Yellowlegs	<i>Tringa flavipes</i>	May occur	Uncommon

Birds	Lewis' Woodpecker	<i>Melanerpes lewis</i>	May occur	Rare
Birds	Lincoln's Sparrow	<i>Melospiza lincolnii</i>	Likely to occur	Uncommon - Fairly Common
Birds	Loggerhead Shrike	<i>Lanius ludovicianus</i>	May occur	Rare
Birds	Long-billed Curlew	<i>Numenius americanus</i>	May occur	Rare *State species of special concern
Birds	Long-billed Dowitcher	<i>Limnodromus scolopaceus</i>	May occur	Uncommon
Birds	Long-eared Owl	<i>Asio otus</i>	May occur	Rare
Birds	MacGillivray's Warbler	<i>Oporornis tolmiei</i>	Known to occur	Uncommon
Birds	Mallard	<i>Anas platyrhynchos</i>	Known to occur	Abundant
Birds	Marbled Godwit	<i>Limosa fedoa</i>	May occur	Rare
Birds	Marsh Wren	<i>Cistothorus palustris</i>	May occur	Uncommon
Birds	Merlin	<i>Falco columbarius</i>	Known to occur	Rare
Birds	Mountain Bluebird	<i>Sialia currucoides</i>	Known to occur	Fairly Common
Birds	Mountain Chickadee	<i>Poecile gambeli</i>	Likely to occur	Fairly Common
Birds	Mourning Dove	<i>Zenaida macroura</i>	Known to occur	Abundant
Birds	Nashville Warbler	<i>Vermivora ruficapilla</i>	May occur	Rare
Birds	Northern Flicker	<i>Colaptes auratus</i>	Known to occur	Fairly Common
Birds	Northern Goshawk	<i>Accipiter gentilis</i>	May occur	Rare
Birds	Northern Harrier	<i>Circus cyaneus</i>	Likely to occur	Fairly Common
Birds	Northern Mockingbird	<i>Mimus polyglottos</i>	May occur	Rare
Birds	Northern Pintail	<i>Anas acuta</i>	May occur	Uncommon

Birds	Northern Rough-winged Swallow	<i>Stelgidopteryx serripennis</i>	Likely to occur	Fairly Common
Birds	Northern Saw-whet Owl	<i>Aegolius acadicus</i>	May occur	Uncommon
Birds	Northern Shoveler	<i>Anas clypeata</i>	Known to occur	Uncommon
Birds	Northern Shrike	<i>Lanius excubitor</i>	May occur	Rare
Birds	Oldsquaw	<i>Clangula hyemalis</i>	May occur	Rare
Birds	Olive-sided Flycatcher	<i>Contopus cooperi</i>	May occur	Uncommon
Birds	Orange-crowned Warbler	<i>Vermivora celata</i>	May occur	Uncommon
Birds	Orchard Oriole	<i>Icterus spurius</i>	May occur	Rare - Uncommon
Birds	Osprey	<i>Pandion haliaetus</i>	May occur	Rare
Birds	Ovenbird	<i>Seiurus aurocapillus</i>	May occur	Rare
Birds	Palm Warbler	<i>Dendroica palmarum</i>	May occur	Very Rare
Birds	Pectoral Sandpiper	<i>Calidris melanotos</i>	May occur	Uncommon
Birds	Peregrine Falcon	<i>Falco peregrinus</i>	Known to occur	Rare *State species of special concern
Birds	Pied-billed Grebe	<i>Podilymbus podiceps</i>	Known to occur	Fairly Common
Birds	Pine Grosbeak	<i>Pinicola enucleator</i>	May occur	Very Rare
Birds	Pine Siskin	<i>Carduelis pinus</i>	Known to occur	Uncommon
Birds	Plumbeous Vireo	<i>Vireo plumbeus</i>	May occur	Rare
Birds	Prairie Falcon	<i>Falco mexicanus</i>	May occur	Rare
Birds	Purple Finch	<i>Carpodacus purpureus</i>	May occur	Rare
Birds	Pygmy Nuthatch	<i>Sitta pygmaea</i>	May occur	Uncommon
Birds	Red Crossbill	<i>Loxia curvirostra</i>	May occur	Very Rare
Birds	Red Knot	<i>Calidris canutus</i>	May occur	Very Rare
Birds	Red-bellied Woodpecker	<i>Melanerpes carolinus</i>	May occur	Very Rare

SMITH ENVIRONMENTAL, INC.



Birds	Red-breasted Merganser	<i>Mergus serrator</i>	May occur	Rare - Uncommon
Birds	Red-breasted Nuthatch	<i>Sitta canadensis</i>	May occur	Uncommon
Birds	Red-eyed Vireo	<i>Vireo olivaceus</i>	May occur	Rare - Uncommon
Birds	Redhead	<i>Aythya americana</i>	Known to occur	Uncommon
Birds	Red-headed Woodpecker	<i>Melanerpes erythrocephalus</i>	May occur	Rare
Birds	Red-naped Sapsucker	<i>Sphyrapicus nuchalis</i>	May occur	Rare
Birds	Red-necked Grebe	<i>Podiceps grisegena</i>	May occur	Very rare
Birds	Red-necked Phalarope	<i>Phalaropus lobatus</i>	May occur	Rare - Uncommon
Birds	Red-tailed Hawk	<i>Buteo jamaicensis</i>	Known to occur	Common
Birds	Red-winged Blackbird	<i>Agelaius phoeniceus</i>	Known to occur	Abundant
Birds	Ring-billed Gull	<i>Larus delawarensis</i>	Known to occur	Common
Birds	Ring-necked Duck	<i>Aythya collaris</i>	Known to occur	Uncommon
Birds	Ring-necked Pheasant	<i>Phasianus colchicus</i>	May occur	Rare
Birds	Rock Dove	<i>Columba livia</i>	Known to occur	Abundant
Birds	Rock Wren	<i>Salpinctes obsoletus</i>	Likely to occur	Fairly Common
Birds	Rose-breasted Grosbeak	<i>Pheucticus ludovicianus</i>	May occur	Casual/Accidental
Birds	Rough-legged Hawk	<i>Buteo lagopus</i>	May occur	Rare
Birds	Ruby-crowned Kinglet	<i>Regulus calendula</i>	May occur	Uncommon
Birds	Ruddy Duck	<i>Oxyura jamaicensis</i>	Known to occur	Uncommon
Birds	Rufous	<i>Selasphorus rufus</i>	May occur	Rare

SMITH ENVIRONMENTAL, INC.

	Hummingbird			
Birds	Sage Sparrow	<i>Amphispiza belli</i>	May occur	Very rare
Birds	Sage Thrasher	<i>Oreoscoptes montanus</i>	May occur	Rare
Birds	Sanderling	<i>Calidris alba</i>	May occur	Rare
Birds	Savannah Sparrow	<i>Passerculus sandwichensis</i>	May occur	Uncommon
Birds	Say's Phoebe	<i>Sayornis saya</i>	Known to occur	Uncommon
Birds	Scissor-tailed Flycatcher	<i>Tyrannus forficatus</i>	May occur	Very Rare
Birds	Scott's Oriole	<i>Icterus parisorum</i>	May occur	Casual
Birds	Semipalmated Plover	<i>Charadrius semipalmatus</i>	May occur	Rare
Birds	Semipalmated Sandpiper	<i>Calidris pusilla</i>	May occur	Rare - Uncommon
Birds	Sharp-shinned Hawk	<i>Accipiter striatus</i>	May occur	Uncommon
Birds	Short-eared Owl	<i>Asio flammeus</i>	May occur	Rare
Birds	Snow Bunting	<i>Plectrophenax nivalis</i>	May occur	Casual
Birds	Snow Goose	<i>Chen caerulescens</i>	May occur	Rare
Birds	Snowy Egret	<i>Egretta thula</i>	Known to occur	Rare
Birds	Snowy Owl	<i>Nyctea scandiaca</i>	May occur	Rare
Birds	Snowy Plover	<i>Charadrius alexandrinus</i>	May occur	Very Rare
Birds	Solitary Sandpiper	<i>Tringa solitaria</i>	May occur	Uncommon
Birds	Solitary Vireo	<i>Vireo solitarius</i>	Known to occur	Uncommon
Birds	Song Sparrow	<i>Melospiza melodia</i>	Likely to occur	Fairly Common
Birds	Sora	<i>Porzana carolina</i>	May occur	Uncommon
Birds	Spotted Sandpiper	<i>Actitis macularia</i>	Known to occur	Fairly Common
Birds	Spotted Towhee	<i>Pipilo maculatus</i>	Likely to	Fairly Common

SMITH ENVIRONMENTAL, INC.

			occur	
Birds	Steller's Jay	<i>Cyanocitta stelleri</i>	Likely to occur	Uncommon
Birds	Stilt Sandpiper	<i>Calidris himantopus</i>	May occur	Uncommon
Birds	Summer Tanager	<i>Piranga rubra</i>	May occur	Rare
Birds	Surf Scoter	<i>Melanitta perspicillata</i>	May occur	Rare
Birds	Swainson's Hawk	<i>Buteo swainsoni</i>	Known to occur	Fairly Common
Birds	Swainson's Thrush	<i>Catharus ustulatus</i>	Known to occur	Fairly Common
Birds	Swamp Sparrow	<i>Melospiza georgiana</i>	May occur	Rare
Birds	Tennessee Warbler	<i>Vermivora peregrina</i>	May occur	Rare
Birds	Townsend's Solitaire	<i>Myadestes townsendi</i>	Known to occur	Fairly Common
Birds	Townsend's Warbler	<i>Dendroica townsendi</i>	May occur	Rare - Uncommon
Birds	Tree Swallow	<i>Tachycineta bicolor</i>	Known to occur	Fairly Common
Birds	Tundra Swan	<i>Cygnus columbianus</i>	May occur	Rare
Birds	Turkey Vulture	<i>Cathartes aura</i>	Known to occur	Fairly Common
Birds	Varied Thrush	<i>Ixoreus naevius</i>	May occur	Rare
Birds	Veery	<i>Catharus fuscescens</i>	May occur	Rare - Uncommon
Birds	Vermilion Flycatcher	<i>Pyrocephalus rubinus</i>	May occur	Very Rare
Birds	Vesper Sparrow	<i>Pooecetes gramineus</i>	Known to occur	Common
Birds	Violet-green Swallow	<i>Tachycineta thalassina</i>	Likely to occur	Fairly Common
Birds	Virginia Rail	<i>Rallus limicola</i>	May occur	Uncommon
Birds	Virginia's Warbler	<i>Vermivora</i>	Likely to	Fairly Common

SMITH ENVIRONMENTAL, INC.

		<i>virginiae</i>	occur	
Birds	Warbling Vireo	<i>Vireo gilvus</i>	Likely to occur	Fairly Common
Birds	Western Bluebird	<i>Sialia mexicana</i>	May occur	Uncommon
Birds	Western Burrowing Owl	<i>Athene cunicularia</i>	May occur	Rare *State-threatened species
Birds	Western Grebe	<i>Aechmophorus occidentalis</i>	Known to occur	Fairly Common
Birds	Western Kingbird	<i>Tyrannus verticalis</i>	Known to occur	Common
Birds	Western Meadowlark	<i>Sturnella neglecta</i>	Known to occur	Common
Birds	Western Sandpiper	<i>Calidris mauri</i>	May occur	Uncommon
Birds	Western Scrub Jay	<i>Aphelocoma californica</i>	Known to occur	Uncommon
Birds	Western Snowy Plover	<i>Charadrius alexandrinus nivosus</i>	May occur	Very Rare *State species of special concern
Birds	Western Tanager	<i>Piranga ludoviciana</i>	Known to occur	Fairly Common
Birds	Western Wood-Pewee	<i>Contopus sordidulus</i>	Likely to occur	Fairly Common
Birds	Whimbrel	<i>Numenius phaeopus</i>	May occur	Rare
Birds	White-breasted Nuthatch	<i>Sitta carolinensis</i>	May occur	Uncommon
Birds	White-crowned Sparrow	<i>Zonotrichia leucophrys</i>	Known to occur	Common
Birds	White-rumped Sandpiper	<i>Calidris fuscicollis</i>	May occur	Rare
Birds	White-throated Sparrow	<i>Zonotrichia albicollis</i>	May occur	Very Rare
Birds	White-throated Swift	<i>Aeronautes saxatalis</i>	Known to occur	Common
Birds	White-winged Crossbill	<i>Loxia leucoptera</i>	May occur	Rare

Birds	White-winged Scoter	<i>Melanitta fusca</i>	May occur	Rare
Birds	Willet	<i>Catoptrophorus semipalmatus</i>	May occur	Rare
Birds	Williamson's Sapsucker	<i>Sphyrapicus thyroideus</i>	May occur	Rare
Birds	Willow Flycatcher	<i>Empidonax traillii</i>	Known to occur	Uncommon
Birds	Wilson's Phalarope	<i>Phalaropus tricolor</i>	May occur	Uncommon
Birds	Wilson's Warbler	<i>Wilsonia pusilla</i>	Known to occur	Fairly Common
Birds	Winter Wren	<i>Troglodytes troglodytes</i>	May occur	Rare
Birds	Wood Duck	<i>Aix sponsa</i>	May occur	Uncommon
Birds	Wood Thrush	<i>Hylocichla mustelina</i>	May occur	Rare
Birds	Yellow Warbler	<i>Dendroica petechia</i>	Known to occur	Fairly Common
Birds	Yellow-billed Cuckoo	<i>Coccyzus americanus</i>	May occur	Rare *Federal Candidate for listing
Birds	Yellow-bellied Sapsucker	<i>Sphyrapicus varius</i>	May occur	Very Rare
Birds	Yellow-breasted Chat	<i>Icteria virens</i>	May occur	Uncommon
Birds	Yellow-crowned Night-Heron	<i>Nyctanassa violacea</i>	May occur	Rare
Birds	Yellow-headed Blackbird	<i>Xanthocephalus xanthocephalus</i>	Known to occur	Fairly Common
Birds	Yellow-rumped Warbler	<i>Dendroica coronata</i>	Known to occur	Common
Mammals	American Badger	<i>Taxidea taxus</i>	May occur	Uncommon
Mammals	Big Brown Bat	<i>Eptesicus fuscus</i>	Likely to occur	Common
Mammals	Black Bear	<i>Ursus americanus</i>	Likely to occur	Uncommon

Mammals	Black-tailed Jackrabbit	<i>Lepus californicus</i>	Likely to occur	Uncommon
Mammals	Black-tailed Prairie Dog	<i>Cynomys ludovicianus</i>	Known to occur	Common – Abundant *Federal candidate for listing
Mammals	Common Muskrat	<i>Ondatra zibethicus</i>	Likely to occur	Common
Mammals	Coyote	<i>Canis latrans</i>	Known to occur	Common
Mammals	Deer Mouse	<i>Peromyscus maniculatus</i>	Known to occur	Abundant
Mammals	Desert Cottontail	<i>Sylvilagus audubonii</i>	Known to occur	Abundant
Mammals	Eastern Cottontail	<i>Sylvilagus floridanus</i>	May occur	Uncommon
Mammals	Fox Squirrel	<i>Sciurus niger</i>	Known to occur	Common
Mammals	Fringed Myotis	<i>Myotis thysanodes</i>	May occur	Rare
Mammals	Golden-mantled Ground Squirrel	<i>Spermophilus lateralis</i>	Likely to occur	Fairly Common
Mammals	Gray Fox	<i>Urocyon cinereoargenteus</i>	May occur	Uncommon
Mammals	Hispid Pocket Mouse	<i>Chaetodipus hispidus</i>	Likely to occur	Fairly Common
Mammals	Hoary Bat	<i>Lasiurus cinereus</i>	Likely to occur	Fairly Common
Mammals	House Mouse	<i>Mus musculus</i>	Known to occur	Abundant
Mammals	Least Chipmunk	<i>Tamias minimus</i>	Likely to occur	Fairly Common
Mammals	Least Shrew	<i>Cryptotis parva</i>	May occur	Uncommon
Mammals	Little Brown Myotis	<i>Myotis lucifugus</i>	Known to occur	Abundant
Mammals	Long-eared Myotis	<i>Myotis evotis</i>	Likely to occur	Fairly Common
Mammals	Long-legged Myotis	<i>Myotis volans</i>	Likely to occur	Fairly Common

Mammals	Long-tailed Weasel	<i>Mustela frenata</i>	Likely to occur	Fairly Common
Mammals	Masked Shrew	<i>Sorex cinereus</i>	Known to occur	Fairly Common
Mammals	Meadow Vole	<i>Microtus pennsylvanicus</i>	Known to occur	Common
Mammals	Merriam's Shrew	<i>Sorex merriami</i>	May occur	Very Rare
Mammals	Montane Shrew	<i>Sorex monticolus</i>	May occur	Uncommon
Mammals	Mountain Lion	<i>Felis concolor</i>	May occur	Uncommon
Mammals	Mule Deer	<i>Odocoileus hemionus</i>	Known to occur	Fairly Common
Mammals	Northern Grasshopper Mouse	<i>Onychomys leucogaster</i>	May occur	Uncommon
Mammals	Northern Pocket Gopher	<i>Thomomys talpoides</i>	May occur	Unommon
Mammals	Plains Harvest Mouse	<i>Reithrodontomys montanus</i>	May occur	Rare
Mammals	Plains Pocket Gopher	<i>Geomys bursarius</i>	May occur	Uncommon
Mammals	Plains Pocket Mouse	<i>Perognathus flavescens</i>	Likely to occur	Fairly Common
Mammals	Prairie Vole	<i>Microtus ochrogaster</i>	Likely to occur	Fairly Common
Mammals	Preble's Meadow Jumping Mouse	<i>Zapus hudsonius preblei</i>	May occur	Rare – Uncommon *Federally-threatened species
Mammals	Raccoon	<i>Procyon lotor</i>	Known to occur	Abundant
Mammals	Red Bat	<i>Lasiurus borealis</i>	May occur	Rare
Mammals	Red Fox	<i>Vulpes vulpes</i>	Known to occur	Abundant
Mammals	Rock Squirrel	<i>Spermophilus variegatus</i>	May occur	Uncommon
Mammals	Silver-haired Bat	<i>Lasionycteris noctivagans</i>	Likely to occur	Fairly Common
Mammals	Spotted Ground	<i>Spermonhilus</i>	May occur	Uncommon

	Squirrel	<i>spilosoma</i>		
Mammals	Striped Skunk	<i>Mephitis mephitis</i>	Known to occur	Abundant
Mammals	Thirteen-lined Ground Squirrel	<i>Spermophilus tridecemlineatus</i>	May occur	Uncommon
Mammals	Townsend's Big-eared Bat	<i>Plecotus townsendii</i>	May occur	Uncommon
Mammals	Virginia Opossum	<i>Didelphis virginiana</i>	May occur	Casual/Accidental
Mammals	Water Shrew	<i>Sorex palustris</i>	May occur	Uncommon
Mammals	Western Small-footed Myotis	<i>Myotis ciliolabrum</i>	Likely to occur	Fairly Common
Mammals	White-tailed Deer	<i>Odocoileus virginianus</i>	May occur	Uncommon
Mammals	White-tailed Jackrabbit	<i>Lepus townsendii</i>	Likely to occur	Uncommon



## APPENDIX B

### Level 3 Property

The southeast corner of the property begins just west of the intersection of Colorado Highway 128 (SH 128) and Eldorado Boulevard, at the junction of Boulder, Jefferson and Broomfield counties. It continues west along SH 128, to McCaslin Boulevard. The property borders the east side of the McCaslin Boulevard right-of-way, north to the southern end of the Hilltop subdivision. The property continues northeast along the south and east sides of the Hilltop subdivision; then extends approximately 1,315 feet east from the intersection of Maroon Peak Circle and Castle Peak Avenue (at the south end of the Rosewood subdivision); and turns more northerly, extending approximately 1,580 feet to the eastern boundary fence. The eastern boundary of the property extends south along the fence, which separates the property and the existing Level 3 office complex to the east. It encompasses approximately 195 acres, in the extreme southwestern portion of the Town. This property is an expanse of steep, gullied mixed-grass prairie receiving little human use. A narrow drainage, containing a small cattail wetland (approximately .03 acres) trends through the eastern portion of the property. Prairie dog activity occurs in southern upland portions of this site.

There are several land uses adjacent to this property. SH 128 forms the southern border of the property. Eldorado Boulevard forms the eastern border of the property. McCaslin Boulevard forms the western border of the property. The Hilltop subdivision forms a portion of the northern border. The property receives some human disturbance from a recreational trail that is parallel to the southern edge of the subdivision and a water detention basin. The property also receives slight human disturbance from a small parking area near the southeast corner of the property, adjacent to SH 128.

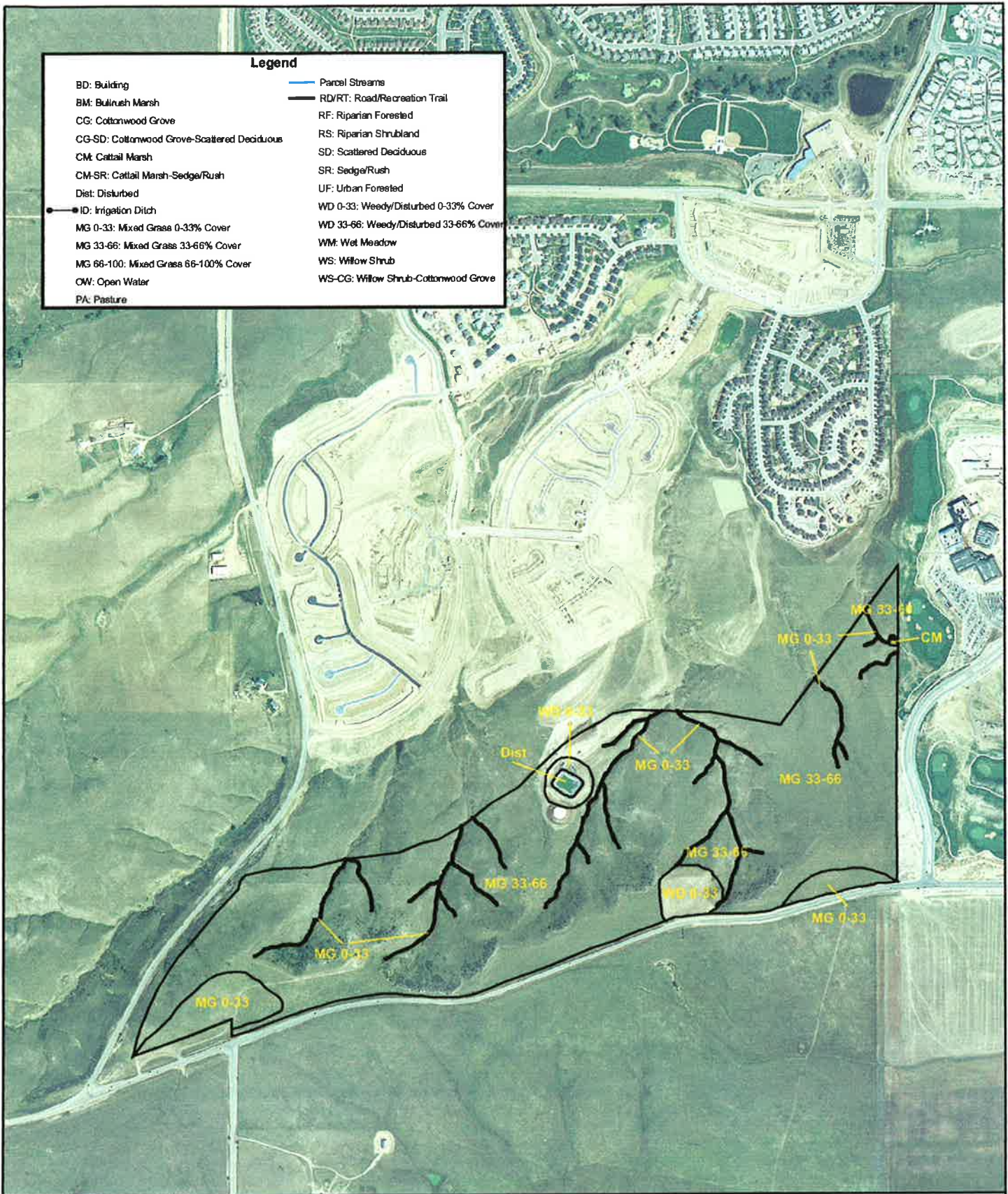
The ecological types present on the Level 3 property and their percentage of property coverage are listed on the following table and shown in Figure B-1.

<u>Habitat Type</u>	<u>Acreage (approx.)</u>	<u>% of property covered (approx.)</u>
Mixed-grass Prairie (34-66%)	174.51	89.4
Mixed-grass Prairie (0-33%)	13.96	7.1
Weedy/Disturbed (0 – 33% Cover)	5.95	3.0
Disturbed	0.78	<1
Cattail Marsh	0.07	<1

It is important to note that no wildlife species were directly observed on the date of survey (December 15, 2003). The weather was cold, clear and very windy (gusts to 30 miles per hour). This late survey date did not favor the observation of species that would ordinarily inhabit or use the property during the warmer months. Wildlife species visually evident on

the property during field surveys include: black-tailed prairie dog, coyote, and cottontail rabbit. Additional species not seen also use this property. Evidence of Canada geese was observed on the golf course adjacent to the Level 3 complex, east of the property. General wildlife habitat associations are shown in Figure B-2.

Wildlife enhancement and protection strategies are presented in Table B-1. Proposed wildlife protection areas and a range of enhancement strategies are presented in Figure B-3.



**Figure B-1: Level 3 Property: Ecological Type and Condition Map**



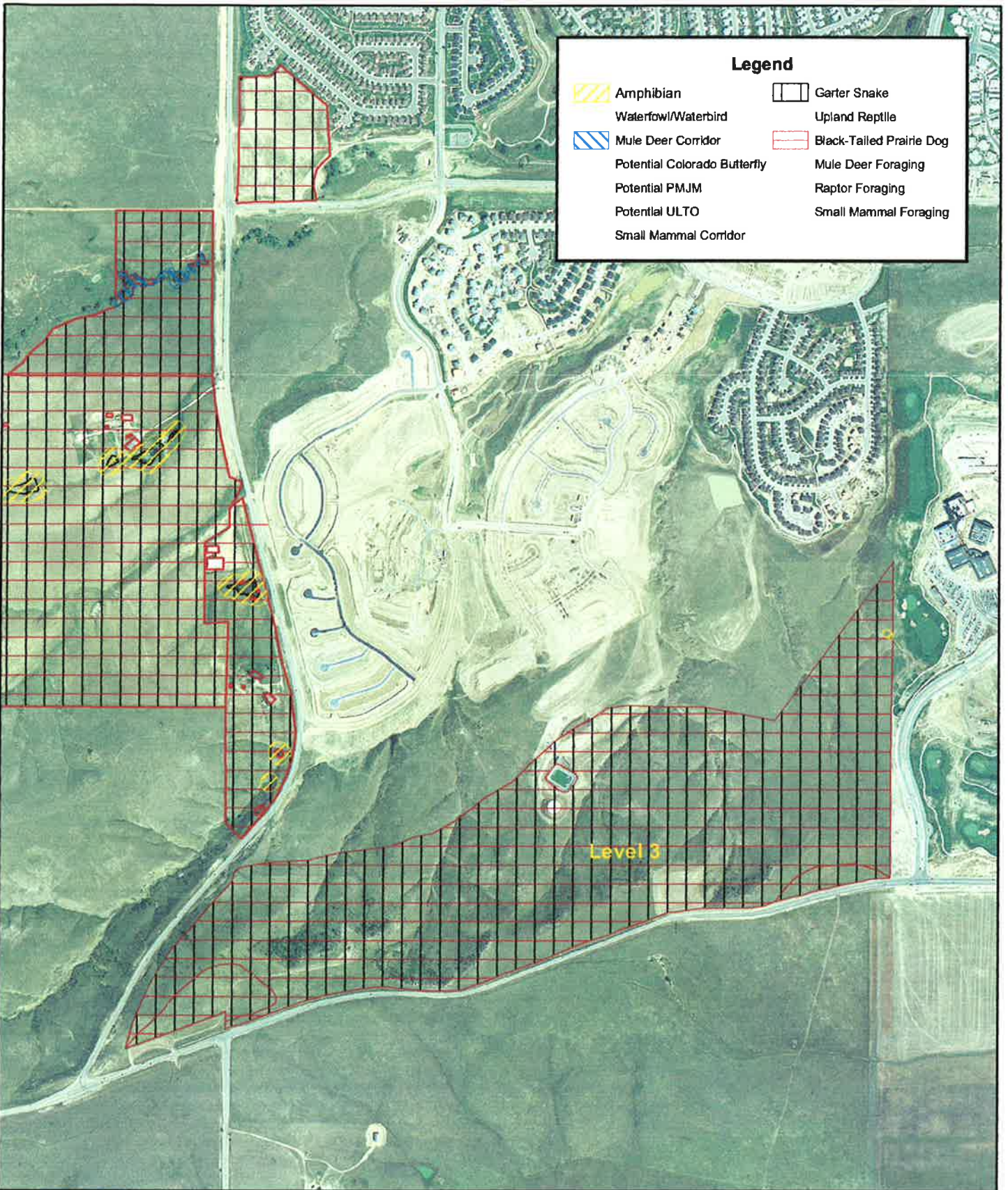
SMITH ENVIRONMENTAL INC.  
 1001 WEST 120TH AVE., SUITE 210  
 WESTMINSTER, CO 80234

Data Collected By: GM  
 Drawn By: SG  
 Date: December 18, 2003

0 500 1,000 Feet



SMITH ENVIRONMENTAL, INC.



**Figure B-2: Level 3 Property: Habitat Type and Corridor Map**



SMITH ENVIRONMENTAL INC.  
 1001 WEST 120TH AVE., SUITE 210  
 WESTMINSTER, CO 80234

Data Collected By: GM  
 Drawn By: SG  
 Date: December 18, 2003

0 550 1,100 Feet



SMITH ENVIRONMENTAL, INC.

**Table B-1. WILDLIFE PROTECTION AND ENHANCEMENT STRATEGIES AND RELATIVE COSTS FOR THE LEVEL 3 PROPERTY**

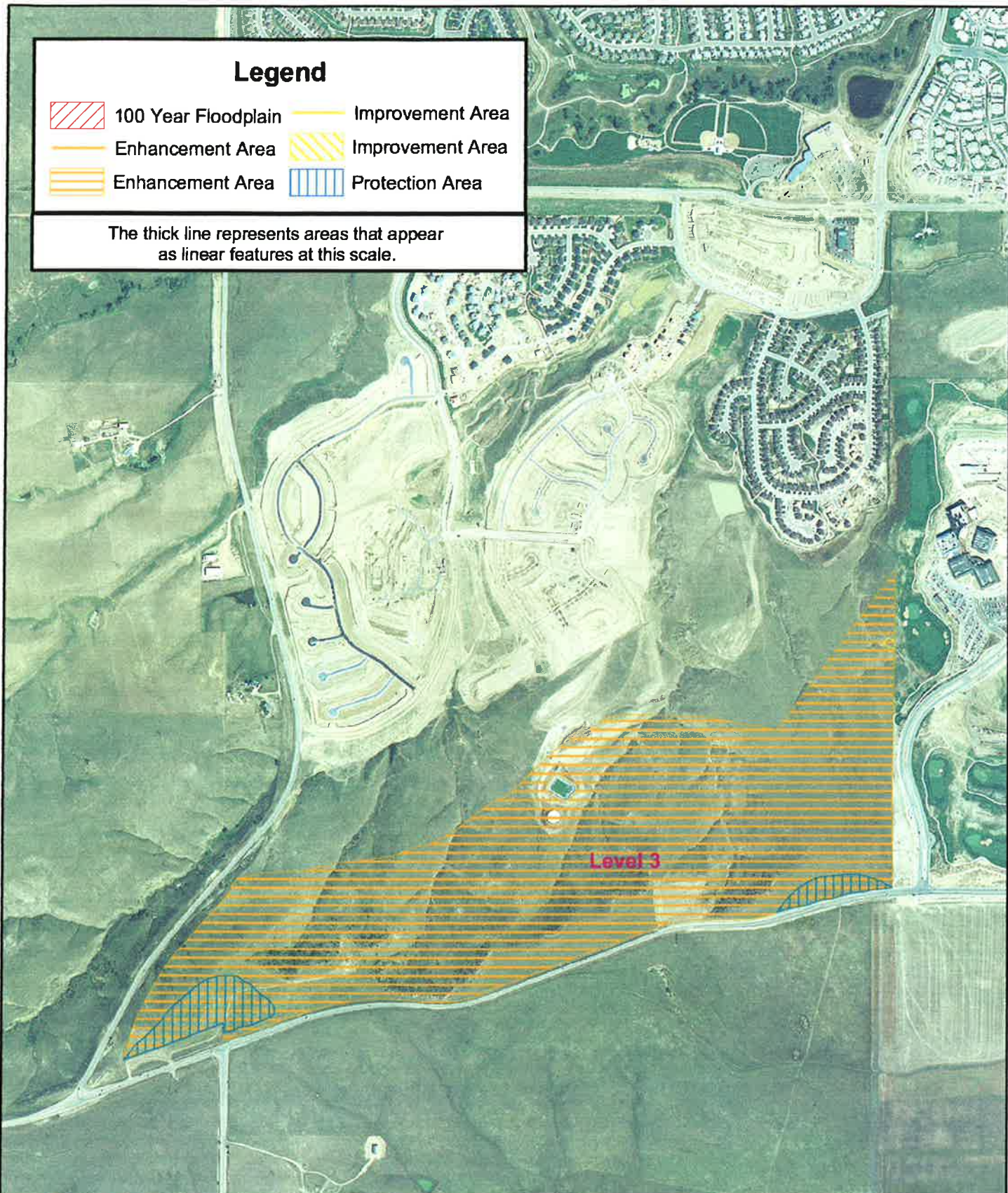
<b>Wildlife Protection Strategies*</b>	<b>Wildlife Enhancement Strategies*</b>	<b>General Property Improvement Strategies*</b>
<i>Raptor Protection Area - prairie dog colonies</i>	<i>Plant cottonwood trees to provide aesthetics, raptors, birds, small mammals and black-tailed prairie dog control - Moderate \$\$</i>	Exotic/noxious weed removal, re-seed weedy and disturbed areas with native plant species – Low to Moderate \$\$
	<i>Plant upland shrubs to provide habitat for reptiles, birds and small mammals – Low \$\$</i>	<i>Grade terrain to open wetland area to more sunlight – High \$\$</i>
	<i>Plant willow shrubs and/or cottonwood trees along edges of cattail marsh to benefit amphibian, bird and small mammal species - Low to Moderate \$\$</i>	Increase water flow/runoff to site to attempt to establish wetland areas in drainage bottoms – Low to Moderate \$\$
	<i>Install raptor perches and prairie dog predator cover near southern edge of property to limit prairie dog movement and regulate populations by promoting predator success - Low to Moderate \$\$</i>	

\* = Italicized text denotes strategy tied to geographic feature and/or shown on Protection and Enhancement Map

### Legend

-  100 Year Floodplain
-  Improvement Area
-  Enhancement Area
-  Improvement Area
-  Enhancement Area
-  Protection Area

The thick line represents areas that appear as linear features at this scale.



Level 3



**Figure B-3: Level 3 Property: Wildlife Protection and Enhancement Map**

SMITH ENVIRONMENTAL INC.  
1001 WEST 120TH AVE., SUITE 210  
WESTMINSTER, CO 80234

Data Collected By: GM  
Drawn By: SG  
Date: December 18, 2003

0 500 1,000 Feet



SMITH ENVIRONMENTAL, INC.