

Snow Removal and Ice Control

The Town's approach to winter snow removal is designed to organize cost-effective snow plowing and ice control operations in order to provide adequate mobility during periods of snow and ice. The primary purpose of the plan is to focus snow and ice removal efforts so that safe travel routes are available for a majority of the public during winter weather events. Depending on the Category of storm, and due to variability associated with each winter weather event, unique factors will influence when and what methods are utilized. The program includes prioritizing the Town's street system, sidewalk and trail system, and parking lots for plowing and deicing operations. The Town thanks you for your patience and cooperation during the snow removal process.

How Does Snow and Ice Get Managed?

The Town uses several methods of snow and ice control. The Public Works & Utilities Department uses up to four full-size plows for main roadways and several pickup trucks with plow attachments for smaller areas such as parking lots; the Parks, Recreation, & Open Space Department uses a combination of pickup trucks and OHVs with plow attachments to clear primary sidewalks and trails. Materials used on roadways include Ice Slicer and liquid de-icer, depending on the air temperature, pavement temperature, humidity, rate of snowfall, and the upcoming forecast. Ice Slicer is a combination of dry salts that melts ice and snow at temperatures down to 5 degrees F. Liquid de-icer is more commonly used as a pre-treat application to prevent ice from forming by keeping the roads wet. Though sometimes a residue can be seen after the application of these materials, both ice slicer and liquid de-icer are considered to be more environmentally-friendly than the traditional methods of applying sand or rock salt. Marshall Road, McCaslin Boulevard north of Marshall Road, the US 36 Interchange, and Highway 128 are managed by CDOT. Roadways in Downtown Superior are currently managed by the Metro District.

When Will My Street Get Plowed? How Does The Town Decide Which Streets To Plow?

The goal is to provide snow removal and ice control on Priority 1 and 2 streets during the storm. Priority 3 streets (routes through neighborhoods, school bus routes) will be treated after the storm has ended and there is an accumulation of 2 inches. Remaining residential streets are usually plowed or treated only after severe winter storms with accumulations of 6 inches to 12 inches. For accumulations of greater than 12 inches, snow and ice control may be delayed on Priority 4 streets due to the weight of the snow, the potential need for additional equipment, and the lower speed at which plows travel on residential streets. The Town's [Snow Removal Route Map For Streets](#) and [Sidewalk & Trail Snow Removal Map](#) display the Priority Levels near your residence or business.

After The Storm

When snow fall is predicted to be low or moderate, consider waiting until the storm has ended and snow plow operations have finished before clearing your sidewalks. If you have sidewalks along a plowed street, shovel sidewalk snow onto your property instead of into the street; this will help minimize any additional snow that may inadvertently get pushed onto the sidewalk by plows. It's impossible to completely avoid conflicts between snow removal on sidewalks and streets, so we have to work together and timing is key.

Winter Storm Categories

Winter storms that occur in our area may be categorized into four basic types. The response to the storm is different for each category. The following discussion presents information concerning these categories, the service levels maintained and the materials used for each type of storm.

Category I - Predicted Snow Fall Amount: **Trace – 2”**

Service Level: Maintain Priority 1 and 2 routes during storm. Lower priority snow routes usually do not require service.

Materials: Pre-treatment with liquids if possible and solid de-icer (Ice Slicer) as needed.

Road treatment primarily consists of applying Ice Slicer if necessary prior to the onset of the storm. Typically these storms move out of Superior within 24 hours and one application of Ice Slicer is sufficient to maintain the desired service level.

Category II - Predicted Snow Fall Amount: 2” – 6”

Service Level: Maintain Priority 1, 2 and 3 routes during storm. Priority 4 streets usually do not require service.

Materials: Pre-treatment with liquids if possible and solid de-icer (Ice Slicer) as needed.

Road treatment primarily consists of applying Ice Slicer as needed during the storm. Plowing may be required depending upon the weather conditions. If plowing is required, Priority 1 snow routes are maintained throughout the storm. Priority 2 and 3 routes are maintained as the storm abates or ends.

Category III - Predicted Snow Fall Amount: 6” – 12”

Service Level: Maintain Priority 1, 2 and 3 routes during storm. Priority 4 streets plowed at the end of the storm.

Materials: Ice Slicer as needed

Road treatment may initially consist of applying Ice Slicer at the onset of the storm, but typically progresses quickly to snow plowing with spot application of more material. During the storm, the focus is on clearing Priority 1 and 2 snow routes, with Priority 3 streets treated and/or plowed as personnel and equipment are available. Priority 4 streets are plowed after the snow has ceased and after Priority 1, 2 and 3 streets are plowed. Trucks will plow one lane down the center of cul-de-sacs and will not apply any de-icing material.

Category IV - Predicted Snow Fall Amount: 12” or more

Service Level: Priority 1 and 2 routes remain passable during storm event. Priority 3 streets are plowed after the main arterial streets are fully opened and passable. Priority 4 streets may be plowed after the storm if determined by the Town Manager.

Materials: Ice Slicer as the storm abates.

This category includes storms with sufficient snowfall to cause a major disruption in the transportation system. Major roadways including interstate highways may be closed. Businesses and schools may also be closed. During the storm, Priority 1 and 2 routes will remain passable. All other routes will be plowed as personnel and equipment permit, typically after snowfall has ceased. Snow removal may be required on Priority 4 streets depending upon the final storm accumulation. Removal of snow from cul-de-sacs during a major storm event may require the use of loaders and dump trucks. Since this is a significant cost for the Town, such a step will only be considered during mid-winter, December 1 to March 15, for a major storm accompanied by prolonged freezing temperatures where large snow accumulations risk turning into ice. (Spring storms usually have deep accumulations but subsequent warm temperatures rapidly melt the snow without ice formation).

Priority Level of Town Streets

The Town’s [Snow Removal Route Map](#) displays the Priority Level of streets near your residence or business. These priorities include:

Priority Level 1 – Arterial and Major Collector Streets

These routes include Main St, Old Rail Way, Promenade Dr, McCaslin Blvd, 76th Street, Sycamore Street, Rock Creek Parkway, 88th Street, Coalton Road, and Indiana Street. These roadways may be pre-treated prior to storm events and will be plowed once snow accumulates to a depth of 2 inches or when icy conditions exist. The Town will provide 24 hour coverage on Priority Level 1 roadways from the time operations commence until completion of the storm event.

Priority Level 2 – Secondary Collector Streets

These routes include Torreys Peak Drive, Rock Creek Circle, Coal Creek Drive in Original Town, Yarrow Circle,

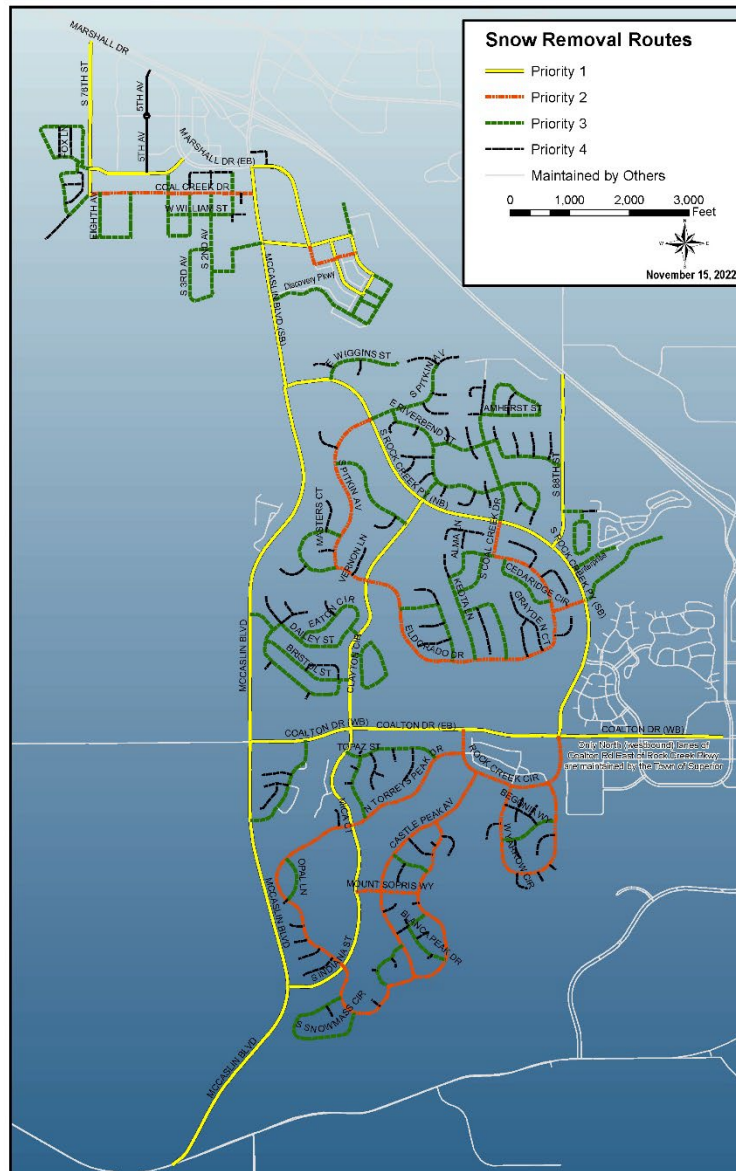
Eldorado Drive, S. Pitkin Ave between Indiana Street and Rock Creek Parkway, Huron Peak Avenue, and Castle Peak Avenue. These routes will be plowed to open the driving lanes in both directions to the extent allowable dependent on parking and snow conditions. These routes may also be pretreated and will be plowed once snow accumulates to a depth of 2 inches and the Priority Level 1 streets have been cleared or as time permits. Plowing frequency will be time dependent upon the needs of the Priority Level 1 routes. The Town will provide continuous coverage on these roadways between the hours of 5 am and 11 pm during storm events.

Priority Level 3 – Neighborhood Collector Streets

See snow removal map for information on specific routes. These roadways are through routes within neighborhoods and are often school bus routes within neighborhood areas. These routes will be cleared to provide a single drivable lane once snow accumulates to a depth of 2 inches or more. Spot treatment for ice control will be applied at intersections or problem areas only. Plowing operations will typically begin after the storm has abated and usually in the early morning hours to have a majority of the roads cleared before the early rush hour.

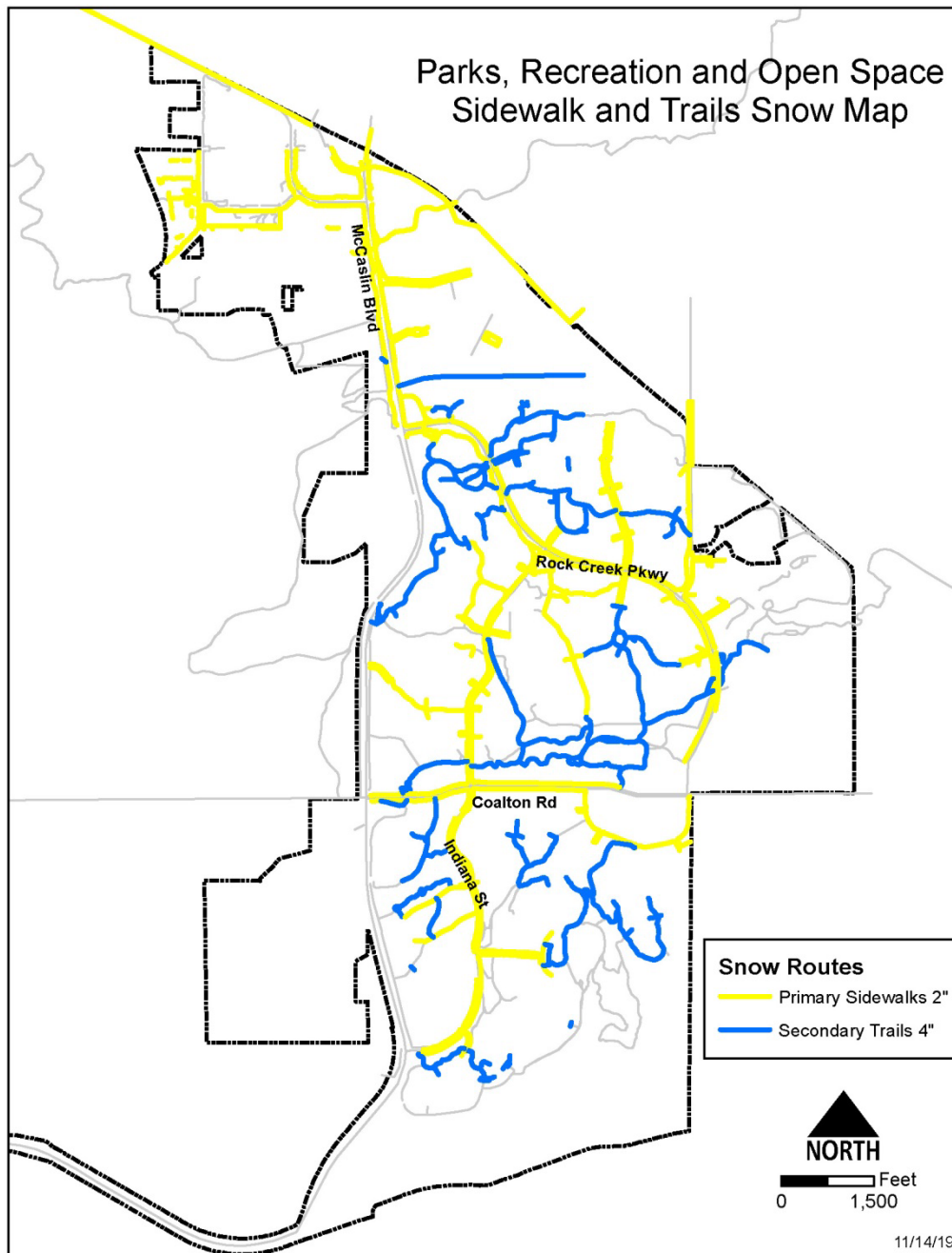
Priority Level 4 – Residential Streets and Culs-de-sac

These are unmarked roadways on map. These streets will not typically be plowed or treated. The Town will address these streets if time and weather conditions warrant such actions.



Trails and Sidewalks

The Town also prioritizes the plowing of its trails and sidewalks to allow residents to walk to schools and bus stops during snow events. See the Town's [Sidewalk & Trail Snow Removal Map](#). The Town removes snow on walks adjacent to arterial and collector streets. Residents are responsible for clearing snow on sidewalks adjacent to their property within 24 hours after it stops snowing. Shoveling sidewalks helps prevent accidents and increases accessibility for pedestrians. Senior citizens and physically disabled persons who are unable to clear snow from their sidewalks may receive assistance through the [Snow Busters Program](#).



Town Parking Lots

The Town strives to clear parking lots at Town Hall, the North Pool, water, wastewater and other facilities by 8 AM on weekdays.

FAQs

- Who removes snow on the roads?

Snow is removed from public roads by the Public Works Department in conjunction with contract snow removal services. The alleys in Downtown Superior are currently managed by the Metro District. For questions about snow removal responsibility for specific streets call 303-499-3675 x. 110.

[View a map of snow removal routes on public roads](#)

[View a map of snow removal routes on sidewalks and trails](#)

- Who removes snow on trails and sidewalks?

The Parks, Recreation, and Open Space Department in conjunction with contract snow removal services. Please call 303-499-3675 x. 171 with any questions about snow removal on trails and sidewalks.

- How is snow and ice managed for Town streets?

The Town uses several methods of snow and ice control. The Public Works & Utilities Department uses up to four full-size plows for main roadways and several pickup trucks with plow attachments for smaller areas such as parking lots.

Materials used on roadways include Ice Slicer and liquid de-icer, depending on the air temperature, pavement temperature, humidity, rate of snowfall, and upcoming forecast. Ice Slicer is a combination of dry salts that melt ice and snow at temperatures down to 5 degrees F. Liquid de-icer is more commonly used as a pre-treat application to prevent ice from forming by keeping the roads wet. Though sometimes a residue can be seen after the application of these materials, both ice slicer and liquid de-icer are considered to be more environmentally-friendly than the traditional methods of applying sand or rock salt.

Marshall Road, McCaslin Boulevard north of Marshall Road, the US-36 Interchange, and Highway 128 are managed by CDOT. Alleys in Downtown Superior are currently managed by the Metro District.

- How does the Town decide which streets to plow? When will my street get plowed?

The Town's goal is to provide snow removal and ice control on Priority 1 and 2 streets (see category descriptions below) during the storm. Priority 3 streets (routes through neighborhoods, school bus routes) will be treated after the storm has ended and there is an accumulation of 2 inches. Remaining residential streets are usually plowed or treated only after severe winter storms with accumulations of 6 inches to 12 inches. For accumulations of greater than 12 inches, snow and ice control may be delayed on Priority 4 streets due to the weight of the snow, the potential need for additional equipment, and the lower speed at which plows travel on residential streets.

[View a map of snow removal routes on public roads](#)

- How is snow and ice managed for sidewalks and trails?

The Parks, Recreation, & Open Space Department uses a combination of pickup trucks and OHVs with plow attachments to clear primary sidewalks and trails. The Town prioritizes the plowing of its trails and sidewalks to allow residents to walk to schools and bus stops during snow events. The Town removes snow on walks adjacent to arterial and collector streets. See the Town's [Sidewalk & Trail Snow Removal Map](#)

Town staff are in constant communication with the Town landscape vendor (Brightview) to coordinate snow removal and respond to problem areas. Snow removal efforts begin after snow levels reach approximately 1 inch in depth. Brightview will move snow that accumulates on Primary Sidewalks and Trails (and handicap access to these) and Secondary areas as directed by Town staff. Staff may augment snow removal efforts in areas where small pickup trucks are advantageous. Snow is piled in areas so as not to unreasonably impede normal pedestrian traffic. Bicycle lanes may be used to pile snow when snowfall depths are excessive. After snow removal a spot application of natural chloride product on Primary Sidewalks and Trails adjacent to schools and follow-up spot applications as required for icy areas, only when icy conditions exist.

Brightview is not expected to service or be liable for any services during blizzard conditions or at times deemed to be a State of Emergency by the Governor of Colorado.

Due to the close proximity of roadways to sidewalks and trails, there are situations when roadway snow may be inadvertently piled onto trails and sidewalks. In these instances, staff and contractors work cooperatively to

manage snow removal and snow storage as safely and effectively as possible.

Residents are responsible for clearing snow on sidewalks adjacent to their property within 24 hours after snow fall end. Shoveling sidewalks helps prevent accidents and increases accessibility for pedestrians. Senior citizens and physically disabled persons who are unable to clear snow from their sidewalks may request volunteer assistance through the [Snow Busters Program](#).

- What about parking lots?

The Town strives to clear parking lots at Town Hall, the North Pool, water, wastewater and other facilities by 8:00 a.m. on weekdays.

- Who do I call in case of an emergency?
911
Boulder County Sheriff: 303-442-4382
- Who do I call when I do not have an emergency?
Streets: 303-499-3675 x. 110
Trails: 303-499-3675 x. 171
Sidewalks adjacent to Town-owned open space: 303-499-3675 x. 171
Sidewalks adjacent to businesses or residences: 303-499-3675 x. 165
For after-hours requests: 303-554-9086
- What can YOU do to help?
 - Please be patient with snow crews as they do their work, especially when there is a large snow event.
 - Limit travel if possible.
 - When possible, move your car from the streets and culs-de-sac to allow snow plows easy passage and access.
 - Residents can minimize the need to repeatedly shovel sidewalks by waiting until a storm is over and streets have been plowed.

Important Phone Numbers & Websites

Town Streets: Monday-Friday (8 AM to 5 PM) 303-499-3675
After Hours: 303-554-9086

State Highways: Colorado Department of Transportation – Boulder County: 303-442-4382
Highway Conditions in Colorado: www.cotrip.org