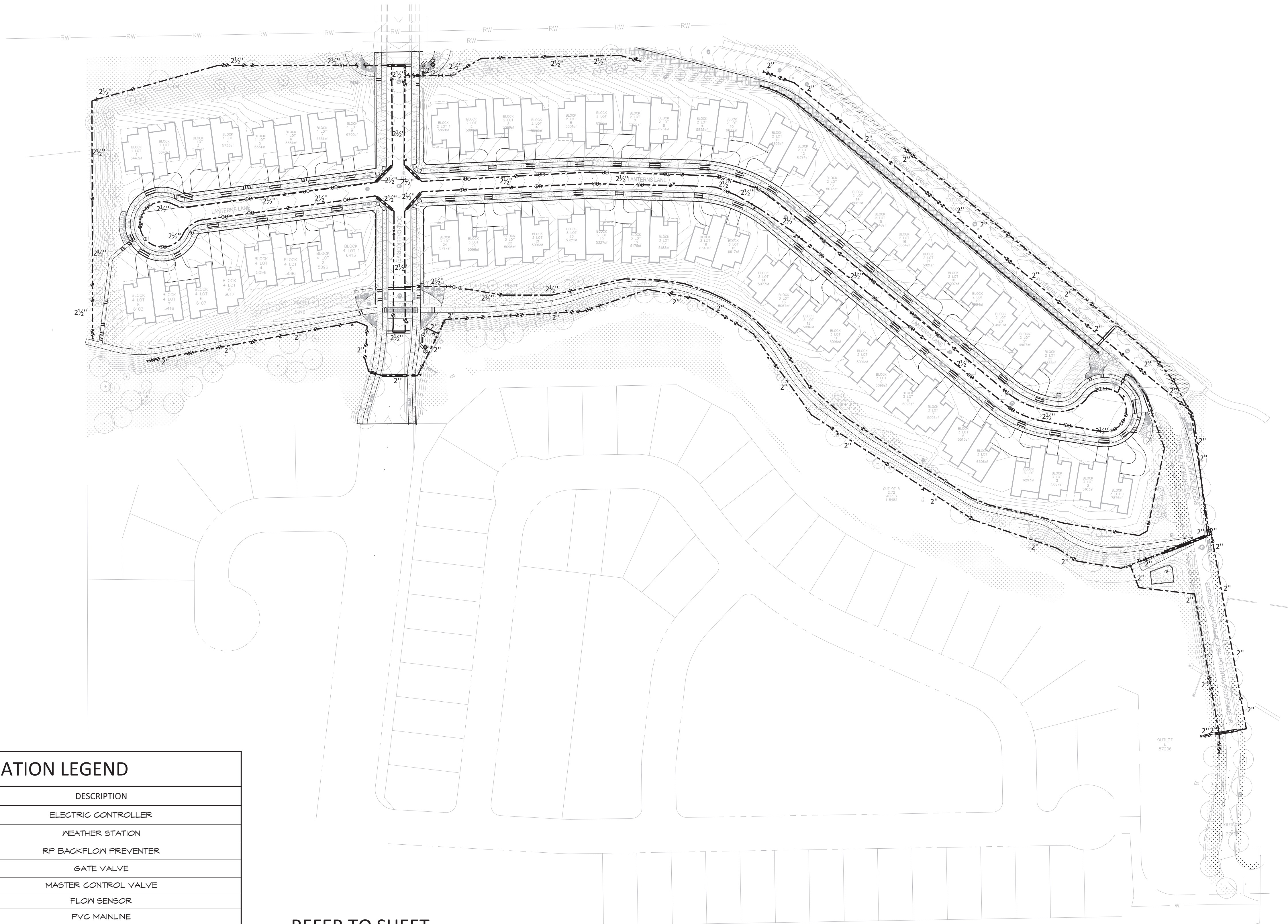













FINAL PLAT SITE PLAN 35, AMENDMENT #1
BLOCK 1, LOTS 1 THROUGH 8, BLOCK 2, LOTS 1 THROUGH 22, BLOCK 3, LOTS 1 THROUGH 24, BLOCK 4, LOTS 1 THROUGH 8, TRACTS A THROUGH E, OUTLOTS A THROUGH E
ROCK CREEK RANCH FILING NO. 12A

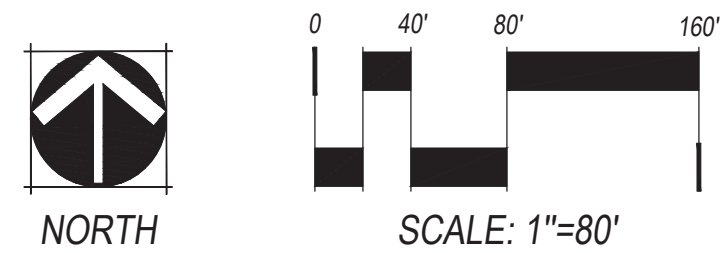
VESTED RIGHTS
 This Plan constitutes a site specific development plan as defined in Section 24-68-101, et. seq., C.R.S., and Chapter 16 of the Superior Municipal Code, available at the Superior Town Hall, 124 East Coal Creek Drive, Superior, Colorado. Such a vested right shall be valid for a period of three (3) years, pursuant to approval by the Town of Superior Board of Trustees on 23rd Day of July, 2018


NORRIS DESIGN
Planning | Landscape Architecture | Project Promotion
 1101 Bannock Street
 Denver, Colorado 80204
 P 303.892.1166
 www.norris-design.com



IRRIGATION LEGEND	
SYMBOL	DESCRIPTION
	ELECTRIC CONTROLLER
	WEATHER STATION
	RP BACKFLOW PREVENTER
	GATE VALVE
	MASTER CONTROL VALVE
	FLOW SENSOR
	PVC MAINLINE
	PVC LATERAL 1"
	PVC SLEEVING
	DRIP VALVE ASSEMBLY
	WATER METER

REFER TO SHEET
 62 OVERALL IRRIGATION
 63-68 IRRIGATION PLANS
 69 IRRIGATION NOTES
 69 IRRIGATION SCHEDULE




HydroSystems KDI
Irrigation Consulting & Water Management
 860 Tabor Street, Suite 200 Lakewood, Colorado 80401
 o: 303.980.5327 www.hydrosystemsmdi.com

ROCK CREEK RANCH FIL. NO. 12A
FINAL PLAT SITE PLAN 35, AMENDMENT #1
 SUPERIOR, COLORADO

OWNER:
 SUPERIOR ROCK CREEK, LLC
 1440 BLAKE ST. 3320
 DENVER, CO 80202

APPLICANT:
 BOULDER CREEK
 NEIGHBORHOODS
 712 MAIN STREET
 LOUISVILLE, CO


811
 Know what's below.
 Call before you dig.

DATE:
 JANUARY 24, 2018
 APRIL 18, 2018
 JUNE 13, 2018
 JULY 16, 2018
 OCTOBER 5, 2018
 OCTOBER 19, 2018

SHEET TITLE:
 OVERALL
 IRRIGATION

SHEET 62 OF 69

NOT FOR CONSTRUCTION

CHECKED BY:
 DRAWN BY:
 LV
 RB/CTCM

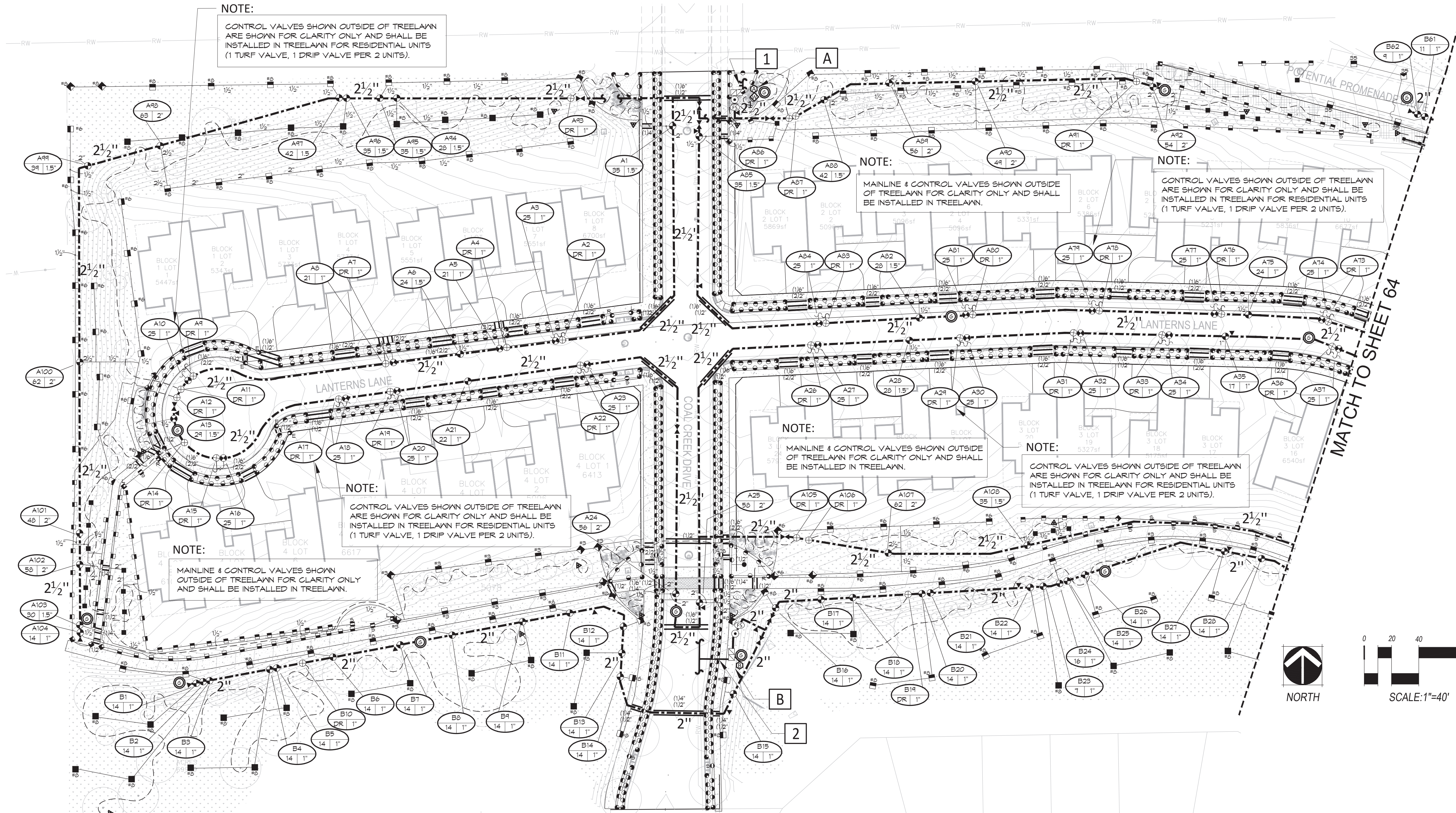
FINAL PLAT SITE PLAN 35, AMENDMENT #1

BLOCK 1, LOTS 1 THROUGH 8, BLOCK 2, LOTS 1 THROUGH 22, BLOCK 3, LOTS 1 THROUGH 24, BLOCK 4, LOTS 1 THROUGH 8, TRACTS A THROUGH E, OUTLOTS A THROUGH E

ROCK CREEK RANCH FILING NO. 12A

VESTED RIGHTS
 This Plan constitutes a site specific development plan as defined in Section 24-68-101, et seq., C.R.S., and Chapter 16 of the Superior Municipal Code, available at the Superior Town Hall, 124 East Coal Creek Drive, Superior, Colorado. Such a vested right shall be valid for a period of three (3) years, pursuant to approval by the Town of Superior Board of Trustees on 23rd Day of July, 2018

NORRIS DESIGN
 Planning | Landscape Architecture | Project Promotion
 1101 Bannock Street
 Denver, Colorado 80204
 P 303.892.1166
 www.norris-design.com



NOTE:
 CONTROL VALVES SHOWN OUTSIDE OF TREELAWN ARE SHOWN FOR CLARITY ONLY AND SHALL BE INSTALLED IN TREELAWN FOR RESIDENTIAL UNITS (1 TURF VALVE, 1 DRIP VALVE PER 2 UNITS).

NOTE:
 MAINLINE & CONTROL VALVES SHOWN OUTSIDE OF TREELAWN FOR CLARITY ONLY AND SHALL BE INSTALLED IN TREELAWN.

NOTE:
 CONTROL VALVES SHOWN OUTSIDE OF TREELAWN ARE SHOWN FOR CLARITY ONLY AND SHALL BE INSTALLED IN TREELAWN FOR RESIDENTIAL UNITS (1 TURF VALVE, 1 DRIP VALVE PER 2 UNITS).

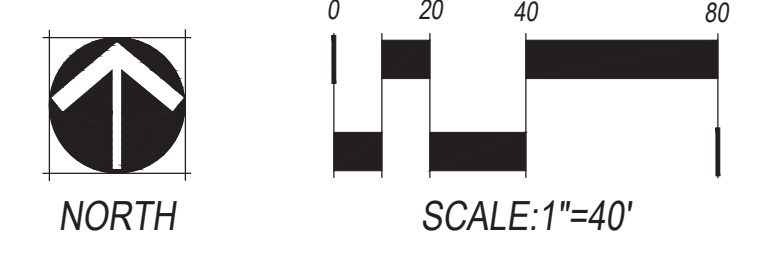
NOTE:
 CONTROL VALVES SHOWN OUTSIDE OF TREELAWN ARE SHOWN FOR CLARITY ONLY AND SHALL BE INSTALLED IN TREELAWN FOR RESIDENTIAL UNITS (1 TURF VALVE, 1 DRIP VALVE PER 2 UNITS).

NOTE:
 MAINLINE & CONTROL VALVES SHOWN OUTSIDE OF TREELAWN FOR CLARITY ONLY AND SHALL BE INSTALLED IN TREELAWN.

NOTE:
 CONTROL VALVES SHOWN OUTSIDE OF TREELAWN ARE SHOWN FOR CLARITY ONLY AND SHALL BE INSTALLED IN TREELAWN FOR RESIDENTIAL UNITS (1 TURF VALVE, 1 DRIP VALVE PER 2 UNITS).

NOTE:
 MAINLINE & CONTROL VALVES SHOWN OUTSIDE OF TREELAWN FOR CLARITY ONLY AND SHALL BE INSTALLED IN TREELAWN.

MATCH TO SHEET 64



1 — POINT OF CONNECTION #1- 2"
 PEAK FLOW REQUIREMENT: 70 GPM. REQUIRED STATIC PRESSURE: 88 PSI
 TIE ONTO 2" COPPER STUB-OUT DOWNSTREAM OF WATER METER AT 54" DEPTH IN THIS APPROXIMATE LOCATION, BY OTHERS REFER TO CIVIL PLAN. EXTEND 2" TYPE K SOFT COPPER AT 54" MINIMUM DEPTH TO BACKFLOW PREVENTER LOCATION. INSTALL ONE 2" STOP AND WASTE VALVE, ONE 2" REDUCED PRESSURE BACKFLOW PREVENTER WITH PROTECTIVE ENCLOSURE, ONE MANUAL DRAIN VALVE, ONE FLOW SENSOR, ONE MASTER VALVE, ONE QUICK COUPLING VALVE, ONE GATE VALVE AND EXTEND PVC MAINLINE AS SHOWN. CONNECT FLOW SENSOR AND MASTER VALVE TO ASSOCIATED CONTROLLER VIA TWO-WIRE COMMUNICATION CABLE PER MANUFACTURER'S REQUIREMENTS. SEE DETAIL SHEET FOR REQUIRED PIPE LENGTHS UPSTREAM AND DOWNSTREAM OF FLOW SENSING UNIT. WORK SHALL CONFORM TO LOCAL CODE. FEES AND PERMITS ASSOCIATED WITH WORK ARE TO BE OBTAINED AND PAID FOR BY CONTRACTOR. FINAL BACKFLOW PREVENTER LOCATION SHALL BE APPROVED BY OWNER'S REPRESENTATIVE PRIOR TO INSTALLATION.

B — CONTROLLER LOCATION "B"
 PEDESTAL MOUNT ONE CONTROLLER (REFER TO SCHEDULE FOR MODEL & STATION COUNT), REMOTE READY, AT INDICATED LOCATION. 120 VOLT POWER SHALL BE COORDINATED BY CONTRACTOR WITH ELECTRICAL ENGINEER AND CONTRACTOR PRIOR TO CONSTRUCTION AND MADE AVAILABLE WITHIN 50 LF. OF CONTROLLER LOCATION FROM TRANSFORMER OR RESIDENTIAL PEDESTAL. ELECTRICAL METER, WIRE/CONDUIT, STEP-DOWN TRANSFORMER (IF REQUIRED) AND POWER CONNECTION TO CONTROLLER IS BY CONTRACTOR WITH WORK CONFORMING TO LOCAL CODES. FEES AND PERMITS ASSOCIATED WITH WORK ARE TO BE OBTAINED AND PAID BY CONTRACTOR. CONNECT FLOW SENSOR AND MASTER VALVE TO ASSOCIATED CONTROLLER VIA TWO-WIRE COMMUNICATION CABLE PER MANUFACTURER'S REQUIREMENTS. FINAL CONTROLLER LOCATION SHALL BE APPROVED BY OWNER OR OWNER'S REPRESENTATIVE PRIOR TO INSTALLATION. MOUNT ONE WEATHER SENSOR ON POLE WHERE THERE IS 20 FT. OF CLEARANCE FROM ANY OVERHANG OR OBSTRUCTING FEATURE. WEATHER SENSOR RECEIVER IS IN CONTROLLER ENCLOSURE. FINAL WEATHER SENSOR LOCATION SHALL BE APPROVED BY OWNER OR OWNER'S REPRESENTATIVE PRIOR TO INSTALLATION.

A — CONTROLLER LOCATION "A"
 PEDESTAL MOUNT ONE CONTROLLER (REFER TO SCHEDULE FOR MODEL & STATION COUNT), REMOTE READY, AT INDICATED LOCATION. 120 VOLT POWER SHALL BE COORDINATED BY CONTRACTOR WITH ELECTRICAL ENGINEER AND CONTRACTOR PRIOR TO CONSTRUCTION AND MADE AVAILABLE WITHIN 50 LF. OF CONTROLLER LOCATION FROM TRANSFORMER OR RESIDENTIAL PEDESTAL. ELECTRICAL METER, WIRE/CONDUIT, STEP-DOWN TRANSFORMER (IF REQUIRED) AND POWER CONNECTION TO CONTROLLER IS BY CONTRACTOR WITH WORK CONFORMING TO LOCAL CODES. FEES AND PERMITS ASSOCIATED WITH WORK ARE TO BE OBTAINED AND PAID BY CONTRACTOR. CONNECT FLOW SENSOR AND MASTER VALVE TO ASSOCIATED CONTROLLER VIA TWO-WIRE COMMUNICATION CABLE PER MANUFACTURER'S REQUIREMENTS. FINAL CONTROLLER LOCATION SHALL BE APPROVED BY OWNER OR OWNER'S REPRESENTATIVE PRIOR TO INSTALLATION. MOUNT ONE WEATHER SENSOR ON POLE WHERE THERE IS 20 FT. OF CLEARANCE FROM ANY OVERHANG OR OBSTRUCTING FEATURE. WEATHER SENSOR RECEIVER IS IN CONTROLLER ENCLOSURE. FINAL WEATHER SENSOR LOCATION SHALL BE APPROVED BY OWNER OR OWNER'S REPRESENTATIVE PRIOR TO INSTALLATION.

2 — POINT OF CONNECTION #2- 1"
 PEAK FLOW REQUIREMENT: 18 GPM. REQUIRED STATIC PRESSURE: 80 PSI
 TIE ONTO 1" COPPER STUB-OUT DOWNSTREAM OF WATER METER AT 54" DEPTH IN THIS APPROXIMATE LOCATION, BY OTHERS REFER TO CIVIL PLAN. EXTEND 1" TYPE K SOFT COPPER AT 54" MINIMUM DEPTH TO BACKFLOW PREVENTER LOCATION. INSTALL ONE 1" STOP AND WASTE VALVE, ONE 1" REDUCED PRESSURE BACKFLOW PREVENTER WITH PROTECTIVE ENCLOSURE, ONE MANUAL DRAIN VALVE, ONE FLOW SENSOR, ONE MASTER VALVE, ONE QUICK COUPLING VALVE, ONE GATE VALVE AND EXTEND PVC MAINLINE AS SHOWN. CONNECT FLOW SENSOR AND MASTER VALVE TO ASSOCIATED CONTROLLER VIA TWO-WIRE COMMUNICATION CABLE PER MANUFACTURER'S REQUIREMENTS. SEE DETAIL SHEET FOR REQUIRED PIPE LENGTHS UPSTREAM AND DOWNSTREAM OF FLOW SENSING UNIT. WORK SHALL CONFORM TO LOCAL CODE. FEES AND PERMITS ASSOCIATED WITH WORK ARE TO BE OBTAINED AND PAID FOR BY CONTRACTOR. FINAL BACKFLOW PREVENTER LOCATION SHALL BE APPROVED BY OWNER'S REPRESENTATIVE PRIOR TO INSTALLATION.

REFER TO SHEET	
62	OVERALL IRRIGATION
63-68	IRRIGATION PLANS
69	IRRIGATION NOTES
69	IRRIGATION SCHEDULE

ROCK CREEK RANCH FIL. NO. 12A
 FINAL PLAT SITE PLAN 35, AMENDMENT #1
 SUPERIOR, COLORADO

OWNER:
 SUPERIOR ROCK CREEK, LLC
 1440 BLAKE ST. 3320
 DENVER, CO 80202

APPLICANT:
 BOULDER CREEK
 NEIGHBORHOODS
 712 MAIN STREET
 LOUISVILLE, CO



DATE:

JANUARY 24, 2018
APRIL 18, 2018
JUNE 13, 2018
JULY 16, 2018
OCTOBER 5, 2018
OCTOBER 19, 2018

SHEET TITLE:
 IRRIGATION
 PLAN

KDI

HydroSystems
 Irrigation Consulting & Water Management
 860 Tabor Street, Suite 200 Lakewood, Colorado 80401
 o: 303.980.5327 www.hydro-systems.com

NOT FOR CONSTRUCTION

CHECKED BY: LV
 DRAWN BY: REICOM

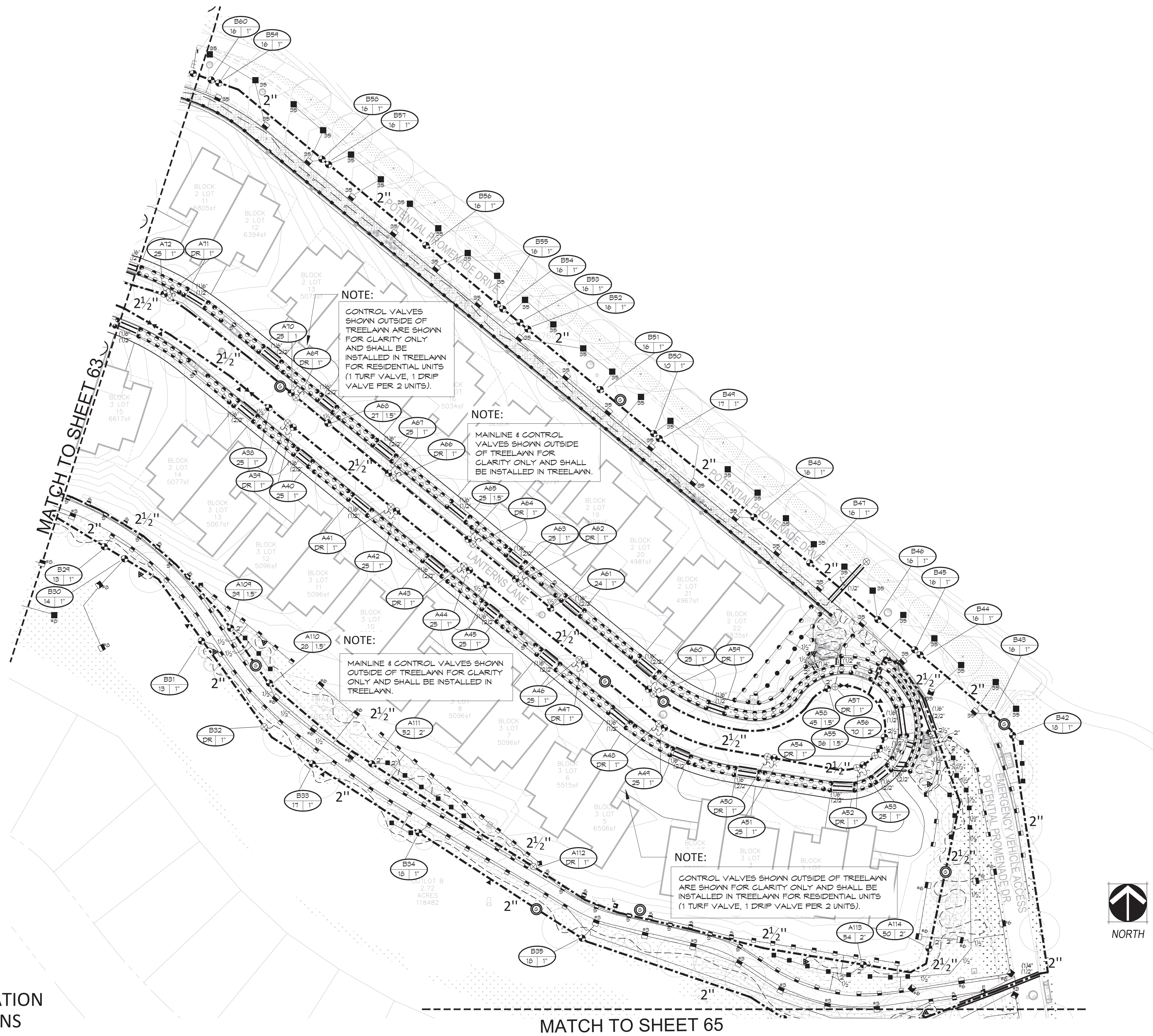
FINAL PLAT SITE PLAN 35, AMENDMENT #1

BLOCK 1, LOTS 1 THROUGH 8, BLOCK 2, LOTS 1 THROUGH 22, BLOCK 3, LOTS 1 THROUGH 24, BLOCK 4, LOTS 1 THROUGH 8, TRACTS A THROUGH E, OUTLOTS A THROUGH E ROCK CREEK RANCH FILING NO. 12A

VESTED RIGHTS

This Plan constitutes a site specific development plan as defined in Section 24-68-101, et. seq., C.R.S., and Chapter 16 of the Superior Municipal Code, available at the Superior Town Hall, 124 East Coal Creek Drive, Superior, Colorado. Such a vested right shall be valid for a period of three (3) years, pursuant to approval by the Town of Superior Board of Trustees on 23rd Day of July, 2018

NORRIS DESIGN
 Planning | Landscape Architecture | Project Promotion
 1101 Bannock Street
 Denver, Colorado 80204
 P 303.892.1166
 www.norris-design.com

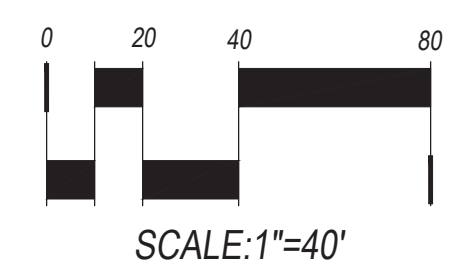


NOTE:
 CONTROL VALVES SHOWN OUTSIDE OF TREETLAWN ARE SHOWN FOR CLARITY ONLY AND SHALL BE INSTALLED IN TREETLAWN FOR RESIDENTIAL UNITS (1 TURF VALVE, 1 DRIP VALVE PER 2 UNITS).

NOTE:
 MAINLINE & CONTROL VALVES SHOWN OUTSIDE OF TREETLAWN FOR CLARITY ONLY AND SHALL BE INSTALLED IN TREETLAWN.

NOTE:
 MAINLINE & CONTROL VALVES SHOWN OUTSIDE OF TREETLAWN FOR CLARITY ONLY AND SHALL BE INSTALLED IN TREETLAWN.

NOTE:
 CONTROL VALVES SHOWN OUTSIDE OF TREETLAWN ARE SHOWN FOR CLARITY ONLY AND SHALL BE INSTALLED IN TREETLAWN FOR RESIDENTIAL UNITS (1 TURF VALVE, 1 DRIP VALVE PER 2 UNITS).



REFER TO SHEET

62	OVERALL IRRIGATION
63-68	IRRIGATION PLANS
69	IRRIGATION NOTES
69	IRRIGATION SCHEDULE

KDI

HydroSystems
 Irrigation Consulting & Water Management
 860 Tabor Street, Suite 200 Lakewood, Colorado 80401
 o: 303.980.5327 www.hydro-systems-kdi.com

ROCK CREEK RANCH FIL. NO. 12A
 FINAL PLAT SITE PLAN 35, AMENDMENT #1
 SUPERIOR, COLORADO

OWNER:
 SUPERIOR ROCK CREEK, LLC
 1440 BLAKE ST. 3320
 DENVER, CO 80202

APPLICANT:
 BOULDER CREEK
 NEIGHBORHOODS
 712 MAIN STREET
 LOUISVILLE, CO



DATE:

JANUARY 24, 2018
APRIL 18, 2018
JUNE 13, 2018
JULY 16, 2018
OCTOBER 5, 2018
OCTOBER 19, 2018

SHEET TITLE:
 IRRIGATION
 PLAN

CHECKED BY: LV
 DRAWN BY: RB/CTCM

NOT FOR CONSTRUCTION

FINAL PLAT SITE PLAN 35, AMENDMENT #1
BLOCK 1, LOTS 1 THROUGH 8, BLOCK 2, LOTS 1 THROUGH 22, BLOCK 3, LOTS 1 THROUGH 24, BLOCK 4, LOTS 1 THROUGH 8, TRACTS A THROUGH E, OUTLOTS A THROUGH E
ROCK CREEK RANCH FILING NO. 12A

VESTED RIGHTS

This Plan constitutes a site specific development plan as defined in Section 24-68-101, et. seq., C.R.S., and Chapter 16 of the Superior Municipal Code, available at the Superior Town Hall, 124 East Coal Creek Drive, Superior, Colorado. Such a vested right shall be valid for a period of three (3) years, pursuant to approval by the Town of Superior Board of Trustees on 23rd Day of July, 2018



1101 Bannock Street
 Denver, Colorado 80204
 P 303.892.1166

www.norris-design.com



REFER TO SHEET	
62	OVERALL IRRIGATION
63-68	IRRIGATION PLANS
69	IRRIGATION NOTES
69	IRRIGATION SCHEDULE

ROCK CREEK RANCH FIL. NO. 12A
 FINAL PLAT SITE PLAN 35, AMENDMENT #1
 SUPERIOR, COLORADO

OWNER:
 SUPERIOR ROCK CREEK, LLC

1440 BLAKE ST. 3320
 DENVER, CO 80202

APPLICANT:
 BOULDER CREEK NEIGHBORHOODS

712 MAIN STREET
 LOUISVILLE, CO



Know what's below.
 Call before you dig.

DATE:

- JANUARY 24, 2018
- APRIL 18, 2018
- JUNE 13, 2018
- JULY 16, 2018
- OCTOBER 5, 2018
- OCTOBER 19, 2018

SHEET TITLE:
 IRRIGATION PLAN

SHEET 65 OF 69

NOT FOR CONSTRUCTION



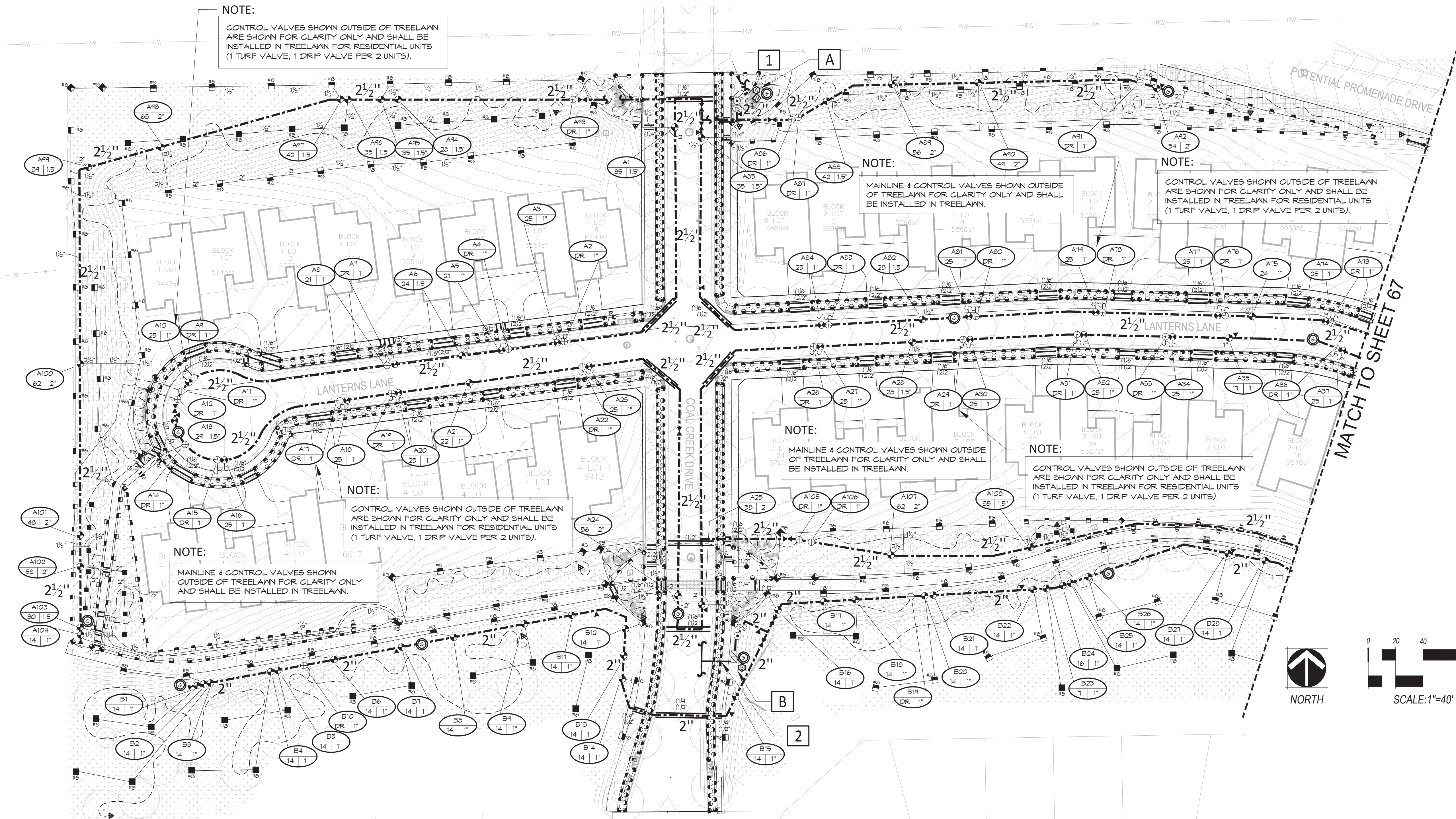
CHECKED BY: LV
 DRAWN BY: RB/CTCM

FINAL PLAT SITE PLAN 35, AMENDMENT #1

BLOCK 1, LOTS 1 THROUGH 8, BLOCK 2, LOTS 1 THROUGH 22, BLOCK 3, LOTS 1 THROUGH 24, BLOCK 4, LOTS 1 THROUGH 8, TRACTS A THROUGH E, OUTLOTS A THROUGH E

ROCK CREEK RANCH FILING NO. 12A

VESTED RIGHTS
This Plan constitutes a site specific development plan as defined in Section 24-68-101, et, seq., C.R.S., and Chapter 16 of the Superior Municipal Code, available at the Superior Town Hall, 124 East Coal Creek Drive, Superior, Colorado. Such a vested right shall be valid for a period of three (3) years, pursuant to approval by the Town of Superior Board of Trustees on 23rd Day of July, 2018



1 — POINT OF CONNECTION #1- 2"

PEAK FLOW REQUIREMENT: 70 GPM. REQUIRED STATIC PRESSURE: 88 PSI
TIE ONTO 2" COPPER STUB-OUT DOWNSTREAM OF WATER METER AT 54" DEPTH IN THIS APPROXIMATE LOCATION. BY OTHERS REFER TO CIVIL PLAN. EXTEND 2" TYPE K SOFT COPPER AT 54" MINIMUM DEPTH TO BACKFLOW PREVENTER LOCATION. INSTALL ONE 2" STOP AND WASTE VALVE, ONE 2" REDUCED PRESSURE BACKFLOW PREVENTER WITH PROTECTIVE ENCLOSURE, ONE MANUAL DRAIN VALVE, ONE FLOW SENSOR, ONE MASTER VALVE, ONE QUICK COUPLING VALVE, ONE GATE VALVE AND EXTEND PVC MAINLINE AS SHOWN. CONNECT FLOW SENSOR AND MASTER VALVE TO ASSOCIATED CONTROLLER VIA TWO-WIRE COMMUNICATION CABLE PER MANUFACTURER'S REQUIREMENTS. SEE DETAIL SHEET FOR REQUIRED PIPE LENGTHS UPSTREAM AND DOWNSTREAM OF FLOW SENSING UNIT. WORK SHALL CONFORM TO LOCAL CODE. FEES AND PERMITS ASSOCIATED WITH WORK ARE TO BE OBTAINED AND PAID FOR BY CONTRACTOR. FINAL BACKFLOW PREVENTER LOCATION SHALL BE APPROVED BY OWNER'S REPRESENTATIVE PRIOR TO INSTALLATION.

A — CONTROLLER LOCATION "A"

PEDESTAL MOUNT ONE CONTROLLER (REFER TO SCHEDULE FOR MODEL & STATION COUNT), REMOTE READY, AT INDICATED LOCATION. 120 VOLT POWER SHALL BE COORDINATED BY CONTRACTOR WITH ELECTRICAL ENGINEER AND CONTRACTOR PRIOR TO CONSTRUCTION AND MADE AVAILABLE WITHIN 50 LF. OF CONTROLLER LOCATION FROM TRANSFORMER OR RESIDENTIAL PEDESTAL. ELECTRICAL METER, WIRE/CONDUIT, STEP-DOWN TRANSFORMER (IF REQUIRED) AND POWER CONNECTION TO CONTROLLER IS BY CONTRACTOR WITH WORK CONFORMING TO LOCAL CODES. FEES AND PERMITS ASSOCIATED WITH WORK ARE TO BE OBTAINED AND PAID BY CONTRACTOR. CONNECT FLOW SENSOR AND MASTER VALVE TO ASSOCIATED CONTROLLER VIA TWO-WIRE COMMUNICATION CABLE PER MANUFACTURER'S REQUIREMENTS. FINAL CONTROLLER LOCATION SHALL BE APPROVED BY OWNER OR OWNER'S REPRESENTATIVE PRIOR TO INSTALLATION. MOUNT ONE WEATHER SENSOR ON POLE WHERE THERE IS 20 FT. OF CLEARANCE FROM ANY OVERHANG OR OBSTRUCTING FEATURE. WEATHER SENSOR RECEIVER IS IN CONTROLLER ENCLOSURE. FINAL WEATHER SENSOR LOCATION SHALL BE APPROVED BY OWNER OR OWNER'S REPRESENTATIVE PRIOR TO INSTALLATION.

B — CONTROLLER LOCATION "B"

PEDESTAL MOUNT ONE CONTROLLER (REFER TO SCHEDULE FOR MODEL & STATION COUNT), REMOTE READY, AT INDICATED LOCATION. 120 VOLT POWER SHALL BE COORDINATED BY CONTRACTOR WITH ELECTRICAL ENGINEER AND CONTRACTOR PRIOR TO CONSTRUCTION AND MADE AVAILABLE WITHIN 50 LF. OF CONTROLLER LOCATION FROM TRANSFORMER OR RESIDENTIAL PEDESTAL. ELECTRICAL METER, WIRE/CONDUIT, STEP-DOWN TRANSFORMER (IF REQUIRED) AND POWER CONNECTION TO CONTROLLER IS BY CONTRACTOR WITH WORK CONFORMING TO LOCAL CODES. FEES AND PERMITS ASSOCIATED WITH WORK ARE TO BE OBTAINED AND PAID BY CONTRACTOR. CONNECT FLOW SENSOR AND MASTER VALVE TO ASSOCIATED CONTROLLER VIA TWO-WIRE COMMUNICATION CABLE PER MANUFACTURER'S REQUIREMENTS. FINAL CONTROLLER LOCATION SHALL BE APPROVED BY OWNER OR OWNER'S REPRESENTATIVE PRIOR TO INSTALLATION. MOUNT ONE WEATHER SENSOR ON POLE WHERE THERE IS 20 FT. OF CLEARANCE FROM ANY OVERHANG OR OBSTRUCTING FEATURE. WEATHER SENSOR RECEIVER IS IN CONTROLLER ENCLOSURE. FINAL WEATHER SENSOR LOCATION SHALL BE APPROVED BY OWNER OR OWNER'S REPRESENTATIVE PRIOR TO INSTALLATION.

2 — POINT OF CONNECTION #2- 1"

PEAK FLOW REQUIREMENT: 18 GPM. REQUIRED STATIC PRESSURE: 80 PSI
TIE ONTO 1" COPPER STUB-OUT DOWNSTREAM OF WATER METER AT 54" DEPTH IN THIS APPROXIMATE LOCATION. BY OTHERS REFER TO CIVIL PLAN. EXTEND 1" TYPE K SOFT COPPER AT 54" MINIMUM DEPTH TO BACKFLOW PREVENTER LOCATION. INSTALL ONE 1" STOP AND WASTE VALVE, ONE 1" REDUCED PRESSURE BACKFLOW PREVENTER WITH PROTECTIVE ENCLOSURE, ONE MANUAL DRAIN VALVE, ONE FLOW SENSOR, ONE MASTER VALVE, ONE QUICK COUPLING VALVE, ONE GATE VALVE AND EXTEND PVC MAINLINE AS SHOWN. CONNECT FLOW SENSOR AND MASTER VALVE TO ASSOCIATED CONTROLLER VIA TWO-WIRE COMMUNICATION CABLE PER MANUFACTURER'S REQUIREMENTS. SEE DETAIL SHEET FOR REQUIRED PIPE LENGTHS UPSTREAM AND DOWNSTREAM OF FLOW SENSING UNIT. WORK SHALL CONFORM TO LOCAL CODE. FEES AND PERMITS ASSOCIATED WITH WORK ARE TO BE OBTAINED AND PAID FOR BY CONTRACTOR. FINAL BACKFLOW PREVENTER LOCATION SHALL BE APPROVED BY OWNER'S REPRESENTATIVE PRIOR TO INSTALLATION.

REFER TO SHEET	OVERALL IRRIGATION
62	IRRIGATION PLANS
63-68	IRRIGATION NOTES
69	IRRIGATION SCHEDULE
69	

KDI
HydroSystems
Irrigation Consulting & Water Management
860 Tabor Street, Suite 200 Lakewood, Colorado 80401
o: 303.980.5327 www.hydro-systems.com

ROCK CREEK RANCH FIL. NO. 12A
FINAL PLAT SITE PLAN 35, AMENDMENT #1
SUPERIOR, COLORADO

OWNER:
SUPERIOR ROCK CREEK, LLC
1440 BLAKE ST. 3320
DENVER, CO 80202
APPLICANT:
BOULDER CREEK
NEIGHBORHOODS
712 MAIN STREET
LOUISVILLE, CO

811
Know what's below.
Call before you dig.

DATE:

JANUARY 24, 2018
APRIL 18, 2018
JUNE 13, 2018
JULY 16, 2018
OCTOBER 5, 2018
OCTOBER 19, 2018

SHEET TITLE:
IRRIGATION
PLAN

NOT FOR CONSTRUCTION

FINAL PLAT SITE PLAN 35, AMENDMENT #1

BLOCK 1, LOTS 1 THROUGH 8, BLOCK 2, LOTS 1 THROUGH 22, BLOCK 3, LOTS 1 THROUGH 24, BLOCK 4, LOTS 1 THROUGH 8, TRACTS A THROUGH E, OUTLOTS A THROUGH E
ROCK CREEK RANCH FILING NO. 12A

VESTED RIGHTS
 This Plan constitutes a site specific development plan as defined in Section 24-68-101, et, seq., C.R.S., and Chapter 16 of the Superior Municipal Code, available at the Superior Town Hall, 124 East Coal Creek Drive, Superior, Colorado. Such a vested right shall be valid for a period of three (3) years, pursuant to approval by the Town of Superior Board of Trustees on 23rd Day of July, 2018



1101 Bannock Street
 Denver, Colorado 80204
 P 303.892.1166

www.norris-design.com

ROCK CREEK RANCH FIL. NO. 12A
 FINAL PLAT SITE PLAN 35, AMENDMENT #1
 SUPERIOR, COLORADO

OWNER:
 SUPERIOR ROCK CREEK, LLC
 1440 BLAKE ST. 3320
 DENVER, CO 80202

APPLICANT:
 BOULDER CREEK
 NEIGHBORHOODS
 712 MAIN STREET
 LOUISVILLE, CO



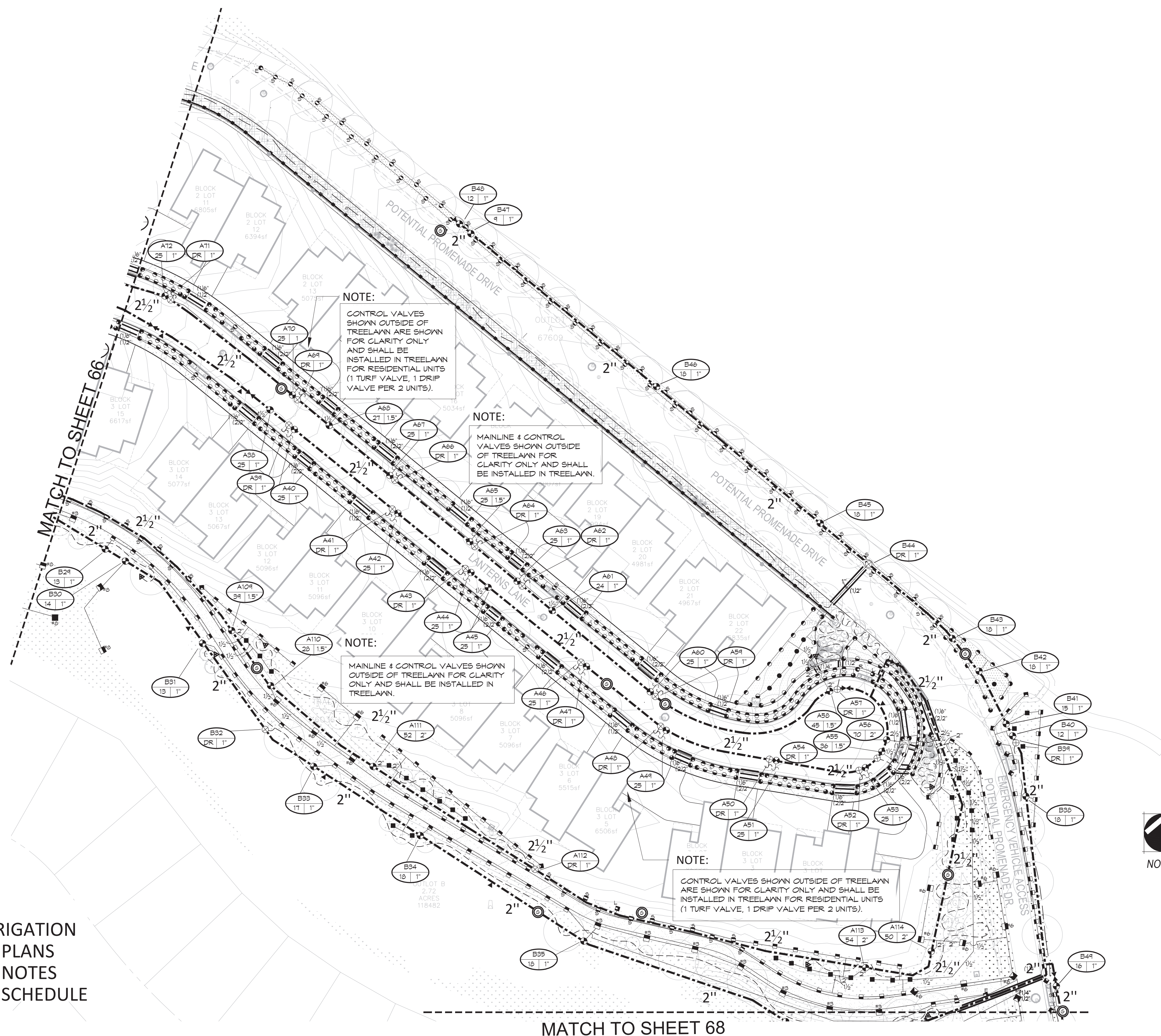
Know what's below.
 Call before you dig.

DATE:

- JANUARY 24, 2018
- APRIL 18, 2018
- JUNE 13, 2018
- JULY 16, 2018
- OCTOBER 5, 2018
- OCTOBER 19, 2018

SHEET TITLE:
 IRRIGATION
 PLAN

SHEET 67 OF 69



NOTE:
 CONTROL VALVES SHOWN OUTSIDE OF TREETLAWN ARE SHOWN FOR CLARITY ONLY AND SHALL BE INSTALLED IN TREETLAWN FOR RESIDENTIAL UNITS (1 TURF VALVE, 1 DRIP VALVE PER 2 UNITS).

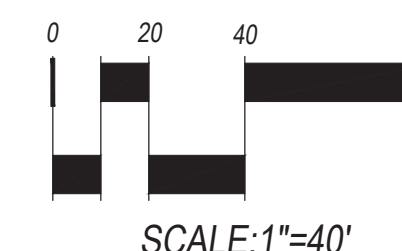
NOTE:
 MAINLINE & CONTROL VALVES SHOWN OUTSIDE OF TREETLAWN FOR CLARITY ONLY AND SHALL BE INSTALLED IN TREETLAWN.

NOTE:
 MAINLINE & CONTROL VALVES SHOWN OUTSIDE OF TREETLAWN FOR CLARITY ONLY AND SHALL BE INSTALLED IN TREETLAWN.

NOTE:
 CONTROL VALVES SHOWN OUTSIDE OF TREETLAWN ARE SHOWN FOR CLARITY ONLY AND SHALL BE INSTALLED IN TREETLAWN FOR RESIDENTIAL UNITS (1 TURF VALVE, 1 DRIP VALVE PER 2 UNITS).

REFER TO SHEET

62	OVERALL IRRIGATION
63-68	IRRIGATION PLANS
69	IRRIGATION NOTES
69	IRRIGATION SCHEDULE



NOT FOR CONSTRUCTION

CHECKED BY: LV
 DRAWN BY: RB/CTCM