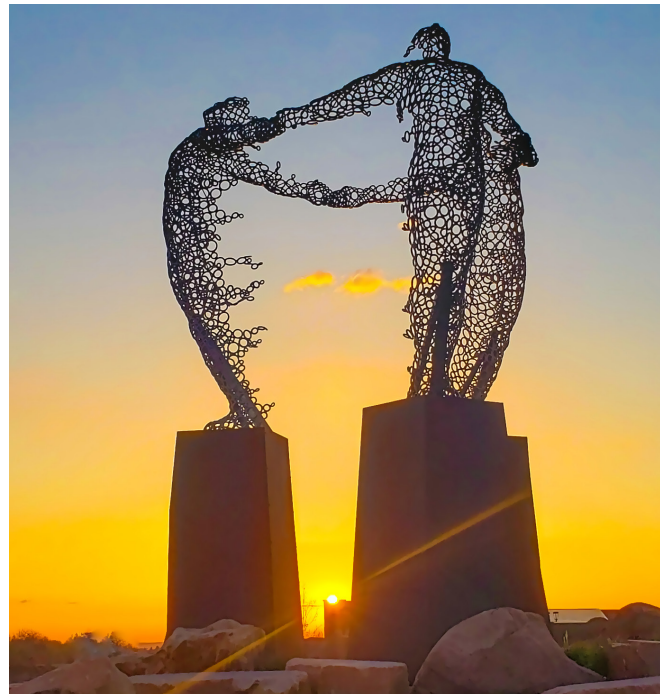


# Power Your Home with Solar Energy

*The Town of Superior encourages you to go solar and support the town's commitment to increase carbon-free energy in all sectors. Not sure how much solar you'll need? Consider the following!*

## Start with Efficiency

One of the best ways to lower the upfront cost of renewable energy is to reduce the total amount of energy you consume. This could allow you to invest in a smaller solar panel system or cover more of your total energy use with the renewable energy you produce. Check out the programs below to see how you can put efficiency first!



### Home Energy Squad

[xcelenergy.com/HomeEnergySquad](http://xcelenergy.com/HomeEnergySquad)



### Insulation and Air Sealing

[xcelenergy.com/COInsulation](http://xcelenergy.com/COInsulation)



### Lighting Rebates

[xcelenergy.com/HomeLighting](http://xcelenergy.com/HomeLighting)



### AC Rewards

[xcelenergy.com/ACRewards](http://xcelenergy.com/ACRewards)



### Refrigerator Recycling

[xcelenergy.com/fridge](http://xcelenergy.com/fridge)



### Smart Thermostats

[xcelenergy.com/SmartThermostats](http://xcelenergy.com/SmartThermostats)

## Understand Your Home's Electricity Usage

To know how much solar you'll need, find out how much electricity your home uses. You can look back at your electricity bills to understand your average electricity use through My Account ([xcelenergy.com](http://xcelenergy.com)).

Some homes may not have enough roof space to produce 100% of electricity usage, but residents can still benefit from rooftop solar even if they only produce a portion of their total electricity demand!



## Install Solar on Your New Home

You can install solar panels that produce up to 200% of your home's electricity usage; the table shows the average electricity usage based on home size.

Keep in mind that your electricity usage could increase if you are planning to add electric vehicle charging or if you are planning to replace gas appliances with electric appliances.

Home Size (Square Feet)	Annual kWh Usage	200% of Usage
0-500	3,199	6,398
501-1000	4,548	9,096
1001-1500	6,071	12,142
1501-2000	7,333	14,666
2001-2500	8,433	16,866
2501-3000	9,092	18,184
3001-3500	10,000	20,000
3501-4000	10,907	21,814
4000 or more	12,455	24,910

<https://www.xcelenergy.com/staticfiles/xcel-responsive/Programs%20and%20Rebates/Residential/CO-Residential-New-Home-Estimator.pdf>

## Superior Supports Solar

Superior is a designated Bronze SolSmart community, meaning solar energy is more accessible and affordable to Superior residents and businesses. Advancing solar energy benefits the Superior community, by not only reducing our carbon footprint, but also helping us become more resilient and adaptive.

*\*Permit fees of \$300 are waived.*

Explore Xcel Energy's resources to help you get started on your solar journey at [xcelenergy.com/renewables!](http://xcelenergy.com/renewables)



**PARTNERS IN ENERGY**  
An Xcel Energy Community Collaboration