

**CONSULTANTS**

CIVIL  
CIVIL RESOURCES, LLC  
8300 COLORADO BLVD, SUITE 200  
FIRESTONE, CO 80504  
JIM BRZOSZTOWICZ, P.E.  
955-829-1416

STRUCTURAL  
MARTIN MARTIN  
12460 W. COLFAX AVENUE  
LAKEWOOD, CO 80215  
TIMOTHY LACK, P.E.  
720-544-2204

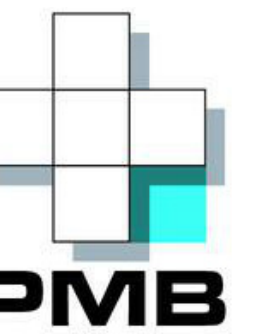
MEP  
AFFILIATED ENGINEERS, INC.  
1726 CHAMPA STREET, SUITE 100  
DENVER, CO 80202  
BLYTHE VOGT, P.E.  
720-560-8516

LANDSCAPING  
DIG STUDIO  
1521 15TH STREET  
DENVER, CO 80202  
BILL VITEK, P.L.A., FASLA  
720-328-1986

**PROJECT**  
**SUPERIOR TOWN CENTER**  
**FINAL DEVELOPMENT**  
**PLAN 11**

**SUPERIOR COLORADO**  
**LIFE SCIENCES**

SUPERIOR TOWN CENTER,  
SUPERIOR, CO 80027



**PACIFIC MEDICAL**  
**BUILDINGS**

3394 CARMEL MOUNTAIN RD,  
SUITE #200  
SAN DIEGO, CA 92121

**Vested Rights:**  
This Plan constitutes a Site Specific Development Plan as defined in Section 24-65-101, et. seq., C.R.S., and Chapter 15 of the Superior Municipal Code available at the Superior Town Hall, 124 East Coal Creek Drive, Superior, Colorado. The term and other conditions of these vested rights are further described in the development agreement dated March 11, 2013.

**ISSUE CHART**

MARK	ISSUE	DATE
5	TOWN COMMENTS	8/5/2022
4	TOWN COMMENTS	6/16/2022
3	TOWN COMMENTS	6/01/2022
2	TOWN COMMENTS	5/25/2022
1	FINAL DEVELOPMENT PLAN	3/15/2022

Job Number 162146.000

TITLE

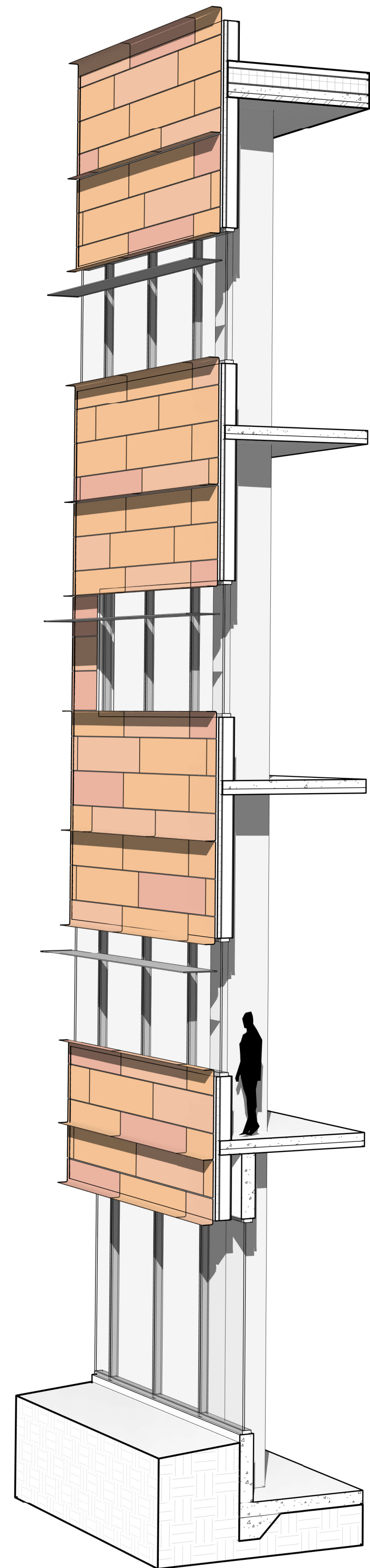
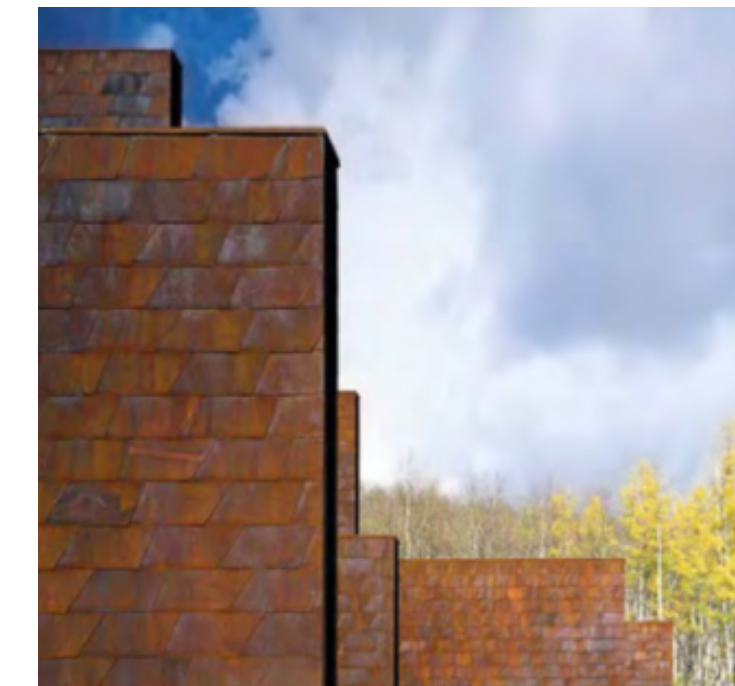
**WALL SECTION -**  
**OPTION 1**

SHEET NUMBER

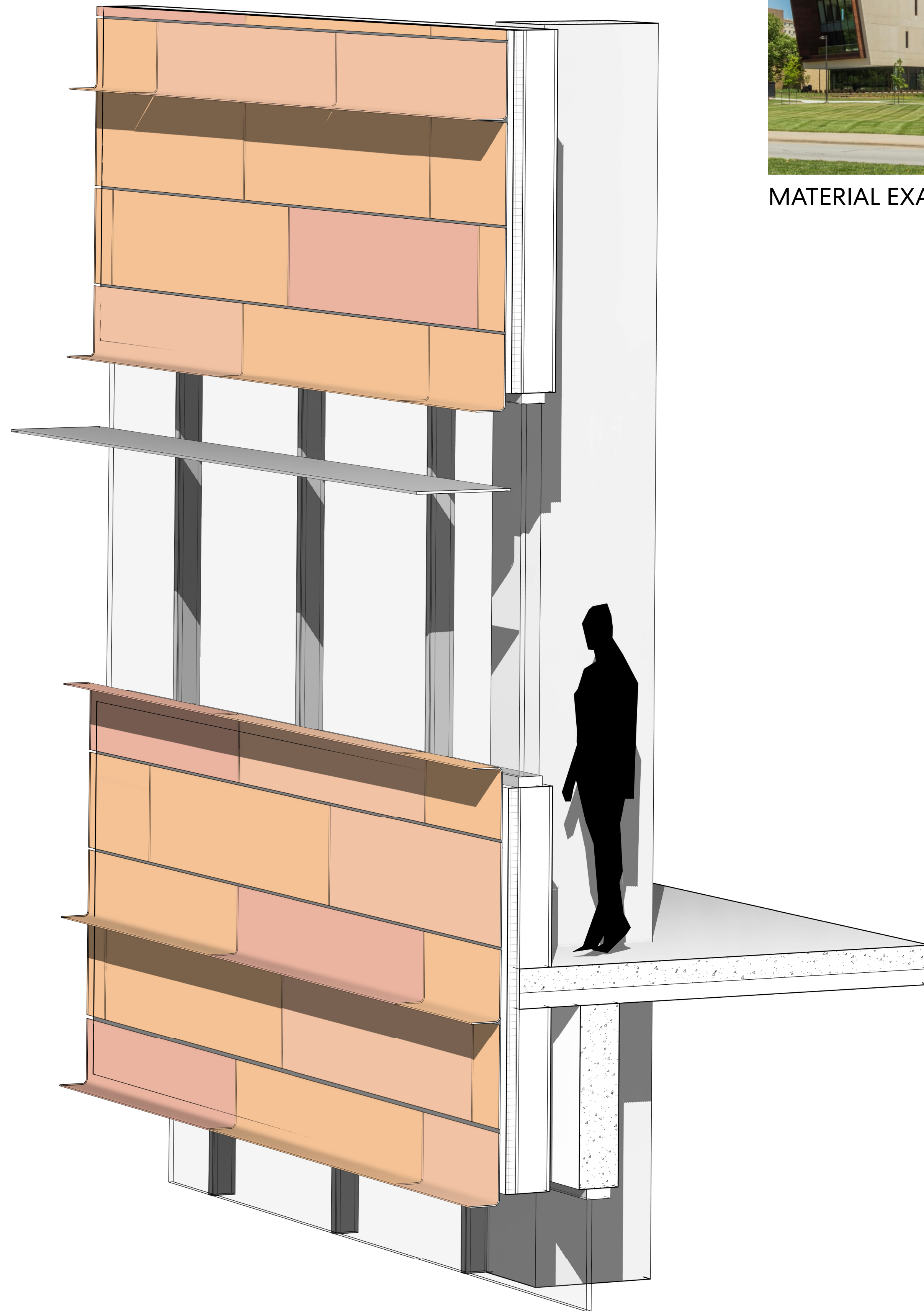
**A7.1**



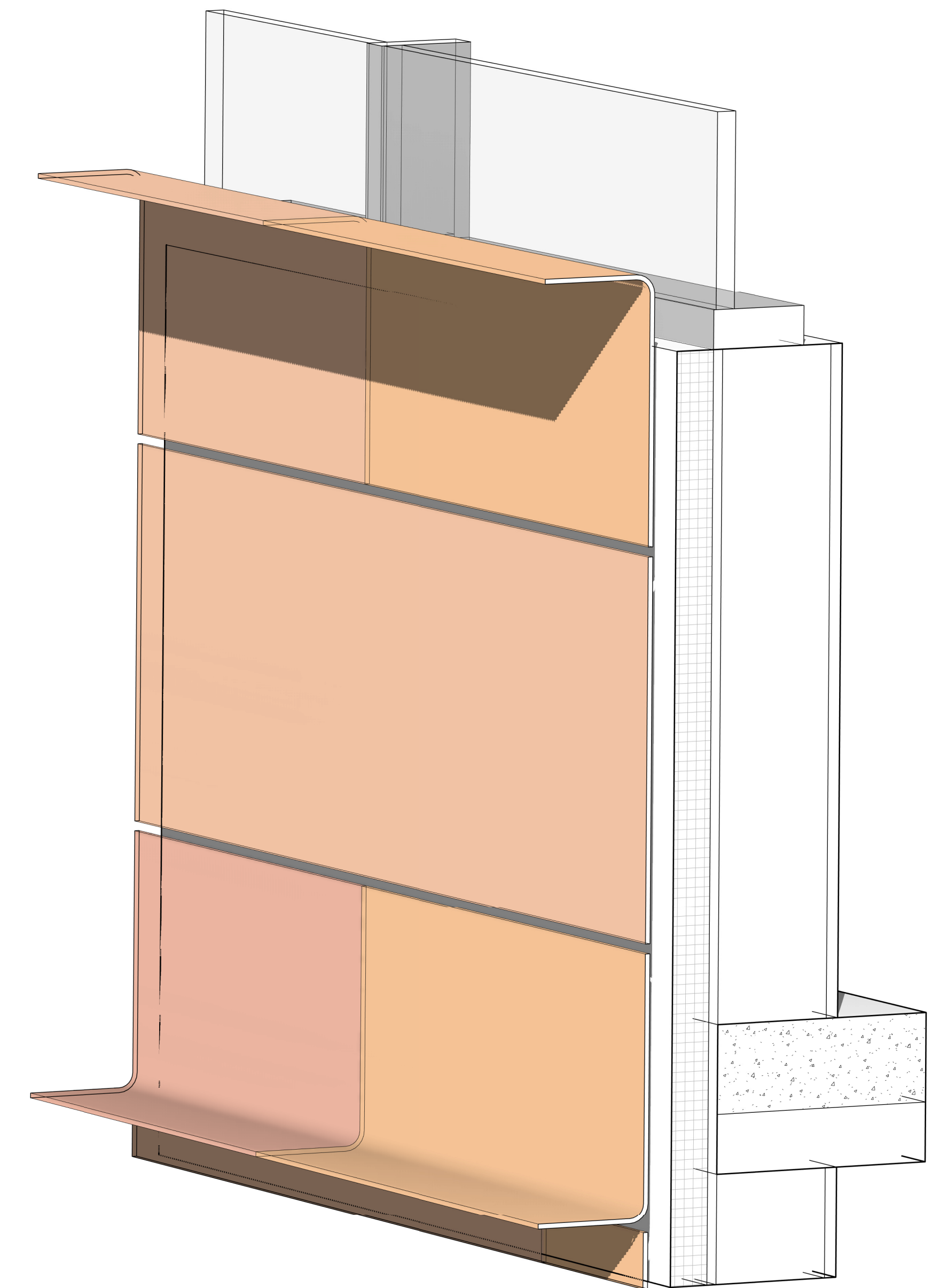
MATERIAL EXAMPLES



① CONCEPTUAL WALL SECTION - OPTION 1



② LARGE SECTION - OPTION 1



③ DETAIL SECTION - OPTION 1