



DEN COALTON  
1601 COALTON ROAD  
SUPERIOR, CO 80027  
BOULDER COUNTY

Prepared By:  
**RLS**  
RELIANT LAND SERVICES  
8170 N 86th Place, Suite 103  
Scottsdale, Arizona 85258  
(602) 453-0050

**KEY MAP**



**EXISTING**



**PROPOSED**

**VIEW 1 - FROM NORTH OF REPLACEMENT LIGHT POLE**



LOOKING SOUTHWEST FROM NORTH OF REPLACEMENT LIGHT POLE (SEE KEY MAP)

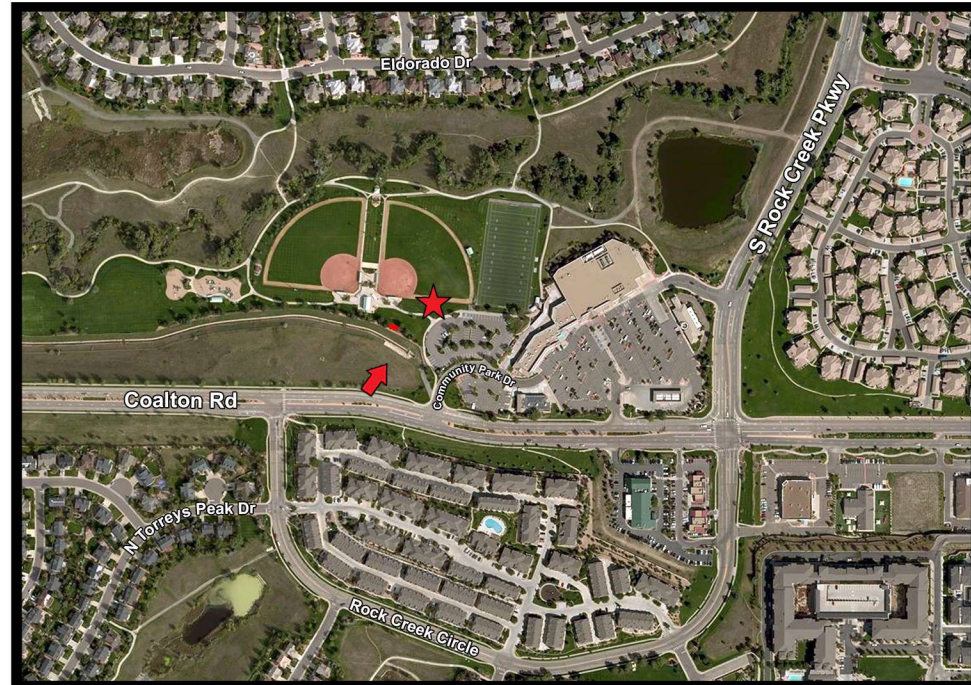
Accuracy of photo simulation based upon information provided by project applicant. The proposed installation is an artistic representation, and not intended to be an exact reproduction. The final installation will have cables, cable ports, and various attachments, such as antennas, nuts, and bolts. Every effort will be made to disguise these components and they will not be readily apparent to the casual observer or passerby. However, upon close scrutiny, the true nature of the installation will be apparent.



**DEN COALTON**  
1601 COALTON ROAD  
SUPERIOR, CO 80027  
BOULDER COUNTY

Prepared By:  
**RLS**  
RELIANT LAND SERVICES  
8170 N 86th Place, Suite 103  
Scottsdale, Arizona 85258  
(602) 453-0050

**KEY MAP**



**PROPOSED**

**VIEW 2 - FROM SOUTH OF REPLACEMENT LIGHT POLE**



**EXISTING**



LOOKING NORTHEAST FROM COALTON ROAD SIDEWALK (SEE KEY MAP)

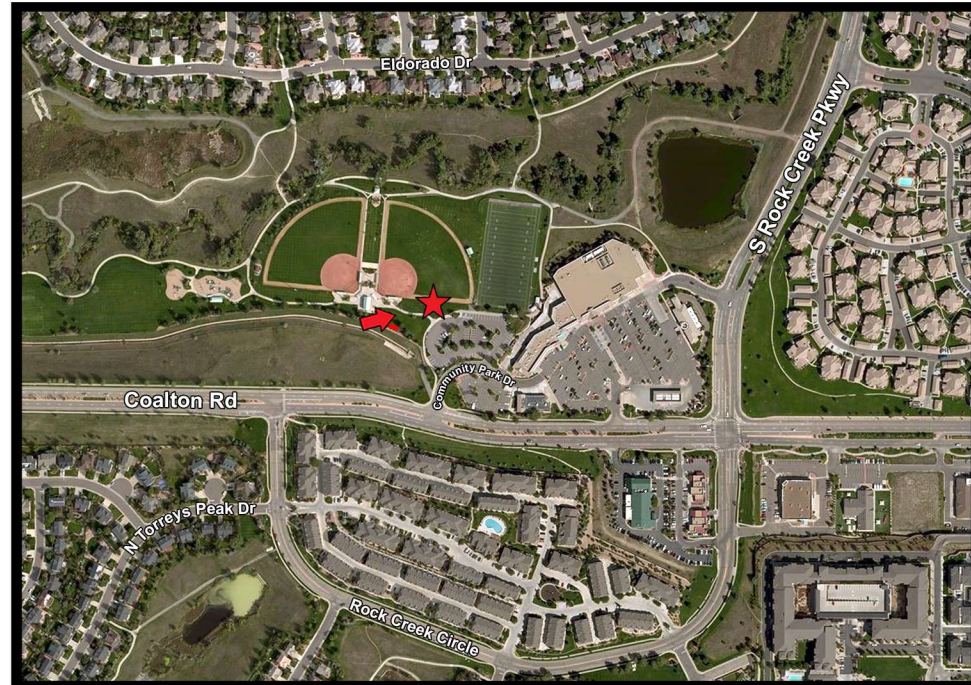
Accuracy of photo simulation based upon information provided by project applicant. The proposed installation is an artistic representation, and not intended to be an exact reproduction. The final installation will have cables, cable ports, and various attachments, such as antennas, nuts, and bolts. Every effort will be made to disguise these components and they will not be readily apparent to the casual observer or passerby. However, upon close scrutiny, the true nature of the installation will be apparent.



DEN COALTON  
1601 COALTON ROAD  
SUPERIOR, CO 80027  
BOULDER COUNTY

Prepared By:  
**RLS**  
RELIANT LAND SERVICES  
8170 N 86th Place, Suite 103  
Scottsdale, Arizona 85258  
(602) 453-0050

**KEY MAP**



**EXISTING**



**PROPOSED**

**VIEW 3 - FROM WEST OF REPLACEMENT LIGHT POLE**



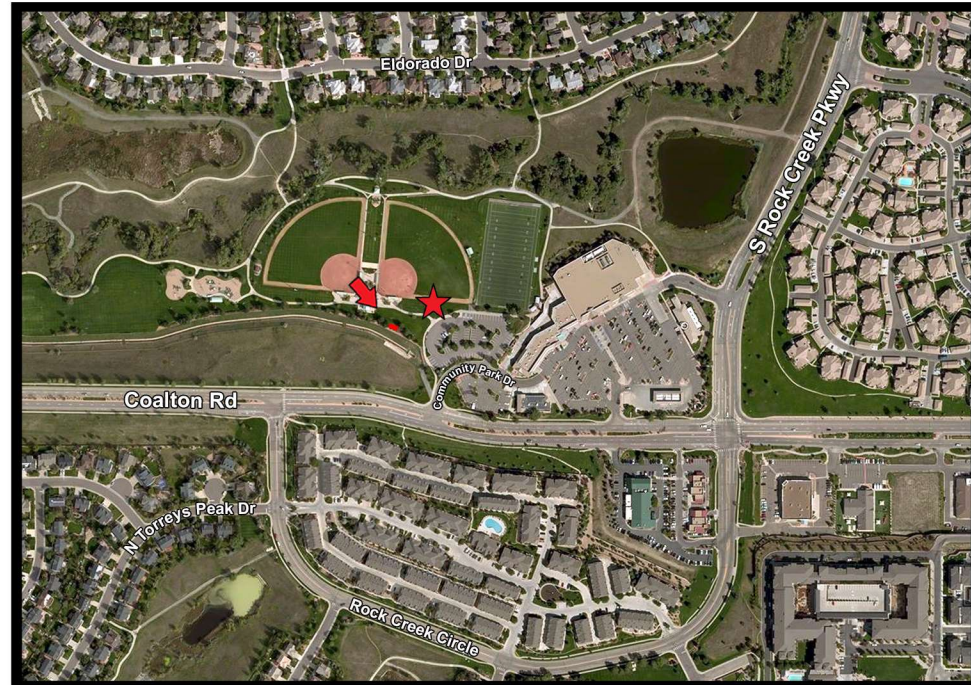
Accuracy of photo simulation based upon information provided by project applicant. The proposed installation is an artistic representation, and not intended to be an exact reproduction. The final installation will have cables, cable ports, and various attachments, such as antennas, nuts, and bolts. Every effort will be made to disguise these components and they will not be readily apparent to the casual observer or passerby. However, upon close scrutiny, the true nature of the installation will be apparent.



DEN COALTON  
1601 COALTON ROAD  
SUPERIOR, CO 80027  
BOULDER COUNTY

Prepared By:  
**RLS**  
RELIANT LAND SERVICES  
8170 N 86th Place, Suite 103  
Scottsdale, Arizona 85258  
(602) 453-0050

**KEY MAP**



**EXISTING**



**PROPOSED**

**VIEW 4 - FROM NORTHWEST OF NEW PLATFORM**



LOOKING SOUTHEAST TOWARDS NEW PLATFORM ENCLOSURE FROM CONCESSION STAND (SEE KEY MAP)

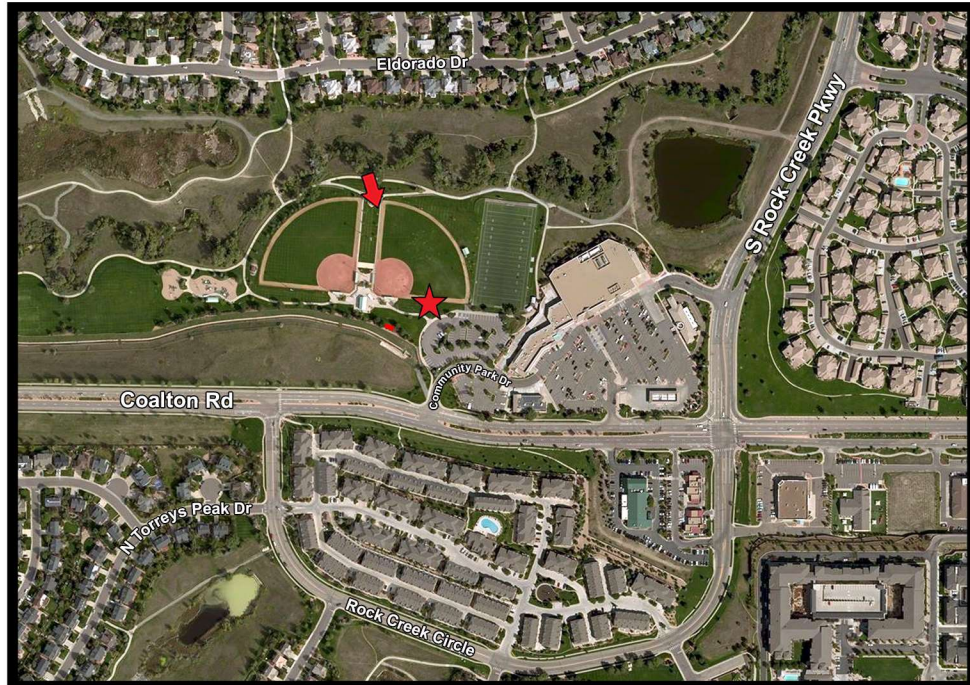
Accuracy of photo simulation based upon information provided by project applicant. The proposed installation is an artistic representation, and not intended to be an exact reproduction. The final installation will have cables, cable ports, and various attachments, such as antennas, nuts, and bolts. Every effort will be made to disguise these components and they will not be readily apparent to the casual observer or passerby. However, upon close scrutiny, the true nature of the installation will be apparent.



DEN COALTON  
1601 COALTON ROAD  
SUPERIOR, CO 80027  
BOULDER COUNTY

Prepared By:  
**RLS**  
RELIANT LAND SERVICES  
8170 N 86th Place, Suite 103  
Scottsdale, Arizona 85258  
(602) 453-0050

**KEY MAP**

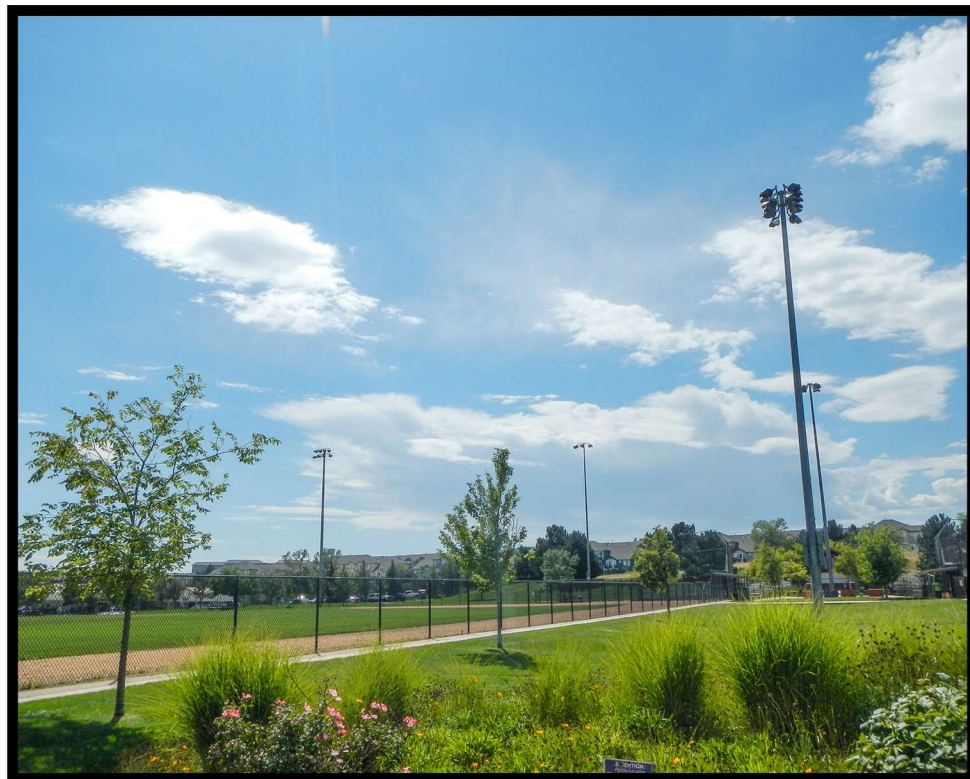


**PROPOSED**

**VIEW 5 - FROM NORTH OF REPLACEMENT LIGHT POLE**



**EXISTING**



LOOKING SOUTH FROM THE PAVILLION (SEE KEY MAP)

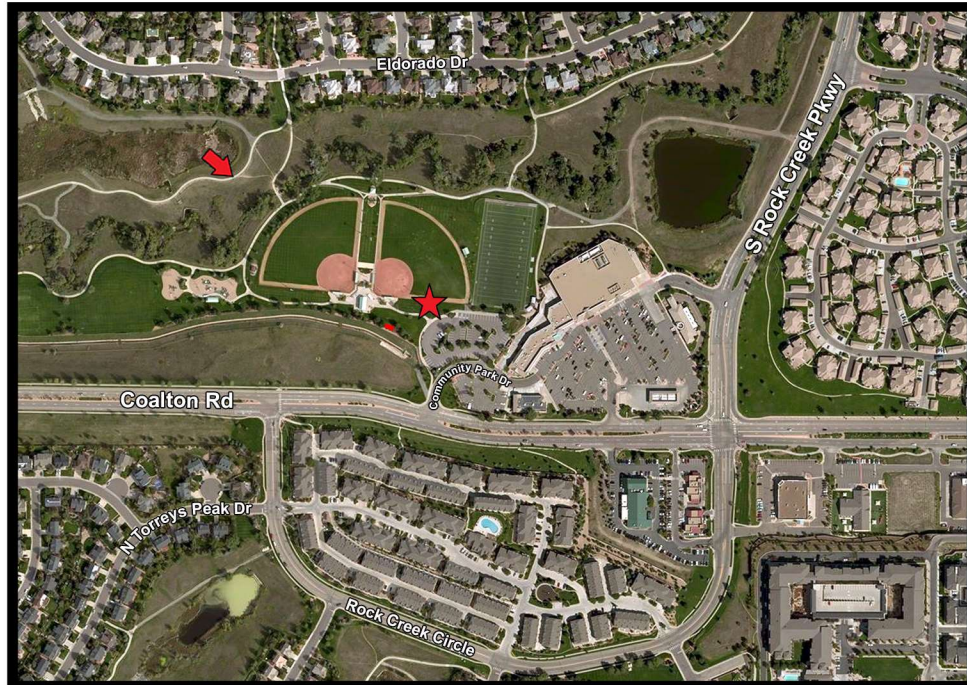
Accuracy of photo simulation based upon information provided by project applicant. The proposed installation is an artistic representation, and not intended to be an exact reproduction. The final installation will have cables, cable ports, and various attachments, such as antennas, nuts, and bolts. Every effort will be made to disguise these components and they will not be readily apparent to the casual observer or passerby. However, upon close scrutiny, the true nature of the installation will be apparent.



DEN COALTON  
1601 COALTON ROAD  
SUPERIOR, CO 80027  
BOULDER COUNTY

Prepared By:  
**RLS**  
RELIANT LAND SERVICES  
8170 N 86th Place, Suite 103  
Scottsdale, Arizona 85258  
(602) 453-0050

**KEY MAP**



**EXISTING**



**PROPOSED**

**VIEW 6 - FROM NORTHWEST OF REPLACEMENT LIGHT POLE**



Accuracy of photo simulation based upon information provided by project applicant. The proposed installation is an artistic representation, and not intended to be an exact reproduction. The final installation will have cables, cable ports, and various attachments, such as antennas, nuts, and bolts. Every effort will be made to disguise these components and they will not be readily apparent to the casual observer or passerby. However, upon close scrutiny, the true nature of the installation will be apparent.