

**LEGEND**

FDP LIMIT LINE	CONCRETE - PAVEMENT 1	KIDS PLAY AREA
EXISTING CONTOURS	SPECIALTY PAVERS - PAVEMENT 2	
	ASPHALT - PAVEMENT 3	

**SYMBOL KEY - SEED AND LANDSCAPE AREAS**

NATIVE MIDGRASS MIX	ORNAMENTAL PLANTING BED
TURF GRASS SEED MIX	<b>SITE PARKING</b>
TURF GRASS SOD	PARKING (OFF-STREET): (89) STANDARD, (4) ADA
	PARKING (ON-STREET): (32) STANDARD, (2) ADA

NO.	DATE	DESCRIPTION	BY
1	2017.06.13	FDP SUBMITTAL #1	A
2	2017.07.28	FDP SUBMITTAL #2	JA
3	2017.08.18	FDP SUBMITTAL #3	JA

COMPUTER FILE MANAGEMENT	
FILE NAME:	R:\116.854.001 (Superior Town Park)\Dwg\FDP - PARKS ONLY 2ND SUBMITTAL\STCP_FDP1_L60-OVERALL.dwg
CTB FILE:	
PLOT DATE:	11/14/2017 1:59 PM
THIS DRAWING IS CURRENT AS OF PLOT DATE AND MAY BE SUBJECT TO CHANGE.	

PREPARED BY:

FOR AND ON BEHALF OF:  
 MATRIX DESIGN GROUP, INC.  
 PROJECT No. 16.854.001

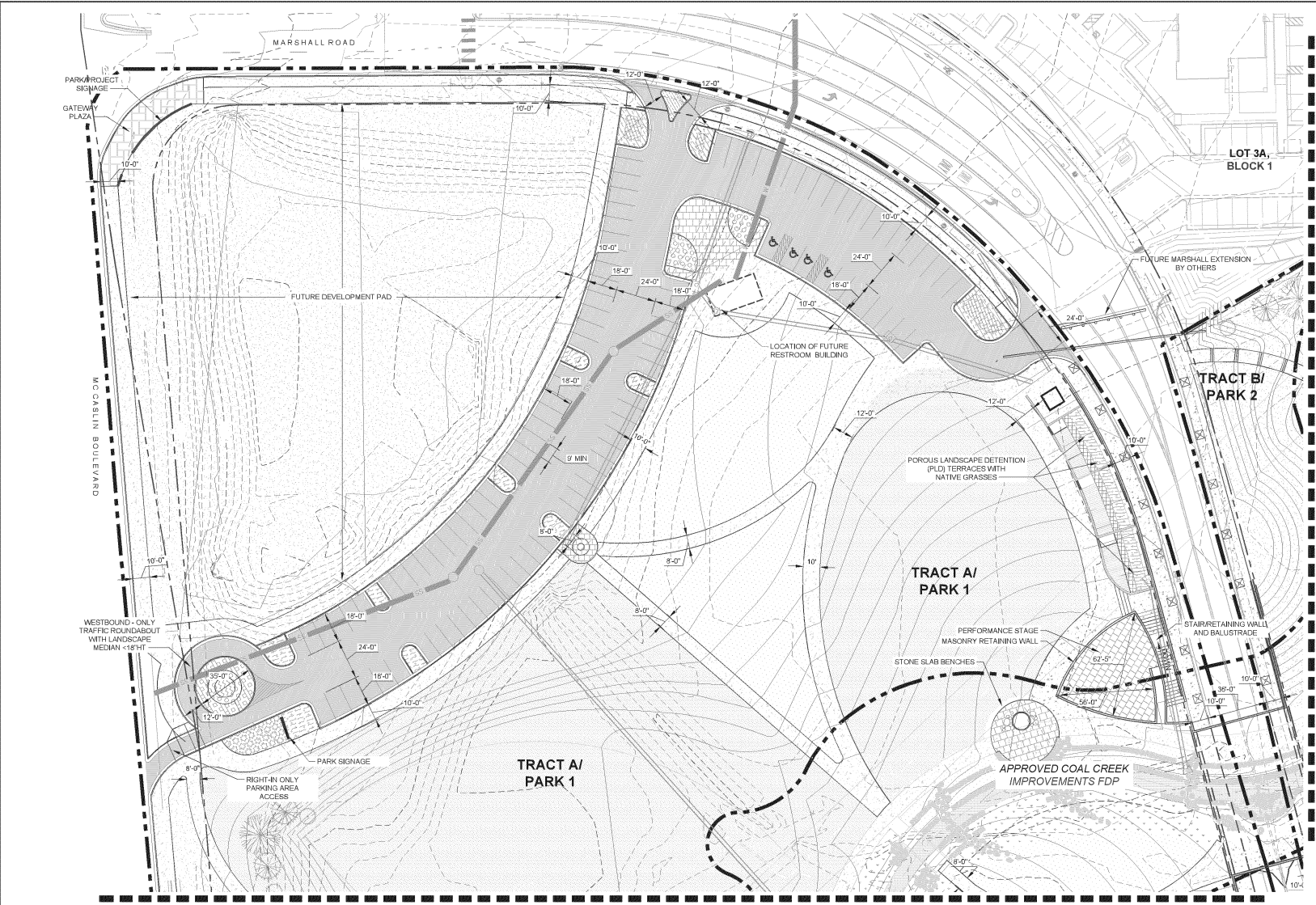
SEAL

**SUPERIOR TOWN CENTER FDP 1,  
 PHASE 6 FOR PARKS 1 & 2**

TOWN OF SUPERIOR  
 COLORADO

**OVERALL SITE PLAN**

DESIGNED BY:	IA	SCALE:	DATE ISSUED:	2017.08.18	DRAWING No.:
DRAWN BY:	CV	1"=30'	1"-30"	2 OF 26	LS-0
CHECKED BY:	IA	VERT.	SHEET		



**SYMBOL KEY**

[Symbol]	FDP LIMIT LINE
[Symbol]	CONCRETE - PAVEMENT 1
[Symbol]	SPECIALTY PAVERS - PAVEMENT 2
[Symbol]	ASPHALT - PAVEMENT 3
[Symbol]	ODS PLAY AREA

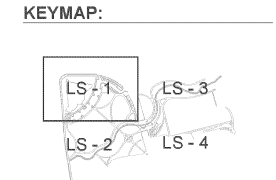
**SYMBOL KEY: SEED AND LANDSCAPE AREAS**

[Symbol]	NATIVE MIDGRASS MIX
[Symbol]	TURF GRASS SEED MIX
[Symbol]	TURF GRASS SOO
[Symbol]	ORNAMENTAL PLANTING BED

**PARKING TABLE**

PARKING (OFF-STREET)	(82) STANDARD
	(4) ADA
PARKING (ON-STREET)	(0) STANDARD
	(0) ADA

\* PUBLIC ART WILL BE INCORPORATED TO BOTH PARKS 1 & 2 AS APPROVED BY THE TOWN.



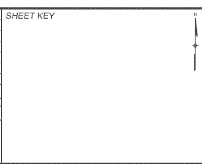
REFERENCE DRAWINGS	NO.	DATE	DESCRIPTION	BY
1	2017.08.13	FDP SUBMITTAL #1		JA
2	2017.07.28	FDP SUBMITTAL #2		JA
3	2017.08.18	FDP SUBMITTAL #3		JA

NO.	DATE	DESCRIPTION	BY

**COMPUTER FILE MANAGEMENT**

FILE NAME: R:\116.854.001 (Superior Town Park)\Dwg\FDP - PARKS ONLY 2ND SUBMITTAL\STOP\_FDP1\_L1-SITE.dwg  
 C718 FILE:  
 PLOT DATE: 11/13/2017 3:44 PM  
 THIS DRAWING IS CURRENT AS OF PLOT DATE AND MAY BE SUBJECT TO CHANGE.



PREPARED BY:

FOR AND ON BEHALF OF  
 MATRIX DESIGN GROUP, INC.  
 PROJECT No. 16.854.001

**SEAL**

DESIGNED BY	IA	SCALE	DATE ISSUED	2017.08.18	DRAWING No.
DRAWN BY	CV	FIGURE	1-30		
CHECKED BY	IA	SHEET	3	OF 20	LS-1

**SUPERIOR TOWN CENTER FDP 1, PHASE 6 FOR PARKS 1 & 2**

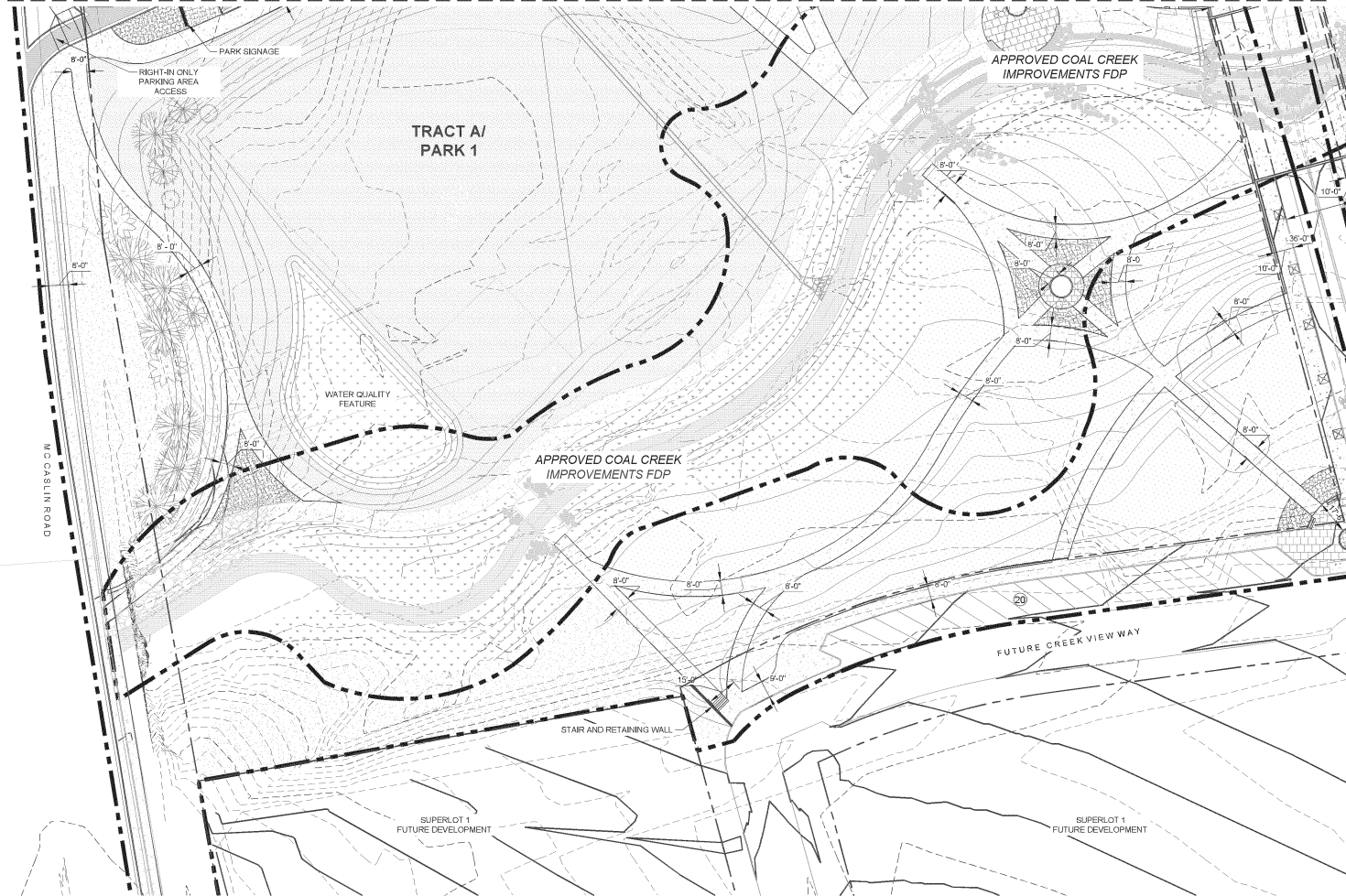
TOWN OF SUPERIOR COLORADO

**SITE PLAN (NORTHWEST)**



Know what's below.  
Call before you dig.

MATCH LINE FOR SHT LS - 1



**SYMBOL KEY**

- POP LIMIT LINE
- CONCRETE - PAVEMENT 1
- SPECIALTY PAVERS - PAVEMENT 2
- ASPHALT - PAVEMENT 3
- KIDS PLAY AREA

**SYMBOL KEY - SEED AND LANDSCAPE AREAS**

- NATIVE MIDGRASS MIX
- TUFF GRASS SEED MIX
- TUFF GRASS SOD
- ORNAMENTAL PLANTING BED

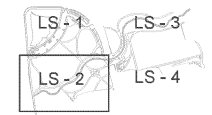
**PARKING TABLE**

PARKING (OFF-STREET)	(0) STANDARD
	(0) ADA
PARKING (ON-STREET)	(15) STANDARD
	(1) ADA

MATCH LINE FOR SHT LS - 4

\* PUBLIC ART WILL BE INCORPORATED TO BOTH PARKS 1 & 2 AS APPROVED BY THE TOWN.

KEYMAP:



REFERENCE DRAWINGS	NO.	DATE	DESCRIPTION	BY
1	2017.06.13	FDP SUBMITTAL #1		JA
2	2017.07.28	FDP SUBMITTAL #2		JA
3	2017.08.19	FDP SUBMITTAL #3		JA

No.	DATE	DESCRIPTION	BY

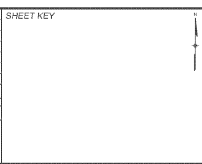
**COMPUTER FILE MANAGEMENT**

FILE NAME: R:\116.854.001 (Superior Town Park)\Dwg\FDP - PARKS ONLY 2ND SUBMITTAL\STCP\_FDP1\_L1-SITE.dwg

CTB FILE:

PLOT DATE: 11/13/2017 3:45 PM

THIS DRAWING IS CURRENT AS OF PLOT DATE AND MAY BE SUBJECT TO CHANGE.

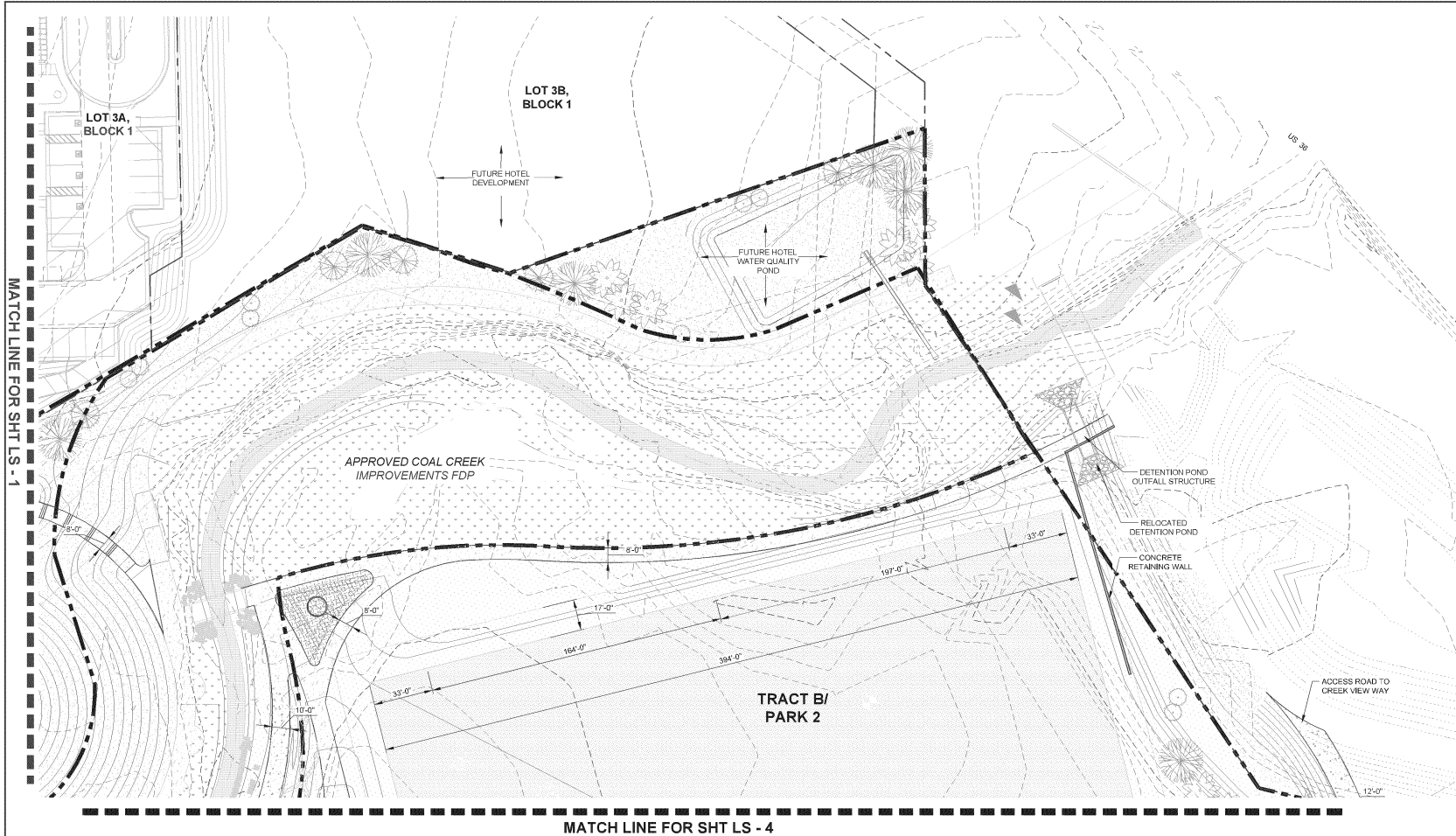


PREPARED BY:

**Matrix**  
DESIGN GROUP  
AN EMPLOYEE-OWNED COMPANY

FOR AND ON BEHALF OF  
MATRIX DESIGN GROUP, INC.  
PROJECT No. 16.854.001

SUPERIOR TOWN CENTER FDP 1, PHASE 6 FOR PARKS 1 & 2				
TOWN OF SUPERIOR COLORADO				
SITE PLAN (SOUTHWEST)				
DESIGNED BY:	IA	SCALE:	DATE ISSUED:	DRAWING No.:
DRAWN BY:	CVJ	1"=30'	2017.08.18	LS-2
CHECKED BY:	IA	VERT	SHEET	
			4 OF 20	



**SYMBOL KEY**

- FOP LIMIT LINE
- CONCRETE - PAVEMENT 1
- SPECIALTY PAVERS - PAVEMENT 2
- ASPHALT - PAVEMENT 3
- KIDS PLAY AREA

**SYMBOL KEY- SEED AND LANDSCAPE AREAS**

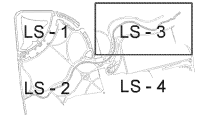
- NATIVE MIDGRASS MIX
- TURF GRASS SEED MIX
- TURF GRASS SOID
- ORNAMENTAL PLANTING BED

**PARKING TABLE**

PARKING (OFF-STREET):	(0) STANDARD
	(0) ADA
PARKING (ON-STREET):	(0) STANDARD
	(0) ADA

\* PUBLIC ART WILL BE INCORPORATED TO BOTH PARKS 1 & 2 AS APPROVED BY THE TOWN.

**KEYMAP:**



REFERENCE DRAWINGS	No.	DATE	DESCRIPTION	BY
1	2017.06.13	FDP SUBMITTAL #1		JA
2	2017.07.28	FDP SUBMITTAL #2		JA
3	2017.08.19	FDP SUBMITTAL #3		JA

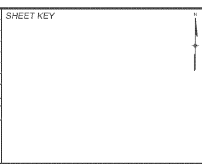
  

No.	DATE	DESCRIPTION	BY
		REVISIONS	

**COMPUTER FILE MANAGEMENT**

FILE NAME: R:\116.854.001 (Superior Town Park)\Dwg\FDP - PARKS ONLY 2ND SUBMITTAL\STCP\_FDP1\_L1-SITE.dwg  
 C718 FILE: ---  
 PLOT DATE: 11/13/2017 3:45 PM  
 THIS DRAWING IS CURRENT AS OF PLOT DATE AND MAY BE SUBJECT TO CHANGE.



PREPARED BY:

FOR AND ON BEHALF OF  
 MATRIX DESIGN GROUP, INC.  
 PROJECT No. 16.854.001

DESIGNED BY: \_\_\_\_\_  
 DRAWN BY: \_\_\_\_\_  
 CHECKED BY: \_\_\_\_\_

SCALE: 1"=30'  
 SHEET: 5 OF 20

DATE ISSUED: 2017.08.18

DRAWING No. **LS-3**

**SUPERIOR TOWN CENTER FDP 1,  
 PHASE 6 FOR PARKS 1 & 2**

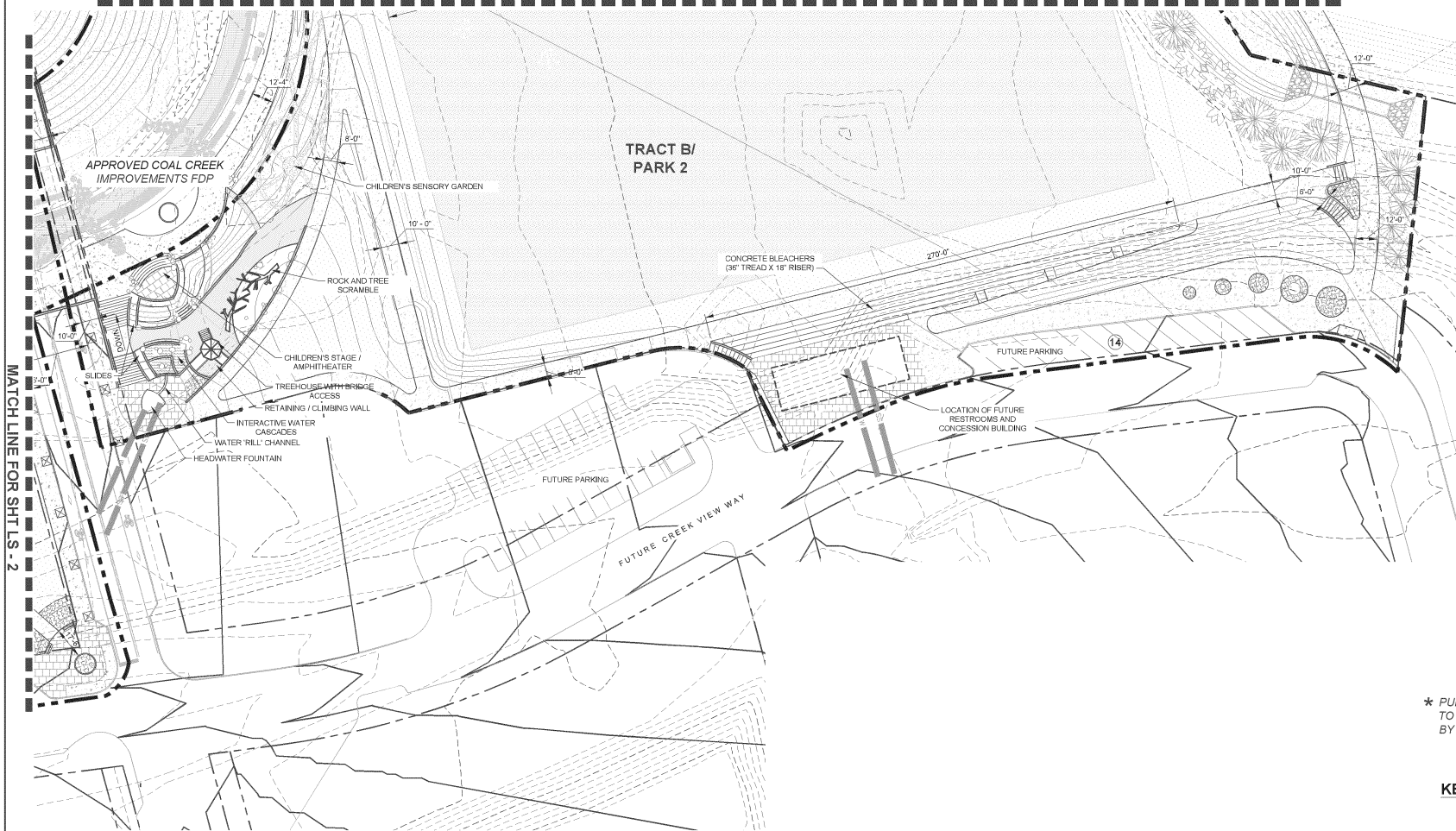
TOWN OF SUPERIOR  
 COLORADO

**SITE PLAN (NORTHEAST)**



Know what's below.  
Call before you dig.

MATCH LINE FOR SHT LS - 3



**SYMBOL KEY**

- FDP LIMIT LINE
- CONCRETE - PAVEMENT 1
- SPECIALTY PAVERS - PAVEMENT 2
- ASPHALT - PAVEMENT 3
- KIDS PLAY AREA

**SYMBOL KEY - SEED AND LANDSCAPE AREAS**

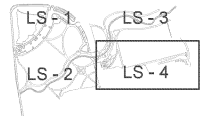
- NATIVE MIDGRASS MIX
- TURF GRASS SEED MIX
- TURF GRASS SOG
- ORNAMENTAL PLANTING BED

**PARKING TABLE**

PARKING (OFF-STREET)	(0) STANDARD
	(0) ADA
PARKING (ON-STREET)	(13) STANDARD
	(1) ADA

\* PUBLIC ART WILL BE INCORPORATED TO BOTH PARKS 1 & 2 AS APPROVED BY THE TOWN.

KEYMAP:



REFERENCE DRAWINGS	No.	DATE	DESCRIPTION	BY
1	2017.06.13	FDP SUBMITTAL #1		JA
2	2017.07.28	FDP SUBMITTAL #2		JA
3	2017.08.18	FDP SUBMITTAL #3		JA

No.	DATE	DESCRIPTION	BY

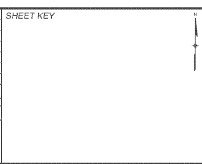
**COMPUTER FILE MANAGEMENT**

FILE NAME: R:\116.854.001 (Superior Town Park)\Dwg\FDP - PARKS ONLY 2ND SUBMITTAL\STCP\_FDP1\_L1-SITE.dwg

CTB FILE: R:\116.854.001 (Superior Town Park)\Dwg\FDP - PARKS ONLY 2ND SUBMITTAL\STCP\_FDP1\_L1-SITE.ctb

PLOT DATE: 11/13/2017 3:46 PM

THIS DRAWING IS CURRENT AS OF PLOT DATE AND MAY BE SUBJECT TO CHANGE.



PREPARED BY:

**Matrix**  
DESIGN GROUP  
AN EMPLOYEE-OWNED COMPANY

FOR AND ON BEHALF OF  
MATRIX DESIGN GROUP, INC.  
PROJECT No. 16.854.001

SEAL

**SUPERIOR TOWN CENTER FDP 1,  
PHASE 6 FOR PARKS 1 & 2**

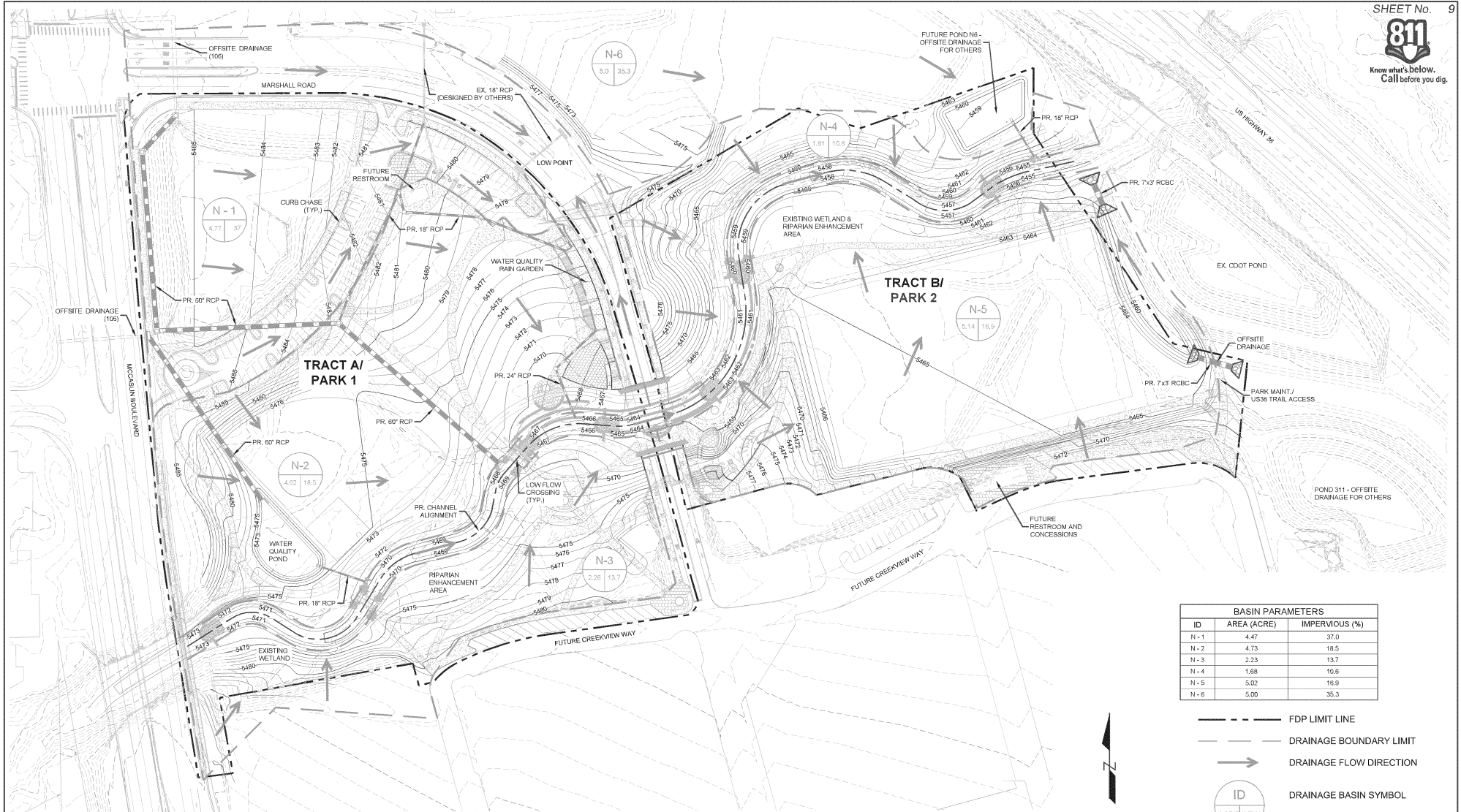
TOWN OF SUPERIOR  
COLORADO

**SITE PLAN (SOUTHEAST)**

DESIGNED BY	IA	SCALE	DATE ISSUED:	2017.08.18	DRAWING No.
DRAWN BY	CV	1"=30'	SHEET	6 OF 20	LS-4
CHECKED BY	IA	VERT			

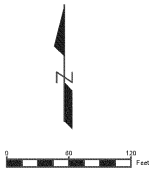


Know what's below.  
Call before you dig.



BASIN PARAMETERS		
ID	AREA (ACRE)	IMPERVIOUS (%)
N-1	4.47	37.0
N-2	4.73	18.5
N-3	2.23	13.7
N-4	1.68	16.9
N-5	5.02	16.9
N-6	5.00	35.3

- FDP LIMIT LINE
- DRAINAGE BOUNDARY LIMIT
- DRAINAGE FLOW DIRECTION
- DRAINAGE BASIN SYMBOL



NO.	DATE	DESCRIPTION	BY
REVISIONS			

REFERENCE DRAWINGS	NO.	DATE	DESCRIPTION
FDP SUBMITTAL #1	1	2017.06.13	
FDP SUBMITTAL #2	2	2017.07.26	
FDP SUBMITTAL #3	3	2017.08.19	

FILE NAME:	COMPUTER FILE MANAGEMENT
R:\116.854.001 (Superior Town Park)\Day\FDP - PARKS ONLY 2ND SUBMITTAL\STCP_FDP1_C100-DRAINAGE PLAN.dwg	
C178 FILE:	
PRINT DATE: 10/10/2017 10:54 AM	
THIS DRAWING IS CURRENT AS OF PLOT DATE AND MAY BE SUBJECT TO CHANGE	

SHEET KEY

PREPARED BY:

FOR AND ON BEHALF OF:  
MATRIX DESIGN GROUP, INC.  
PROJECT No. 16.854.001

SEAL

**SUPERIOR TOWN CENTER FDP 1,  
PHASE 6 FOR PARKS 1 & 2**

TOWN OF SUPERIOR  
COLORADO

**DRAINAGE PLAN**

DESIGNED BY:	SUS	SCALE:	DATE ISSUED:	2017.08.18	DRAWINGS No.:
DRAWN BY:	GMM	FOR:	1"=60'	7 OF 20	C-1
CHECKED BY:	SUS	VERT:	N/A	SHEET	





Know what's below.  
Call before you dig.



REFERENCE DRAWINGS	NO.	DATE	DESCRIPTION	BY
	1	2017.06.13	FDP SUBMITTAL #1	
	2	2017.07.26	FDP SUBMITTAL #2	
	3	2017.08.19	FDP SUBMITTAL #3	

NO.	DATE	DESCRIPTION	BY

COMPUTER FILE MANAGEMENT	
FILE NAME:	R:\116.854.001 (Superior Town Park)\Day\FDP - PARKS ONLY 2ND SUBMITTAL\STCP_FDP1_C100-SITE UTILITY PLAN.dwg
CTB FILE:	
PRINT DATE:	10/6/2017 11:24 AM
THIS DRAWING IS CURRENT AS OF PRINT DATE AND MAY BE SUBJECT TO CHANGE	

DATE	BY	DESCRIPTION

**LEGEND**

- SS - PROPOSED STORM
- SS - PROPOSED SANITARY
- W - PROPOSED WATER
- RW - PROPOSED REUSE WATER
- FW - PROPOSED FUTURE CROSSING
- SS - EXISTING STORM
- SS - EXISTING SANITARY
- W - EXISTING WATER
- RW - EXISTING REUSE WATER
- FDP LIMITS

- STORM MANHOLE
- SANITARY MANHOLE
- TYPE-14 INLET
- ▭ FLARED END SECTION (FES)

PREPARED BY:

FOR AND ON BEHALF OF  
MATRIX DESIGN GROUP, INC.  
PROJECT No. 16.854.001

**SUPERIOR TOWN CENTER FDP 1,  
PHASE 6 FOR PARKS 1 & 2**

TOWN OF SUPERIOR  
COLORADO

**UTILITY PLAN**

DESIGNED BY: SDS  
DRAWN BY: GMM  
CHECKED BY: SDS

SCALE: 1"=50'  
VERT: N/A

DATE ISSUED: 2017.08.18  
SHEET: 8 OF 23

DRAWING No.: 9  
C-2

**SYMBOL KEY- DECIDUOUS TREES - PARK LANDSCAPE**

	◀ <b>Acer ginnalo</b> 'Flame' (AGF) - Flame Amur Maple	
	<b>Acer grandidentatum</b> (AGR) - Bigtooth Maple ▶	
	◀ <b>Acer rubrum</b> 'Red Sunset' (ARS) - Red Sunset Maple	
	<b>Acer saccharum</b> 'Green Mountain' (AGM) - Green Mountain Sugar Maple ▶	
	◀ <b>Aesculus x carnea</b> (AXC) - Red Horsechestnut	
	<b>Alnus tenuifolia</b> (ATE) - Native Thin-Leaf Alder ▶	
	◀ <b>Amelanchier alnifolia</b> (AAL) - Saskatoon Serviceberry	
	<b>Catalpa speciosa</b> (CSP) - Western Catalpa ▶	
	◀ <b>Celtis occidentalis</b> (COC) - Common Hackberry	
	<b>Cladrestis kentukea</b> (CKU) - American Yellowwood ▶	
	◀ <b>Fraxinus americana</b> 'Autumn Purple' (FAP) - Autumn Purple Ash	
	<b>Ginkgo biloba</b> 'Princeton Sentry' (GPS) - Princeton Sentry Ginkgo ▶	
	◀ <b>Gleditsia triacanthos inermis</b> 'Imperial' (GIT) - Imperial Honeylocust	
	<b>Gleditsia triacanthos inermis</b> 'Skyline' (GTS) - Skyline Honeylocust ▶	
	◀ <b>Gymnocladus dioica</b> (GDI) - Kentucky Coffeetree	
	<b>Platanus x acerifolia</b> 'Exclamation!' (PAE) - Exclamation! Planetree ▶	
	◀ <b>Populus x acuminata</b> (PAC) - Lanceleaf Cottonwood	
	<b>Quercus alba</b> (GAL) - White Oak ▶	
	◀ <b>Quercus bicolor</b> (QBI) - Swamp White Oak	
	<b>Quercus macrocarpa</b> (QMA) - Bur Oak ▶	
	◀ <b>Quercus robur</b> (QRO) - English Oak	
	<b>Quercus rubra</b> (QRU) - Northern Red Oak ▶	
	◀ <b>Syringa reticulata</b> 'Ivory Silk' (SRI) - Ivory Silk Japanese Lilac	
	<b>Tilia americana</b> (TAM) - American Linden ▶	
	◀ <b>Tilia cordata</b> 'Greenspire' (TCG) - Greenspire Linden	
	<b>Ulmus Accolade</b> (UAC) - Accolade Elm ▶	
	◀ <b>Ulmus davidiana japonica</b> 'Discovery' (UDJ) - Discovery Elm	

**SYMBOL KEY- EVERGREEN TREES - PARK LANDSCAPE**

	◀ <b>Picea glauca</b> 'Densata' (PGD) - Black Hills Spruce	
	<b>Pinus heldreichii</b> (PHE) - Bosnian Pine ▶	
	◀ <b>Pinus nigra</b> (PNI) - Austrian Pine	
	<b>Picea pungens</b> (PPU) - Colorado Spruce ▶	

**SYMBOL KEY- SEED AND LANDSCAPE AREAS**

	NATIVE MIDGRASS MIX
	TURF GRASS SEED MIX
	TURF GRASS SOD
	RIPARIAN SEED MIX

★ **LANDSCAPING WITHIN COAL CREEK IMPROVEMENT WAS APPROVED THROUGH PREVIOUS REVIEW**

**CONCEPTUAL PLANTING SCHEDULE SUPERIOR TOWN PARK - PARK LANDSCAPE**

DECIDUOUS TREES		Quantity	Abbr.	Genus	Species	Common Name	Min. Size	Spacing	Notes
20	AGF	Acer	ginnalo	'Flame'	Flame Amur Maple	6 ft clump	as shown	B&B	
8	AGR	Acer	grandidentatum		Bigtooth Maple	2-3' ht	as shown	FAC	
11	ARS	Acer	rubrum	'Red Sunset'	Red Sunset Maple	2.5' cal.	as shown	B&B	
9	AGM	Acer	saccharum	'Green Mountain'	Green Mountain Sugar Maple	2.5' cal.	as shown	B&B	
11	AXC	Aesculus	x carnea		Red Horsechestnut	2.5' cal.	as shown	B&B	
9	ATE	Alnus	incana	tenuifolia	Native Thin-Leaf Alder	2-3' ht	as shown	FAW	
11	AAL	Amelanchier	alnifolia		Saskatoon Serviceberry	2-3' ht	as shown	FACU	
15	CSP	Catalpa	speciosa		Western Catalpa	2' cal.	as shown	FACU	
10	COC	Celtis	occidentalis		Common Hackberry	2' cal	as shown	FACU	
14	CKU	Cladrestis	kentukea		American Yellowwood	3' cal.	as shown	B&B	
10	FAP	Fraxinus	americana	'Autumn Purple'	Autumn Purple Ash	2.5' cal.	as shown	B&B	
9	GPS	Ginkgo	biloba	'Princeton Sentry'	Princeton Sentry Ginkgo	2' cal.	as shown	B&B	Seedless, male clone
7	GIT	Gleditsia	triacanthos	inermis 'Imperial'	Imperial Honeylocust	3' cal.	as shown	B&B	
24	GTS	Gleditsia	triacanthos	inermis 'Skyline'	Skyline Honeylocust	3' cal.	as shown	B&B	
25	GDI	Gymnocladus	dioica		Kentucky Coffeetree	2' cal.	as shown	Native US, not CO	
9	PAE	Platanus	x acerifolia	'Exclamation'	Exclamation! Planetree	2' cal.	as shown	B&B	
10	PAC	Populus	x acuminata		Lanceleaf Cottonwood	2' cal.	as shown	FAC	
4	GAL	Quercus	alba		White Oak	3' cal.	as shown	B&B	
9	QBI	Quercus	bicolor		Swamp White Oak	2' cal.	as shown	Native US, not CO	
3	QMA	Quercus	macrocarpa		Bur Oak	2' cal.	as shown	Native US, not CO	
4	QRO	Quercus	robur		English Oak	3' cal.	as shown	B&B	
13	QRU	Quercus	rubra		Northern Red Oak	3' cal.	as shown	B&B	
17	SRI	Syringa	reticulata	'Ivory Silk'	Ivory Silk Japanese Lilac	6 ft clump	as shown	B&B	
17	TAM	Tilia	americana		American Linden	3' cal.	as shown	B&B	
21	TCG	Tilia	cordata	'Greenspire'	Greenspire Linden	3' cal.	as shown	B&B	
10	UAC	Ulmus	Accolade		Accolade Elm	2.5' cal.	as shown	B&B	
13	UDJ	Ulmus	davidiana	japonica 'Discovery'	Discovery Elm	2.5' cal.	as shown	B&B	

EVERGREEN TREES		Quantity	Abbr.	Genus	Species	Common Name	Min. Size	Spacing	Notes
12	PGD	Picea	glauca	'Densata'	Black Hills Spruce	6 ft ht.	as shown	B&B	
13	PHE	Pinus	heldreichii		Bosnian Pine	4 ft ht.	as shown	B&B	
11	PNI	Pinus	nigra		Austrian Pine	6 ft ht.	as shown	B&B	
18	PPU	Picea	pungens		Colorado Spruce	6 ft ht.	as shown	B&B	

PERENNIALS, GRASSES AND SHRUBS		Quantity	Abbr.	Genus	Species	Common Name	Min. Size	Spacing	Notes
459	BBA	Bouteloua	gracilis	'Blonde Ambition'	Blonde Ambition Grama	1 gal.	18" O.C.		
2947	BFA	Bouteloua	purpurea	'First Love'	First Love Grama	1 gal.	18" O.C.		
47	JIB	Juniperus	horizontalis	'Icee Blue'	Icee Blue Juniper	5 gal.	5' O.C.		
178	JSA	Juniperus	sabina	'Arcadia'	Arcadia Juniper	5 gal.	3' O.C.		
37	LVC	Ligustrum	vulgare	'Lodense'	Lodense Privet	5 gal.	3' O.C.		
117	MYJ	Miscanthus	sinensis	'Yaku Jima'	Yaku Jima Maiden Grass	5 gal.	3' O.C.		
224	PVN	Panicum	virgatum	'Northwind'	Northwind Switchgrass	1 gal.	12" O.C.		
104	RKO	Rosa	x knock out		Knock Out Rose	5 gal.	30" O.C.		
847	SSB	Schizachyrium	scoparium	'Blaze'	Blaze Little Bluestem	5 gal.	24" O.C.		
25	SIS	Sorghastrum	nutans	'Indian Steel'	Indian Steel Indian Grass	5 gal.	24" O.C.		
102	SNF	Spirea	japonica	'Neon Flash'	Neon Flash Spirea	5 gal.	3' O.C.		
52	TOE	Thuja	occidentalis	'Emerald'	Emerald Arborvitae	15 gal.	3' O.C.		
7	VLE	Viburnum	dentatum		Arrowwood Viburnum	5 gal.	6' O.C.		
112	WFR	Weigela	florida	'Rumba'	Rumba Weigela	5 gal.	3' O.C.		

**SYMBOL KEY- ORNAMENTAL PERENNIALS, GRASSES and SHRUBS for PARK LANDSCAPE**

	<b>Bouteloua gracilis</b> 'Blonde Ambition' (BBA) - Blonde Ambition Grama		<b>Rosa x 'Knock Out'</b> (RKO) - Knock Out Rose
	<b>Dianthus 'First Love'</b> (DFL) - First Love Dianthus		<b>Schizachyrium scoparium</b> 'Blaze' (SSB) - Blaze Little Bluestem Grass
	<b>Echinacea purpurea</b> 'Fragrant Angel' (EFA) - White Coneflower		<b>Sorghastrum nutans</b> 'Indian Steel' (SIS) - Indian Steel Indian Grass
	<b>Juniperus horizontalis</b> 'Icee Blue' (JIB) - Icee Blue Juniper		<b>Spirea japonica</b> 'Neon Flash' (SNF) - Neon Flash Spirea
	<b>Juniperus sabina</b> 'Arcadia' (JSA) - Arcadia Juniper		<b>Thuja occidentalis</b> 'Emerald' (TOE) - Emerald Arborvitae
	<b>Ligustrum vulgare</b> 'Lodense' (LVL) - Lodense Privet		<b>Viburnum dentatum</b> (VDE) - Arrowwood Viburnum
	<b>Miscanthus sinensis</b> 'Yaku Jima' (MYJ) - Yaku Jima Maiden Grass		<b>Weigela florida</b> 'Rumba' (WFR) - Rumba Weigela
	<b>Panicum virgatum</b> 'Northwind' (PVN) - Northwind Switchgrass		

REFERENCE DRAWINGS	1	2017.06.13	FDP SUBMITTAL #1		
	2	2017.07.28	FDP SUBMITTAL #2		
	3	2017.08.19	FDP SUBMITTAL #3		
REVISIONS	NO.	DATE	DESCRIPTION	BY	
COMPUTER FILE MANAGEMENT					
FILE NAME: R:\116.854.001 (Superior Town Park)\Dwg\FDP - PARKS ONLY 2ND SUBMITTAL\STCP_FDP1_L1-LANDSCAPE.dwg					
C7R FILE					
PLOT DATE: 10/22/2017 10:55 AM					
THIS DRAWING IS CURRENT AS OF PLOT DATE AND MAY BE SUBJECT TO CHANGE.					

SEAL

PREPARED BY:

FOR AND ON BEHALF OF MATRIX DESIGN GROUP, INC. PROJECT No. 16.854.001

**SUPERIOR TOWN CENTER FDP 1, PHASE 6 FOR PARKS 1 & 2**

TOWN OF SUPERIOR COLORADO

**LANDSCAPE SCHEDULES AND LEGENDS**

DESIGNED BY: [Signature] SCALE: DATE ISSUED: 2017.08.18 DRAWING No. LS-5

CHECKED BY: [Signature] SCALE: 1"=30' SHEET 9 OF 20



**SYMBOL KEY - SEED AND LANDSCAPE AREAS**

- NATIVE MIDGRASS MIX
- TURF GRASS SEED MIX
- TURF GRASS SOD
- RIPARIAN SEED MIX
- CONCRETE - PAVEMENT 1
- SPECIALTY PAVERS - PAVEMENT 2
- ASPHALT - PAVEMENT 3
- KIDS PLAY AREA

**SYMBOL KEY - DECIDUOUS TREES**

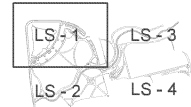
- Acer glabrum (AGL) - Plane Tree Maple
- Acer grandidentatum (GDR) - English Maple
- Acer rubrum (AR) - Red Sweetgum
- Acer saccharum (AS) - Green Mountain Sugar Maple
- Aesculus (ASC) - Red Horsechestnut
- Alnus incana (AI) - White Thicket Alder
- Asterilobus (AM) - Sablewood Sycamore
- Cedrus (CD) - Western Cedar
- Celtis occidentalis (CO) - Common Hackberry
- Cornus (CO) - American Yellowwood
- Fraxinus americana (FA) - White Ash
- Gleditsia triacanthos (GT) - Honey Suckle
- Liquidambar styraciflua (LS) - Sweetgum
- Quercus (QU) - American White Oak
- Quercus macrocarpa (QM) - Bur Oak
- Quercus (QU) - White Oak
- Quercus (QU) - Swamp White Oak
- Quercus (QU) - Bur Oak
- Quercus (QU) - English Oak
- Quercus (QU) - Another Red Oak
- Syringa (SY) - Very Small Japanese Lilac
- Tilia (TI) - American Linden
- Ulmus (UL) - American Elm
- Ulmus (UL) - Discovery Elm

**SYMBOL KEY - EVERGREEN TREES**

- Picea canadensis (PC) - Black Hills Spruce
- Picea (PI) - Spruce Pine
- Pinus strobus (PS) - White Pine
- Pinus (PI) - Colorado Spruce

\* LANDSCAPING WITHIN COAL CREEK IMPROVEMENTS WAS APPROVED THROUGH PREVIOUS REVIEW

**KEYMAP:**



REFERENCE DRAWINGS	NO.	DATE	DESCRIPTION	BY
1	2017.06.13	FDP SUBMITTAL #1		
2	2017.07.28	FDP SUBMITTAL #2		
3	2017.08.19	FDP SUBMITTAL #3		

COMPUTER FILE MANAGEMENT
FILE NAME: R:\116.854.001 (Superior Town Park)\Day\FDP - PARKS ONLY 2ND SUBMITTAL\STCOP_FDP1_L1-LANDSCAPE.dwg
CTB FILE:
PLOT DATE: 11/14/2017 2:09 PM

REVISIONS
NO. DATE DESCRIPTION

PREPARED BY:

FOR AND ON BEHALF OF  
 MATRIX DESIGN GROUP, INC.  
 PROJECT No. 16.854.001

DESIGNED BY	DRAWN BY	CHECKED BY	SCALE	DATE ISSUED	DRAWING No.
IA	IA	IA	1"=20'	2017.08.18	LS-6

**SUPERIOR TOWN CENTER FDP 1, PHASE 6 FOR PARKS 1 & 2**

TOWN OF SUPERIOR  
 COLORADO

**LANDSCAPE PLAN (NORTHWEST)**



Know what's below.  
Call before you dig.

MATCH LINE FOR SHT LS - 1

MATCH LINE FOR SHT LS - 4

**SYMBOL KEY - DECIDUOUS TREES**

- ← Acer grandifolium (AGF) - Florida Sweetgum
- ← Acer glabrum (AGL) - Smooth Maple
- ← Acer saccharinum (ASAC) - Red Sweetgum
- ← Acer saccharum (ASAC) - Sugar Maple
- ← Alnus incana (AI) - Red Hiccupnut
- ← Alnus ssp. (AI) - Black Locust
- ← Andromeda (AN) - Sweetgum
- ← Castanea (CA) - Western Chestnut
- ← Carya (CA) - Common Hickory
- ← Quercus (QU) - American Whiteoak
- ← Fraxinus (FR) - Green Fraxinus
- ← Gleditsia (GL) - Honey Locust
- ← Liquidambar (LI) - Sweetgum
- ← Nyctaginia (NY) - Black Locust
- ← Platanus (PL) - Sycamore
- ← Populus (PO) - Lombardy Poplar
- ← Quercus (QU) - White Oak
- ← Quercus (QU) - Swamp White Oak
- ← Quercus (QU) - Bur Oak
- ← Quercus (QU) - English Oak
- ← Quercus (QU) - Northern Red Oak
- ← Syringa (SY) - Japanese Tree Lilac
- ← Tilia (TI) - American Linden
- ← Tilia (TI) - European Linden
- ← Ulmus (UL) - American Elm
- ← Ulmus (UL) - European Elm

**SYMBOL KEY - EVERGREEN TREES**

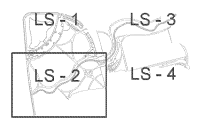
- ← Pinus (PI) - Black Hills Spruce
- ← Pinus (PI) - Scotch Pine
- ← Pinus (PI) - Austrian Pine
- ← Pinus (PI) - Colorado Spruce

\* LANDSCAPING WITHIN COAL CREEK IMPROVEMENT WAS APPROVED THROUGH PREVIOUS REVIEW

**SYMBOL KEY - SEED AND LANDSCAPE AREAS**

- NATIVE MIDGRASS MIX
- TURF GRASS SEED MIX
- TURF GRASS SOD
- RIPARIAN SEED MIX
- CONCRETE - PAVEMENT 1
- SPECIALTY PAVERS - PAVEMENT 2
- ASPHALT - PAVEMENT 3
- KIDS PLAY AREA

**KEYMAP:**



REFERENCE DRAWINGS	NO.	DATE	DESCRIPTION	BY
1	2017.06.13	FDP SUBMITTAL #1		
2	2017.07.28	FDP SUBMITTAL #2		
3	2017.08.19	FDP SUBMITTAL #3		

NO.	DATE	DESCRIPTION	BY

**COMPUTER FILE MANAGEMENT**

FILE NAME: R:116.854.001 (Superior Town Park)\Day\FDP - PARKS ONLY 2ND SUBMITTAL\STCP\_FDP1\_L1-LANDSCAPE.dwg

CTB FILE: R:116.854.001 (Superior Town Park)\Day\FDP - PARKS ONLY 2ND SUBMITTAL\STCP\_FDP1\_L1-LANDSCAPE.ctb

PLOT DATE: 10/22/2017 11:09 AM

THIS DRAWING IS CURRENT AS OF PLOT DATE AND MAY BE SUBJECT TO CHANGE.

PREPARED BY:

FOR AND ON BEHALF OF:

MATRIX DESIGN GROUP, INC.

PROJECT NO. 16.854.001

SEAL

**SUPERIOR TOWN CENTER FDP 1, PHASE 6 FOR PARKS 1 & 2**

TOWN OF SUPERIOR COLORADO

**LANDSCAPE PLAN (SOUTHWEST)**

DESIGNED BY: [Signature] SCALE: 1"=30'

DRAWN BY: [Signature] DATE ISSUED: 2017.08.18

CHECKED BY: [Signature] SHEET: 11 OF 20

DRAWING NO.: LS-7





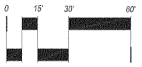




Know what's below.  
Call before you dig.



NORTH



SCALE: 1"=30'

REFER TO SHEET  
 IR-1 IRRIGATION NOTES  
 IR-1 IRRIGATION SCHEDULE  
 IR-2-IR-5 IRRIGATION PLANS

MARSHALL ROAD (124' ROW)

MARSHALL ROAD

FUTURE DEVELOPMENT PAD

MC CASLIN BOULEVARD

MATCHLINE - SEE SHEET IR-3

MATCHLINE - SEE SHEET IR-4

MATCHLINE - SEE SHEET IR-5

CONTRACTOR TO EXTEND 1 1/2" MAINLINE 4 TWO-WIRE COMMUNICATION CABLE TO THIS LOCATION FOR FUTURE CONNECTION TO THE MARSHALL ROAD EXTENSION IRRIGATION SYSTEM. COIL 5' OF COMMUNICATION CABLE IN 10" ROUND VALVE BOX. IF MARSHALL ROAD SYSTEM HAS PREVIOUSLY BEEN INSTALLED, LOCATE AND TIE ONTO EXISTING 1 1/2" IRRIGATION MAINLINE 4 TWO-WIRE COMMUNICATION CABLE IN THIS APPROXIMATE LOCATION. COORDINATE WITH TOWN OF SUPERIOR PARKS DEPARTMENT.

IRRIGATION EQUIPMENT IS SHOWN OUTSIDE LANDSCAPED AREA FOR GRAPHICAL CLARITY ONLY. INSTALL ALL IRRIGATION EQUIPMENT WITHIN LANDSCAPED AREAS.

6" NON-POTABLE LINE TO BE SUPPLIED BY OTHERS

TRACT B / PARK 2

TRACT A / PARK 1

LOCATION OF FUTURE RESTROOMS

HydroSystems-KDI, Inc.

REFERENCE DRAWINGS	NO.	DATE	DESCRIPTION REVISIONS	BY
	1	2017.06.13	FDP SUBMITTAL #1	LJC
	2	2017.07.28	FDP SUBMITTAL #2	LJC
	3	2017.08.18	FDP SUBMITTAL #3	LJC

COMPUTER FILE MANAGEMENT	
FILE NAME:	T:\35900-5899 Jobs\5905-Superior Town Park\5905-SupTownPark - Irrigation - FDP Rev3 - 09-30-2018.dwg
CTB FILE:	
PLOT DATE:	10/5/2016 11:15 AM
THIS DRAWING IS CURRENT AS OF PLOT DATE AND MAY BE SUBJECT TO CHANGE	

NO.	DATE	DESCRIPTION REVISIONS	BY

PREPARED BY:  
  
 AN EMPLOYEE OWNED COMPANY

FOR AND ON BEHALF OF  
 MATRIX DESIGN GROUP, INC.  
 PROJECT NO. 16.854.001

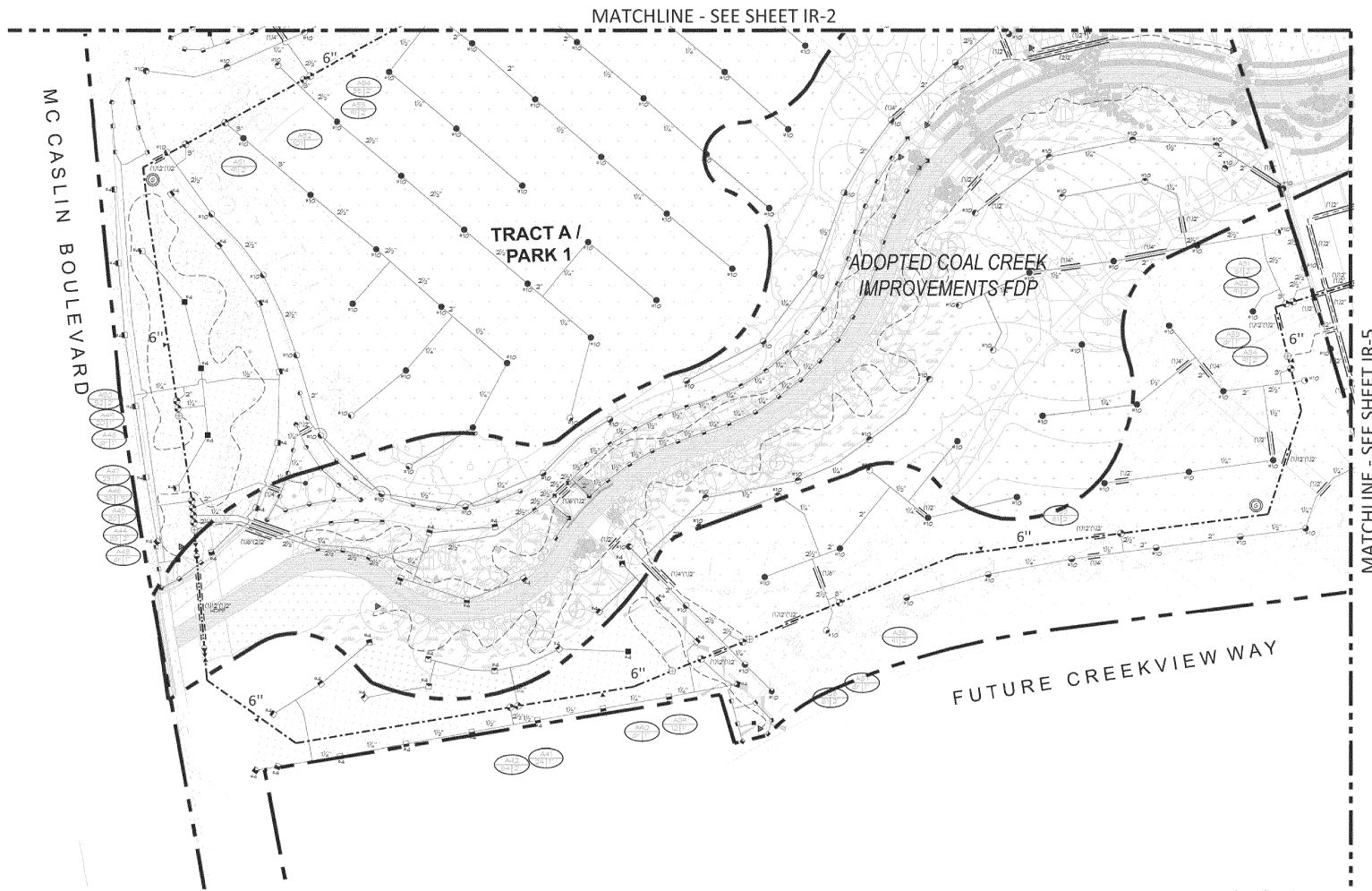
DESIGNED BY:	DRAWN BY:	CHECKED BY:	KJD	LJC	FORZ	SCALE	DATE ISSUED:	DRAWING NO.
							2017.08.18	IR-2
							18 OF 23	

SUPERIOR TOWN CENTER FDP 1,  
 PHASE 6 FOR PARKS 1 & 2  
 TOWN OF SUPERIOR  
 COLORADO  
 IRRIGATION PLAN (NORTHWEST)

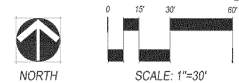




Know what's below.  
Call before you dig.



REFER TO SHEET  
 IR-1 IRRIGATION NOTES  
 IR-1 IRRIGATION SCHEDULE  
 IR-2-IR-5 IRRIGATION PLANS



HydroSystems-KDI, Inc. Irrigation Consulting  
 868 Taylor Street, Suite 300  
 Lakewood, Colorado 80403  
 303.986.5337  
 303.986.5384 (fax)

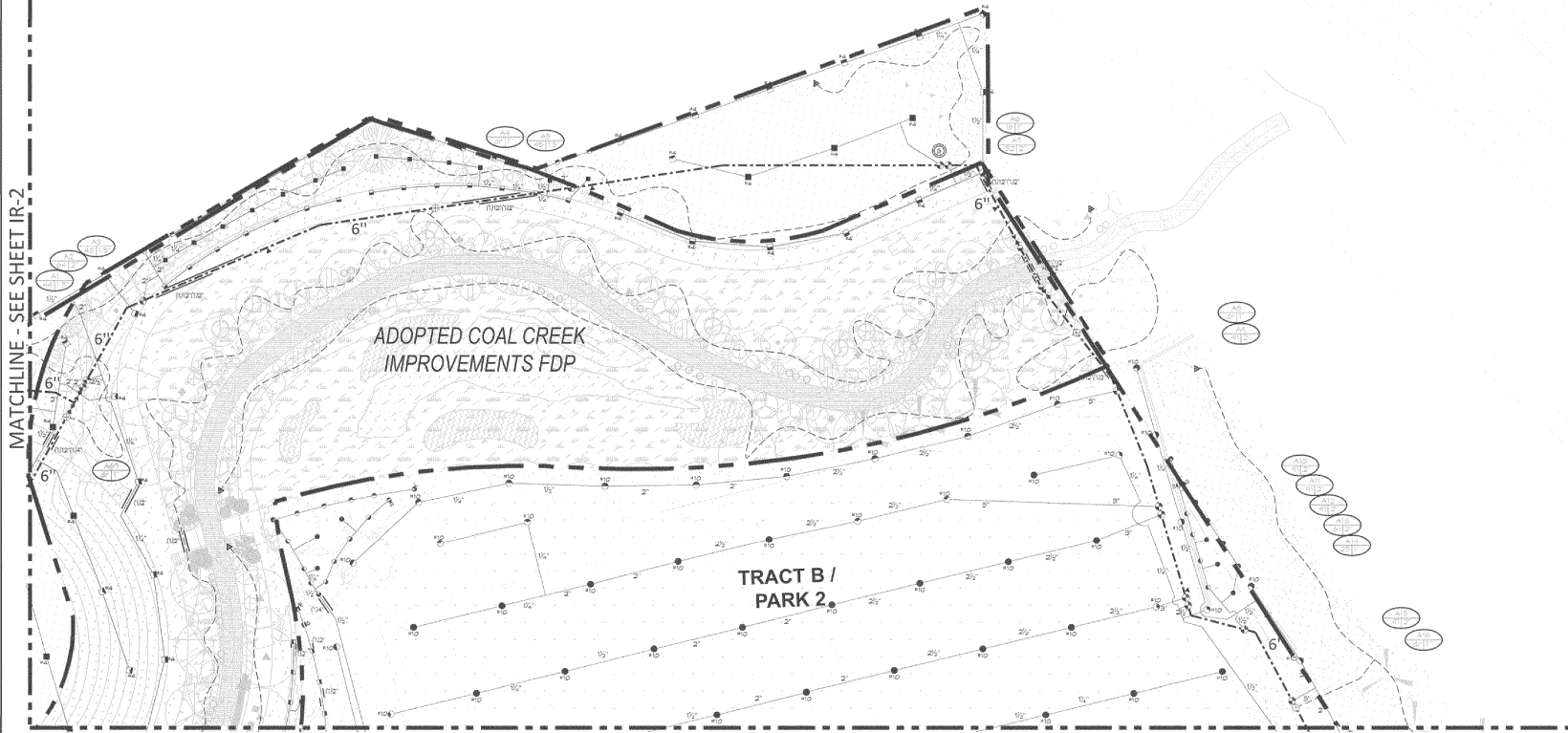
REFERENCE DRAWINGS	NO.	DATE	DESCRIPTION	BY	SHEET KEY
	1	2017.06.13	FDP SUBMITTAL #1	UC	
	2	2017.07.28	FDP SUBMITTAL #2	UC	
	3	2017.08.18	FDP SUBMITTAL #3	UC	
2000001 MASTER/PLAN 2000002 SDC/PROP 2000003 P&S/CONTOUR 2000004 P&S/PLAN 2000005 P&S/LANDSCAPE CHANNEL 2000006 P&S/LANDSCAPE PARK					
No. DATE DESCRIPTION REVISIONS BY					
COMPUTER FILE MANAGEMENT FILE NAME: T:\55900-5999 Jobs\55905-SupTownPark - Irrigation - FDP Rev3 - 09-30-2016.dwg CTB FILE: --- PLOT DATE: 10/5/2016 11:15 AM THIS DRAWING IS CURRENT AS OF PLOT DATE AND MAY BE SUBJECT TO CHANGE					

PREPARED BY:  AN EMPLOYEE-OWNED COMPANY	SEAL
---	------

SUPERIOR TOWN CENTER FDP 1, PHASE 6 FOR PARKS 1 & 2 TOWN OF SUPERIOR COLORADO IRRIGATION PLAN (SOUTHWEST)				
FOR AND ON BEHALF OF MATRIX DESIGN GROUP, INC. PROJECT No. 16.854.001	DESIGNED BY: KJD CHECKED BY: KJD	SCALE: HORIZ. N/A VERT. N/A	DATE ISSUED: 2017.08.18 SHEET 16 OF 29	DRAWING No. IR-3

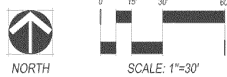


Know what's below.  
Call before you dig.



MATCHLINE - SEE SHEET IR-2

MATCHLINE - SEE SHEET IR-5



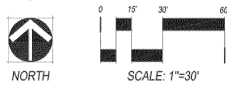
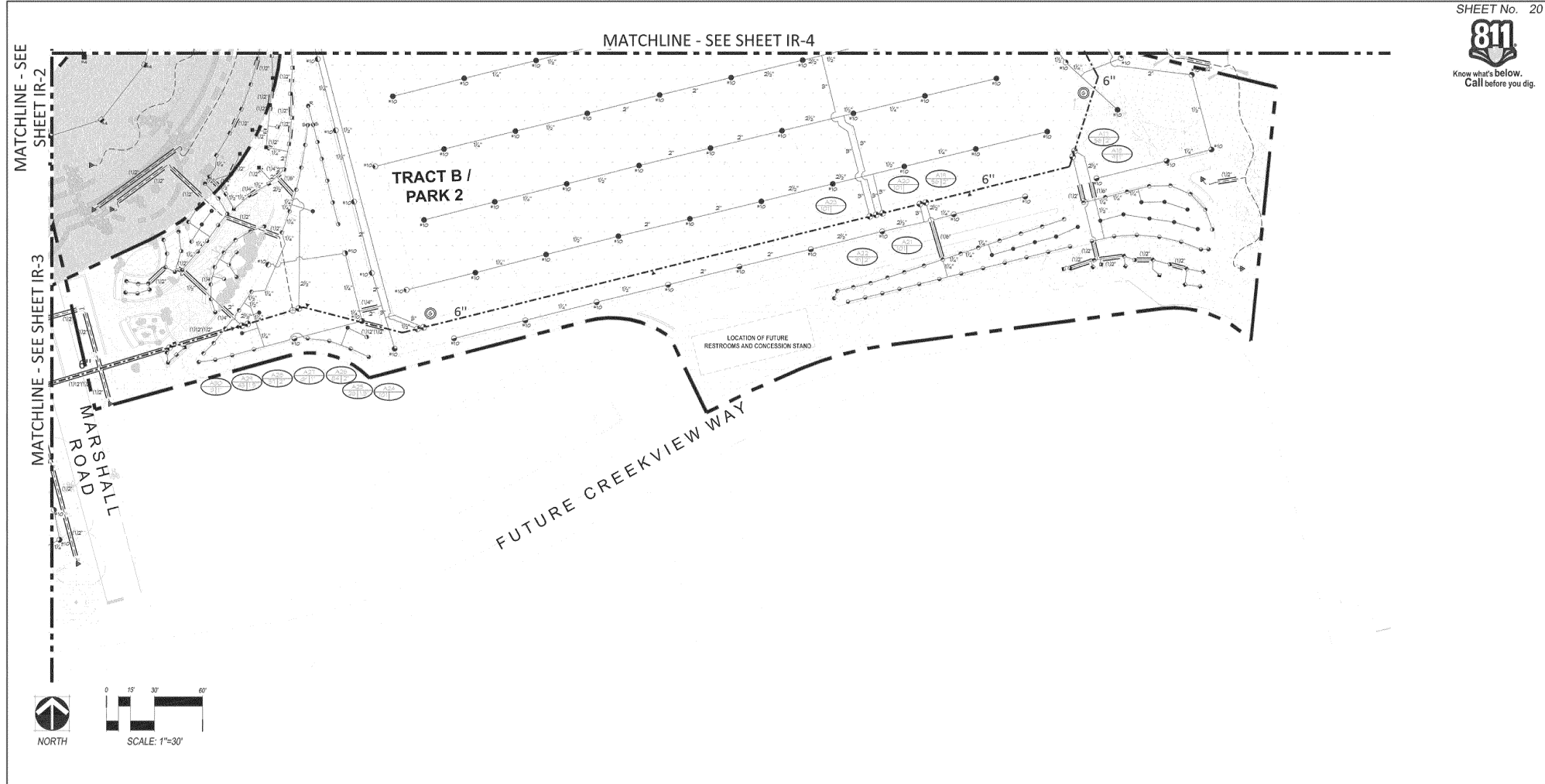
- REFER TO SHEET**
- IR-1 IRRIGATION NOTES
  - IR-1 IRRIGATION SCHEDULE
  - IR-2-IR-5 IRRIGATION PLANS

HydroSystems-KDI, Inc. Irrigation Consulting  
 888 Fisher Street, Suite 200  
 Lakewood, Colorado 80401  
 303.986.5227  
 303.986.5384 (fax)

<p><b>REFERENCE DRAWINGS</b></p> <table border="1" style="width: 100%; border-collapse: collapse;"> <tr> <td style="width: 5%;">1</td> <td style="width: 15%;">2017.06.13</td> <td style="width: 45%;">FDP SUBMITTAL #1</td> <td style="width: 35%;">LIC</td> </tr> <tr> <td>2</td> <td>2017.07.28</td> <td>FDP SUBMITTAL #2</td> <td>LIC</td> </tr> <tr> <td>3</td> <td>2017.08.18</td> <td>FDP SUBMITTAL #3</td> <td>LIC</td> </tr> </table>	1	2017.06.13	FDP SUBMITTAL #1	LIC	2	2017.07.28	FDP SUBMITTAL #2	LIC	3	2017.08.18	FDP SUBMITTAL #3	LIC	<p><b>SHEET KEY</b></p> <table border="1" style="width: 100%; border-collapse: collapse;"> <tr> <td style="width: 5%;">No.</td> <td style="width: 15%;">DATE</td> <td style="width: 45%;">DESCRIPTION</td> <td style="width: 35%;">BY</td> </tr> <tr> <td colspan="4" style="text-align: center;">REVISIONS</td> </tr> </table>	No.	DATE	DESCRIPTION	BY	REVISIONS				<p><b>COMPUTER FILE MANAGEMENT</b></p> <p>FILE NAME: T:\35900-5899 Jobs\5800-Superior Town Park\5800-SupTownPark - Irrigation - FDP Rev3 - 09-30-2016.dwg          CTR FILE: ---          PLOT DATE: 10/5/2016 11:15 AM          THIS DRAWING IS CURRENT AS OF PLOT DATE AND MAY BE SUBJECT TO CHANGE</p>	<p>FOR AND ON BEHALF OF  <b>MATRIX DESIGN GROUP</b>          AN EMPLOYEE-OWNED COMPANY</p>	<p>FOR AND ON BEHALF OF  <b>MATRIX DESIGN GROUP, INC.</b>          PROJECT No. 16.854.001</p>	<table border="1" style="width: 100%; border-collapse: collapse;"> <tr> <td>DESIGNED BY:</td> <td>KJD</td> <td>SCALE:</td> <td>DATE ISSUED:</td> <td>2017.08.18</td> <td>DRAWING No.:</td> </tr> <tr> <td>DRAWN BY:</td> <td>LJC</td> <td>HORIZ:</td> <td>N/A</td> <td></td> <td>IR-4</td> </tr> <tr> <td>CHECKED BY:</td> <td>KJD</td> <td>VERT:</td> <td>N/A</td> <td></td> <td></td> </tr> <tr> <td></td> <td></td> <td></td> <td>SHEET</td> <td>17 OF 29</td> <td></td> </tr> </table>	DESIGNED BY:	KJD	SCALE:	DATE ISSUED:	2017.08.18	DRAWING No.:	DRAWN BY:	LJC	HORIZ:	N/A		IR-4	CHECKED BY:	KJD	VERT:	N/A						SHEET	17 OF 29		<p style="text-align: center;"><b>SUPERIOR TOWN CENTER FDP 1,          PHASE 6 FOR PARKS 1 &amp; 2</b></p> <p style="text-align: center;">TOWN OF SUPERIOR          COLORADO</p> <p style="text-align: center;"><b>IRRIGATION PLAN (NORTHEAST)</b></p>
1	2017.06.13	FDP SUBMITTAL #1	LIC																																															
2	2017.07.28	FDP SUBMITTAL #2	LIC																																															
3	2017.08.18	FDP SUBMITTAL #3	LIC																																															
No.	DATE	DESCRIPTION	BY																																															
REVISIONS																																																		
DESIGNED BY:	KJD	SCALE:	DATE ISSUED:	2017.08.18	DRAWING No.:																																													
DRAWN BY:	LJC	HORIZ:	N/A		IR-4																																													
CHECKED BY:	KJD	VERT:	N/A																																															
			SHEET	17 OF 29																																														



Know what's below.  
Call before you dig.



REFER TO SHEET  
 IR-1 IRRIGATION NOTES  
 IR-1 IRRIGATION SCHEDULE  
 IR-2-IR-5 IRRIGATION PLANS

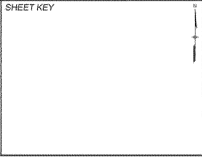
HydroSystems-KDI, Inc. Irrigation Consulting  
 888 Fisher Street, Suite 300  
 Lakewood, Colorado 80401  
 303-980-5357  
 303-980-5384 (fax)

REFERENCE DRAWINGS	NO.	DATE	DESCRIPTION	BY
	1	2017.06.13	FDP SUBMITTAL #1	LJC
	2	2017.07.28	FDP SUBMITTAL #2	LJC
	3	2017.08.18	FDP SUBMITTAL #3	LJC

No.	DATE	DESCRIPTION	BY

COMPUTER FILE MANAGEMENT  
 FILE NAME: T:15900-5999 Jobs\15900-Superior Town Park\15905-SupTownPark - Irrigation - FDP Rev3 - 09-30-2016.dwg  
 CTB FILE: ---  
 PLOT DATE: 10/3/2016 11:16 AM  
 THIS DRAWING IS CURRENT AS OF PLOT DATE AND MAY BE SUBJECT TO CHANGE



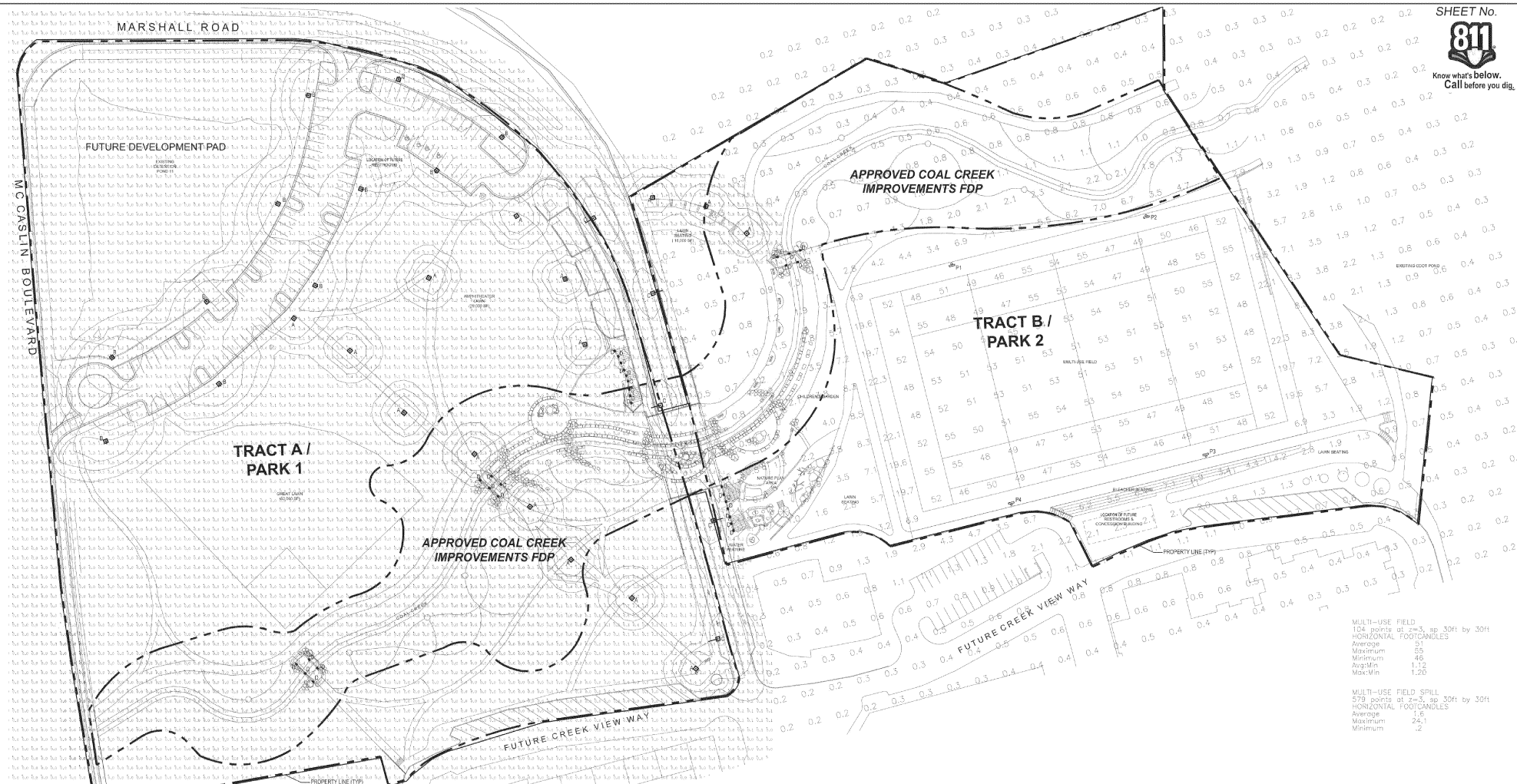
PREPARED BY:  
**Matrix** DESIGN GROUP  
 AN EMPLOYEE-OWNED COMPANY

SEAL  
 FOR AND ON BEHALF OF  
 MATRIX DESIGN GROUP, INC.  
 PROJECT No. 16.854.001

SUPERIOR TOWN CENTER FDP 1, PHASE 6 FOR PARKS 1 & 2					
TOWN OF SUPERIOR COLORADO					
IRRIGATION PLAN (SOUTHEAST)					
DESIGNED BY:	KJD	SCALE:	DATE ISSUED:	2017.08.18	DRAWING No.
DRWN BY:	LJC	1/8" = 1' - 0"	21	OF 23	IR-5
CHECKED BY:	KJD	VERT.	SHEET		



Know what's below. Call before you dig.



Calculation Summary							
Footcandle	Footcandle	Units	Avg	Max	Min	Foot/Min	Foot/Min
Bridge Lighting	111	luminaire	1,100	2.8	0.2	5,000	14,000
General Illumination	111	luminaire	1,000	2.7	0.1	4,400	17,000
Workshop Parking	111	luminaire	1,000	2.8	0.2	5,000	14,000
Street Lighting	111	luminaire	3,004	1.7	0.1	6,400	17,000

MULTI-USE FIELD  
124 points at z=3, sp 30ft by 30ft  
HORIZONTAL FOOTCANDLES  
Average 91  
Maximum 55  
Minimum 46  
Avg/Min 1.12  
Max/Min 1.20

MULTI-USE FIELD SPILL  
579 points at z=3, sp 30ft by 30ft  
HORIZONTAL FOOTCANDLES  
Average 1.6  
Maximum 24.1  
Minimum .2

**SITE PHOTOMETRIC PLAN**  
SCALE: 1" = 50'



REFERENCE DRAWINGS	NO.	DATE	DESCRIPTION	BY
	1	2017.06.03	FDP SUBMITTAL #1	JA
	2	2017.07.28	FDP SUBMITTAL #2	JA
	3	2017.08.16	FDP SUBMITTAL #3	JA

No.	DATE	DESCRIPTION	BY
		REVISIONS	

**COMPUTER FILE MANAGEMENT**  
FILE NAME: R:\16.854.001 (Superior Town Parks)\Dwg\FDP - PARKS ONLY 2ND SUBMITTAL\STCP\_FDP1\_LTS-LIGHTING\_2017-08-07.dwg  
CDS FILE:  
PLOT DATE: 8/8/2017 9:24 AM  
THIS DRAWING IS CURRENT AS OF PLOT DATE AND MAY BE SUBJECT TO CHANGE.

SEAL  
DESIGNED BY: [ ]  
DRAWN BY: [ ]  
CHECKED BY: [ ]  
SCALE: 1"=50'  
DATE ISSUED: 08/16/17  
SHEET: 19 OF 20

**SUPERIOR TOWN CENTER FDP 1,  
PHASE 6 FOR PARKS 1 & 2**  
TOWN OF SUPERIOR  
COLORADO



**LIGHTING PHOTOMETRICS**  
FOR AND ON BEHALF OF  
MATRIX DESIGN GROUP, INC.  
PROJECT No. 16.854.001  
DRAWING No. LT-1

