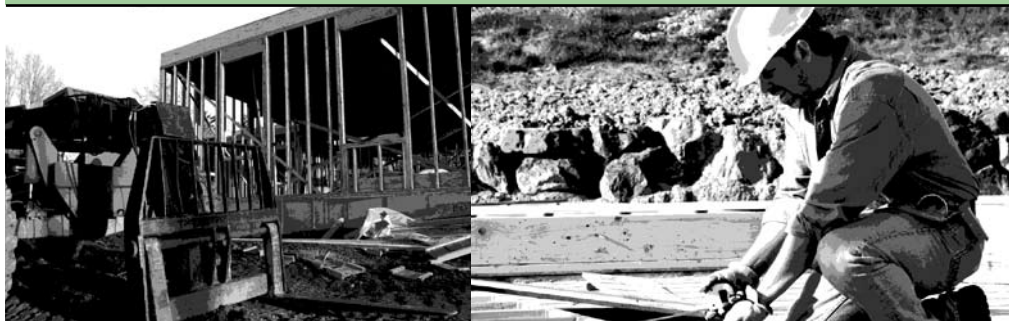


4 STEPS TO ENSURING A SUCCESSFUL CONSTRUCTION WASTE RECYCLING PROGRAM

- 1 Many construction waste materials are reusable and recyclable. Save, donate, reuse, or recycle materials from the job-site whenever possible.
- 2 Learn about the city of Boulder and Boulder County or other local government green building programs. These programs may have requirements or options to reuse, donate or recycle C & D material.
- 3 Ask for job-site recycling options from your waste hauler or contract with a construction waste recycling company. Options include setting up either separate or mixed dumpsters for recyclable materials such as clean wood waste, cardboard, metal and other materials to facilitate recycling efforts. Diverting materials from the landfill can reduce disposal costs.
- 4 Educating site employees and subcontractors is crucial to the success of your construction recycling program. Proper job-site education and signage (bilingual if necessary) for containers are essential.



NON-PROFITS ACCEPTING BUILDING MATERIALS*

Habitat for Humanity
455 Weaver Park Rd, Longmont, CO 80501
303-776-3334 • www.stvrainhfh.org

ReSource
2665 N. 63rd St, Boulder, CO 80301
303-419-5418 • www.ReSourceYard.org

The ReUse People of Colorado
10500 Isabelle Rd, Lafayette, CO 80026
303-666-8094 • www.thereusepeople.org

* This is not an exhaustive list of providers, other options may be available.

CONSTRUCTION WASTE RECYCLING HAULERS*

Haul Away Recycling, Inc
303-931-7398 • www.haulawayrecycling.com

Waste-Not Recycling
970-669-9912 • www.waste-not.com

Western Disposal
303-444-2037 • www.westerndisposal.com

For answers to all of your recycling questions...

Call the Recycle Boulder Hotline at **303-441-4234** or visit Boulder County at: www.bouldercountycycles.net or the city of Boulder at: www.bouldergreenpoints.com

Deconstruction consists of dismantling a building carefully taking it apart, salvaging reusable building materials for sale, donation or reuse, and recycling as much additional material as possible. Reuse and recycling rates up to 95% can be achieved. This process is more labor intensive than demolition, however it:

- Often costs less through reduced waste disposal fees and tax breaks from the donation of materials to a non-profit.
- Prevents precious building materials from going to the landfill.
- Conserves resources and reduces the environmental impact of producing new building materials.
- Produces affordable building materials and jobs for the community.
- Can provide valuable materials for the new construction project.
- Keeps historical materials in the community.

DECONSTRUCTION INSTEAD OF DEMOLITION

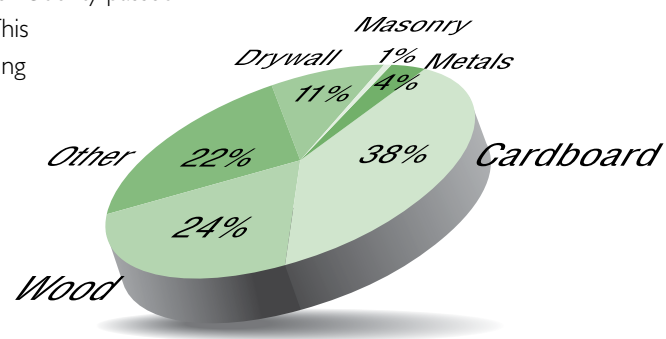


The city of Boulder and Boulder County endorse deconstruction over demolition. Please take note of the green building program in the jurisdiction you are doing work. Inquire about requirements or awards for actively pursuing deconstruction over demolition on a residential or commercial building project. Incentives may also be available for deconstruction projects.

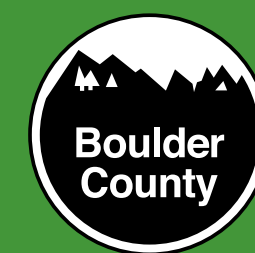
Full service deconstruction contractors can remove an entire building including the foundation and deliver reusable materials to a local non-profit for tax-deduction purposes. The local non-profits work closely with the deconstruction contractors to produce accurate documentation of the donated material and assist you through the process. Start by contacting the reuse building materials facility or non-profit to get more information on the deconstruction process.

WASTE REDUCTION

Both the city of Boulder and Boulder County passed Zero Waste Resolutions in 2006. This means that our goals focus on reusing and recycling as much material generated in our community as possible, opposed to sending it to the landfill. Construction and demolition (C & D) waste contributes significantly to the waste stream.



CONSTRUCTION & DECONSTRUCTION WASTE, REUSE & RECYCLING GUIDE



CONSTRUCTION & DECONSTRUCTION WASTE REUSE & RECYCLING GUIDE

MATERIAL	COMPANY	PHONE / LOCATION	ACCEPT	PICK-UP	SELL	NOTES
APPLIANCES	All Recycling, Inc. • www.allrecyclinginc.com	(303) 922-7722 • 1775 W. Wesley Ave, Englewood	X			Must remove freon from appliances before recycling.
	Boulder County Recycling Center • www.bouldercountyrecycles.net	(720) 564-2220 • 1901 63rd St. (north of Arapahoe), Boulder	X			Accepts metal appliances not containing freon or CFC's.
	Columbine Appliances • www.columbineappliance.com	(303) 443-7211 • 1780 55th Street, Boulder	X			Accepts air conditioners. Certified to remove CFC's. Sells reconditioned appliances.
	Habitat For Humanity • www.stvrainfhf.org	(303) 776-3334 • 455 Weaver Park Road, Longmont	X			Accepts working appliances less than 10 years old.
	Rocky Mountain Recycling • www.mountainrecycling.com	(303) 288-6868 • 6510 Brighton Blvd, Commerce City	X			Accepts all major and most small (non-plastic) appliances. Refrigerated units must be drained and tagged before delivery.
	Unwanted Appliances • www.unwanted.com	(888) 886-9268 • 2300 West 2nd Avenue, Unit #3, Denver	X	X		Provides pick-up of all major appliances. Certified to remove CFC's. Fees may apply, call for details.
	Warren Used Appliance • www.warrenappliancecellc.com	(303) 772-5039 • 337 Main St., Longmont	X	X		Accepts working and non-working appliances. CFC removal. Fees may apply, call for details.
ASPHALT, CONCRETE	Allied Recycled Aggregates • www.alliedrecycle.com	(303) 289-3366 • 7901 US Highway 85 P.O. Box 556, Commerce City	X			Wants clean asphalt. Charge for concrete and asphalt recycling.
	Oxford Recycling • www.oxfordrecycling.com	(303) 762-1160 • 2400 W Oxford Avenue, Englewood	X	X	X	Accepts concrete, asphalt, mixed loads, rebar, steel. Provides roll-off containers. Fees may apply, call for details.
	Recycled Materials Company, Inc • www.rmci-usa.com	(303) 423-2736 • 5500 Fenton St., Arvada	X	X	X	No wood, trash, hazardous waste, or excessive amounts of dirt (<10%). Accepts non-reinforced concrete (mesh or rebar). Heavily reinforced concrete loads subject to higher fees. Limited pickup, fees may apply, call for details.
	Aggregate • www.aggregate.com	(303) 664-6254 • 23 S. Sunset St., Longmont	X			Fees may apply, call for details.
	Construction Recycling, Inc.	(303) 440-8777 • 3220 Weld County Road 8, Erie	X	X		Accepts wood, pallets, concrete, asphalt, land debris, and yard waste.
BRICK, BLOCK, MASONRY, TILE, CINDER BLOCK	Hillen Brick • www.hillencorp.com	(303) 287-2664 • 7600 Dahlia St., Commerce City	X	X	X	Offers demolition service. Resells brick, stone, and other building material.
	Mendoza Used Brick Inc • www.mendozaservices.com	(303) 427-1202 • 701 W 64th Ave., Denver	X	X	X	Sells items as is. Offers demolition - residential and commercial.
	Custom Tile Roofing • www.customtileroofing.com	(303) 761-3831 • 4560 Columbine St., Denver	X	X	X	Commercial and residential installation and tear-off of all tile roofs: clay, tile, slate, and concrete. Salvage, purchase, and resale of tile roofing. Fees may apply, call for details.
BUILDING MATERIALS	Bud's Warehouse • www.budwarehouse.org	(303) 296-3990 • 4455 E 46th Ave., Denver	X	X		Accepts items like cabinets, appliances, tile, carpet, hardware, light fixtures, doors, windows, bath tubs, sinks, and many other building materials. The store is also located in a disadvantaged area of Denver providing low cost materials to those who need them the most.
	ReSource • www.resourceyard.org	(303) 419-5418 • 2665 N. 63rd St., Boulder	X	X	X	Accepts tax-deductible donations of many materials and resells at discount prices. No appliances please. Call for approval of materials. Fees may apply, call for details.
	Brothers Redevelopment • www.briathome.org	(303) 202-6340 • 2250 Eaton St. Suite B, Edgewater	X	X		Accepts donations of good quality used construction materials. Accepts 2x4, 2x6, fir or redwood boards needed for wheelchair ramps.
	Oxford Recycling • www.oxfordrecycling.com	(303) 762-1160 • 2400 W Oxford Avenue, Englewood	X	X	X	Accepts lumber and wood but no hardware. Provides roll-off containers. May pay for materials. Fees may apply, call for details.
	Habitat For Humanity • www.stvrainfhf.org	(303) 776-3334 • 455 Weaver Park Road, Longmont	X			
	Construction Junction • www.constructionjunction.com	(970) 963-1016 • 695 Buggy Circle, Carbondale	X	X		Dimensional lumber, doors, windows, sinks, cabinets, tile, carpet and furniture, plumbing, light fixtures. Consignment sales.
	Queen City Architectural Salvage • www.architectural-artifacts.com	(303) 296-0925 • 4750 Brighton Blvd., Denver	X	X	X	Doors, windows, stained glass, knobs, fixtures, etc... Focus on antique material.
CARDBOARD	Boulder County Recycling Center/ Eco-cycle	(303) 444-6634 • 1901 63rd between Arapahoe and Valmont, Boulder (303) 772-7300 • 140 Martin St., Longmont	X			Accepts materials free of charge at Drop-Off Center.
	El Jebel Shrine • www.eljebelshrine.org/recycle.htm	Website of multiple bin locations	X			Accepts materials free of charge at Drop-Off Center.
	Western Disposal • www.westerndisposal.com	(303) 444-5794 • 5880 Butte Mill Road, Boulder	X			Clean wood waste drop-off program subsidized by the city of Boulder.
	Allied Waste Services • www.disposal.com	(303) 287-8043 • 5075 East 74th Ave, Commerce City	X	X		
CARPET/CARPET PAD	ReSource • www.resourceyard.org	(303) 419-5418 • 2665 N. 63rd St., Boulder	X	X	X	Accepting carpet for city of Boulder residents from April to September 2007 and potentially thereafter. Call for details. Fees may apply, call for details.
	Mountain Trade Supply	(303) 294-0226 • 4840 Broadway, Denver	X			Pays \$.08/lb for used carpet pad and foam cushions. May pay for material, call for details.
	Waste Management	(303) 289-7500 • 6091 Brighton Blvd., Commerce City	X			Accepts carpet pad, foam cushions.
CLEAN WOOD WASTE (upainted, untreated)	The Richlawn Co. • www.therichlawncompany.com	Multiple store locations	X			
	Consolidated Construction Services, LLC.	303-329-6301 • 5245 E. 69th Ave, commerce City	X	X		Roll-off Service, serving the homebuilding community. Fees apply, call for details.
	Organic Supply • www.richlawn.com	(303) 659-6003 • 15121 Weld Cty. Rd. 32, Platteville	X			Mulch from recycled wood products.
	A-1 Organics • www.a1organics.com	(303) 384-9232 • 6569 Hwy. 93, Golden	X			No treated wood. Fees may apply, call for details.
	Western Disposal • www.westerndisposal.com	(303) 444-5794 • 5880 Butte Mill Road, Boulder	X			Clean wood waste Drop-off program subsidized by the city of Boulder.
	Frontier Waste Transfer	(303) 293-3333 • 5350 Washington St., Denver	X			Clean wood (no paint, stain, or treatment) Nails allowed.
LANDSCAPE MATERIAL	Green Giant Recycling • www.greengiantrecycling.lbu.com	(303) 654-9857 • 644 North 7th Avenue, Unit 5, Brighton	X			Clean wood recycling.
	Oxford Recycling • www.oxfordrecycling.com	(303) 762-1160 • 2400 W Oxford Avenue, Englewood	X	X	X	Accepts branches (no roots or stumps), tree trunks and logs (minimum of 12 inches). Provides roll-off containers. Fees may apply, call for details.
	Lid Landscapes • www.lidlandscapes.com	(303) 440-7833 • 3131 North 75th St. Suite 100, Boulder	X			Debris removal: tree limbs, leaf litter or other debris. Call for details.
	A-1 Organics • www.a1organics.com	(303) 384-9232 • 6569 Hwy. 93, Golden	X			No treated wood. Accepts sod, grass, brush, logs. Fees may apply, call for details.
	Jensen Sales Co. • www.jensensalescompany.com	(303) 791-4250 • 8980 S. Sante Fe Dr., Littleton	X	X	X	Accepts (drop-off) soil, sod, grass, tree branches, unpainted wood scraps, and sawdust. Drop off fee \$4-5/cubic yard.
PLUMBING, HEATING	Western Disposal • www.westerndisposal.com	(303) 444-5794 • 5880 Butte Mill Road, Boulder	X		X	All yard waste material for drop-off, free for residents and a cost for businesses, but still subsidized by the city of Boulder. Small fee for county residents.
	Bud's Warehouse • www.budwarehouse.org	(303) 296-3990 • 4455 E. 46th Ave., Denver	X	X		The organization accepts items like cabinets, appliances, tile, carpet, hardware, light fixtures, doors, windows, bath tubs, sinks, and many other building materials. The store is also located in a disadvantaged area of Denver providing low cost materials to those who need them the most.
	Habitat For Humanity • www.stvrainfhf.org	(303) 776-3334 • 455 Weaver Park Road, Longmont	X			Accepts used appliances still under warranty.
SCRAP METAL	ReSource • www.resourceyard.org	(303) 419-5418 • 2665 N. 63rd St., Boulder	X	X	X	Accepts tax-deductible donations of many materials and resells at discount prices. No appliances please. Call for approval of materials. Fees may apply, call for details.
	Benson & Benson Metals • www.bensonmetal.com	(303) 650-1604 • 6885 Lowell Blvd., Denver	X	X		Pays for non-ferrous metals. No steel.
	All Recycling, Inc. • www.allrecyclinginc.com	(303) 922-7722 • 1775 W. Wesley Ave., Englewood	X	X		Pays for ferrous and non-ferrous metal.
	Metal Management, Inc • www.mtlm.com	(303) 295-2911 • 5601 York St., Denver	X			Accepts ferrous material. Capable of shredding, shearing, torching.
	Western Aluminum Recycling	(303) 447-0252 • 3280 Valmont Rd., Unit C, Boulder	X	X		No ferrous metals. May pay for material, call for details.
	Boulder County Recycling Center • www.bouldercountyrecycles.net	(720) 564-2220 • 1901 63rd St. (north of Arapahoe), Boulder	X			Accepts materials free of charge at Drop-Off Center.
	Rocky Mountain Recycling • www.mountainrecycling.com	(303) 288-6868 • 6510 Brighton Blvd., Commerce City	X			Public drop-off recycling of all scrap metals.
	Action Recycling Center • www.actionrecyclingcenter.com	(303) 424-1600 • 7610 W. 42nd AVE, Wheat Ridge	X			Aluminum, copper, brass and other metals.
	Atlas Metal & Iron Corporation • www.atlasmetal.com	(303) 623-0143 • 1401 Umatilla Street, Denver	X			All types of metal.
	C & M Iron & Metal Company	(303) 781-6779 • 2390 W Hampden Ave., Denver	X			All types of metal.
	G & G Surplus Buyers	(303) 944-6291 • 10148 Uravan Street, Commerce City	X			Non-ferrous metals (copper, brass, aluminum.).
	Iron & Metals, Inc. • www.ironandmetals.com	(303) 292-5555 • 5555 Franklin Street, Denver	X			All types of metal.
	Recycling Connections • www.recyclingconnections.com	(303) 333-6363 • 9985 E. 104th Ave #B, Henderson	X			Non-ferrous metals and electronics.
	Western Disposal • www.westerndisposal.com	(303) 444-5794 • 5880 Butte Mill Road, Boulder	X			All types of metal (drop-off only).
Western Metal Recycling • www.wmrecycling.com	(303) 761-2681 • 2100 W Oxford Avenue, Englewood	X			All types of metal.	

* Boulder County and the city of Boulder do not endorse any of the products or services referenced in this brochure which are for informational purposes only. ** Please call the company or service provider for current material and practices acceptance guidelines.