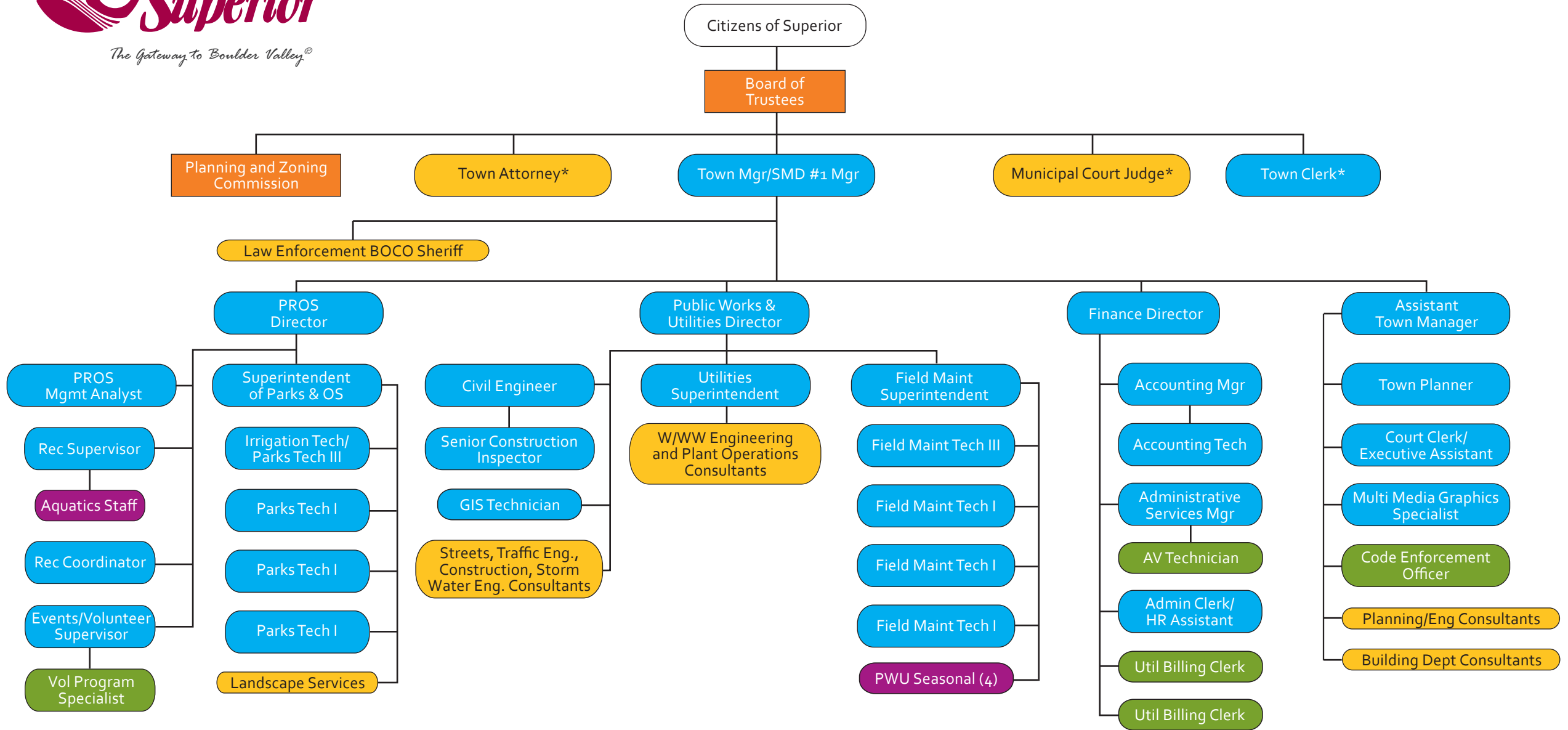




TOWN OF SUPERIOR, COLORADO  
Organizational Chart

Revised 3/30/2017



**KEY:**    ● Full-Time Positions    ■ Boards & Commissions    ■ Contracted Positions    ■ Part-Time Seasonal    ■ Part-Time Positions

\*While the Town Board of Trustees, or SMD #1 Board of Directors, appoints these positions, the Town Manager/SMD #1 Manager directs the daily operations of each position.